



FOR LEASE OFFICE SPACE AVAILABLE

1984 Coffman Road – Newark, OH 43055

Property Description

- 14,000 SF AVAILABLE
- MULTIPLE INDIVIDUAL OFFICES
- SPRINKLER SYSTEM – DRY
- 9' ACCOUSTIC CEILINGS
- CONVENIENT WEST-SIDE LOCATION
- LARGE AREAS FOR CUBICLES
- WIRED FOR NETWORK
- FOUR TUBE FLOURESCENT LIGHTS
- LANDLORD PAYS ALL UTILITIES, TAXES AND INSURANCE
- IMMEDIATELY AVAILABLE
- LEASE RATE \$11.25 PSF MG



contact information

Steve Layman
tel 740 349 7844 ext. 22
slayman@ohioequities.com

Dave Anderson
tel 740 349 7844 ext. 23
danderson@ohioequities.com

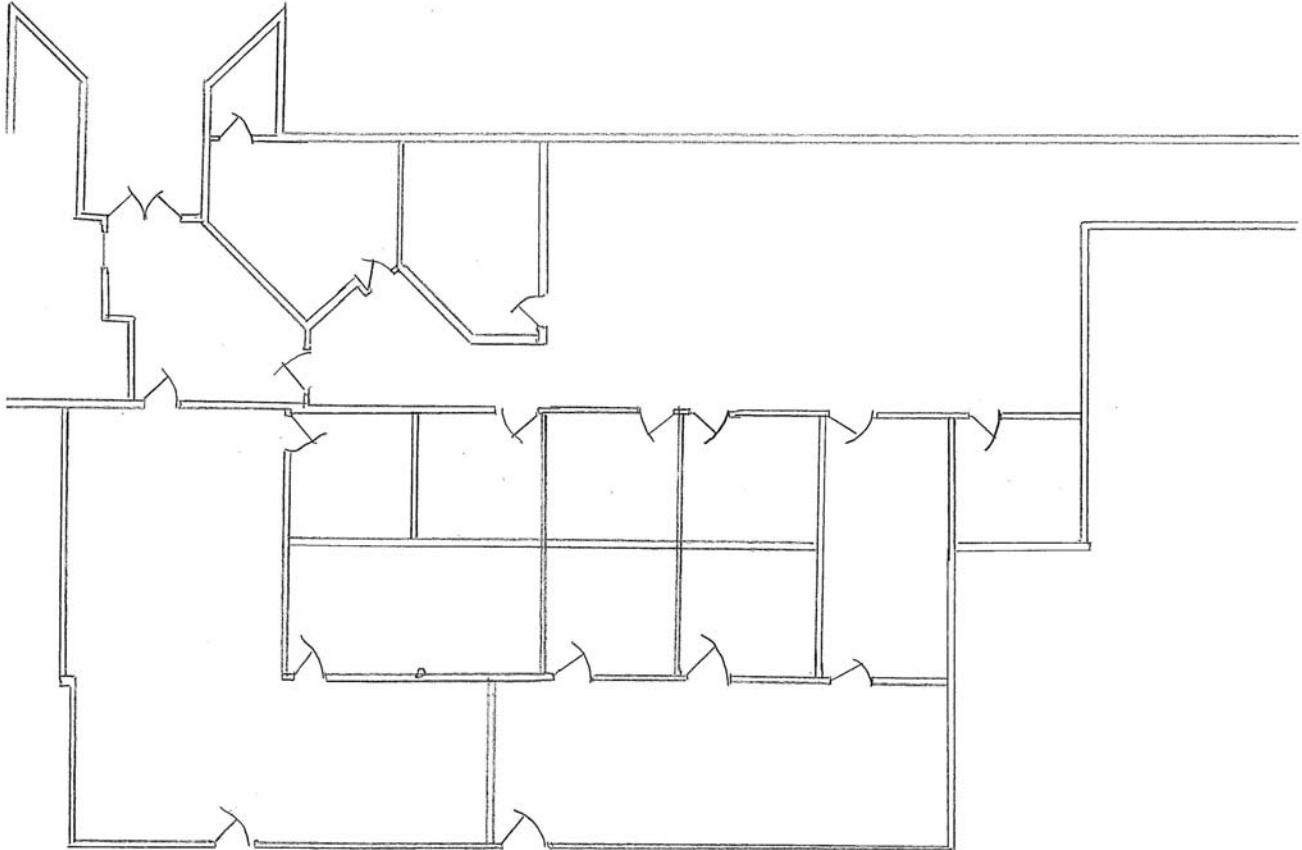
NAI Ohio Equities
Anderson Layman
Commercial Real Estate Services, Worldwide.

The information contained herein has been given to us by the owner of the property or other sources we deem reliable. We have no reason to doubt its accuracy, but we do not guarantee it. All information should be verified prior to purchase or lease.

Main Office
605 S Front St Suite 200
Columbus, Ohio 43215
tel 614 224 2400
fax 614 224 5436
www.ohioequities.com

FLOORPLAN

1984 Coffman Road – Newark, OH 43055



contact information

Steve Layman
tel 740 349 7844 ext. 22
slayman@ohioequities.com

Dave Anderson
tel 740 349 7844 ext. 23
danderson@ohioequities.com

NAI Ohio Equities
Anderson Layman
Commercial Real Estate Services, Worldwide.

The information contained herein has been given to us by the owner of the property or other sources we deem reliable. We have no reason to doubt its accuracy, but we do not guarantee it. All information should be verified prior to purchase or lease.

