

FOR SALE OR LEASE

FLEX SPACE AVAILABLE

3341 Centerpoint Drive – Grove City, OH 43123



PROPERTY DESCRIPTION

- 48,000 SF BUILDING
- 6,000 SF AVAILABLE (60' X 100')
- UNITS C & D – 3,000 SF EACH
AVAILABLE = 6,000 SF COMBINED
- 10% OFFICE AND RECEPTION AREA
- 2 ADA RESTROOMS

UNITS C & D – 3,000 SF EACH

- ONE (1) 12' X 12' DRIVE-IN DOOR
- ONE (1) 4' SEMI HEIGHT DOCK DOOR
- 19' TO 24' CLEAR HEIGHT
- DURABLE PRE-CAST CONCRETE CONSTRUCTION
- DIRECT RAMP ACCESS TO I-270
- 3-PHASE ELECTRIC
- EXTERIOR SIGNAGE AVAILABLE FACING I-270
- UNIT C IS AVAILABLE FOR LEASE

ASKING PRICE \$214,500/UNIT

LEASE RATE \$8.00 PSF MG

contact information

Ryan McGreevy

tel 614 629 5282

rmcgreevy@ohioequities.com

Main Office

605 S Front St Suite 200

Columbus, Ohio 43215

tel 614 224 2400

fax 614 224 5436

www.ohioequities.com

NAI Ohio Equities REALTORS®
Commercial Real Estate Services, Worldwide.

The information contained herein has been given to us by the owner of the property or other sources we deem reliable. We have no reason to doubt its accuracy, but we do not guarantee it. All information should be verified prior to purchase or lease.

PROPERTY PHOTOGRAPHS

3341 Centerpoint Drive – Grove City, OH 43123

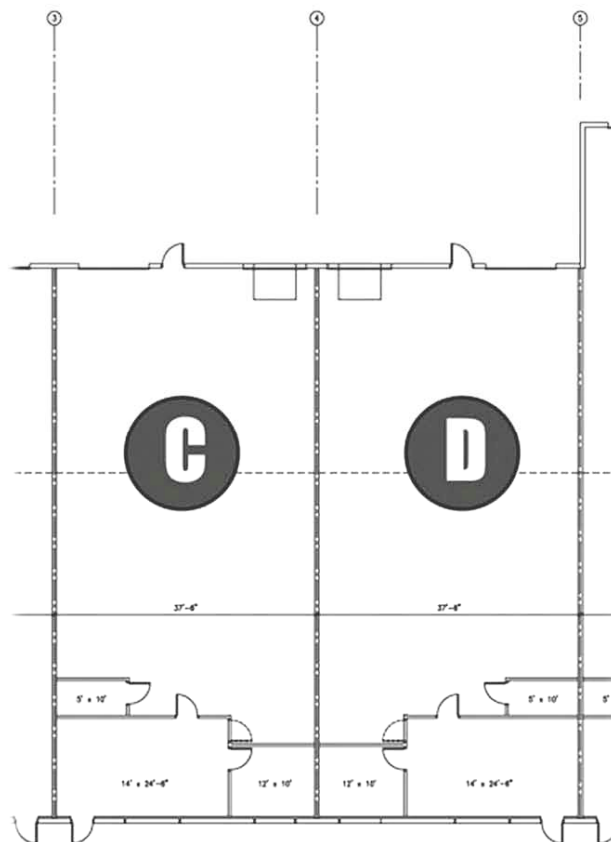
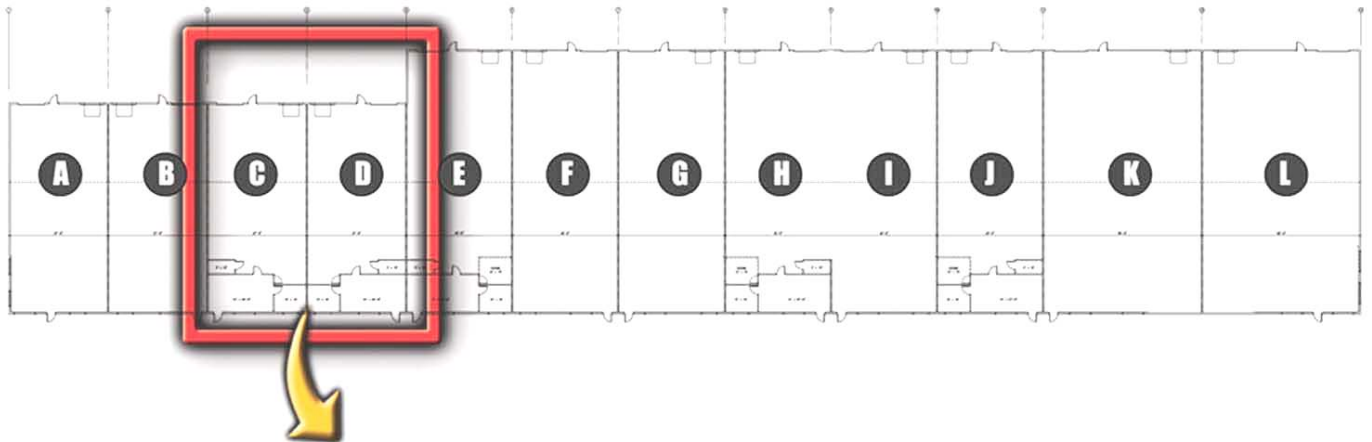


contact information

Ryan McGreevy
tel 614 629 5282
rmcgreevy@ohioequities.com

FLOORPLAN

3341 Centerpoint Drive – Grove City, OH 43123

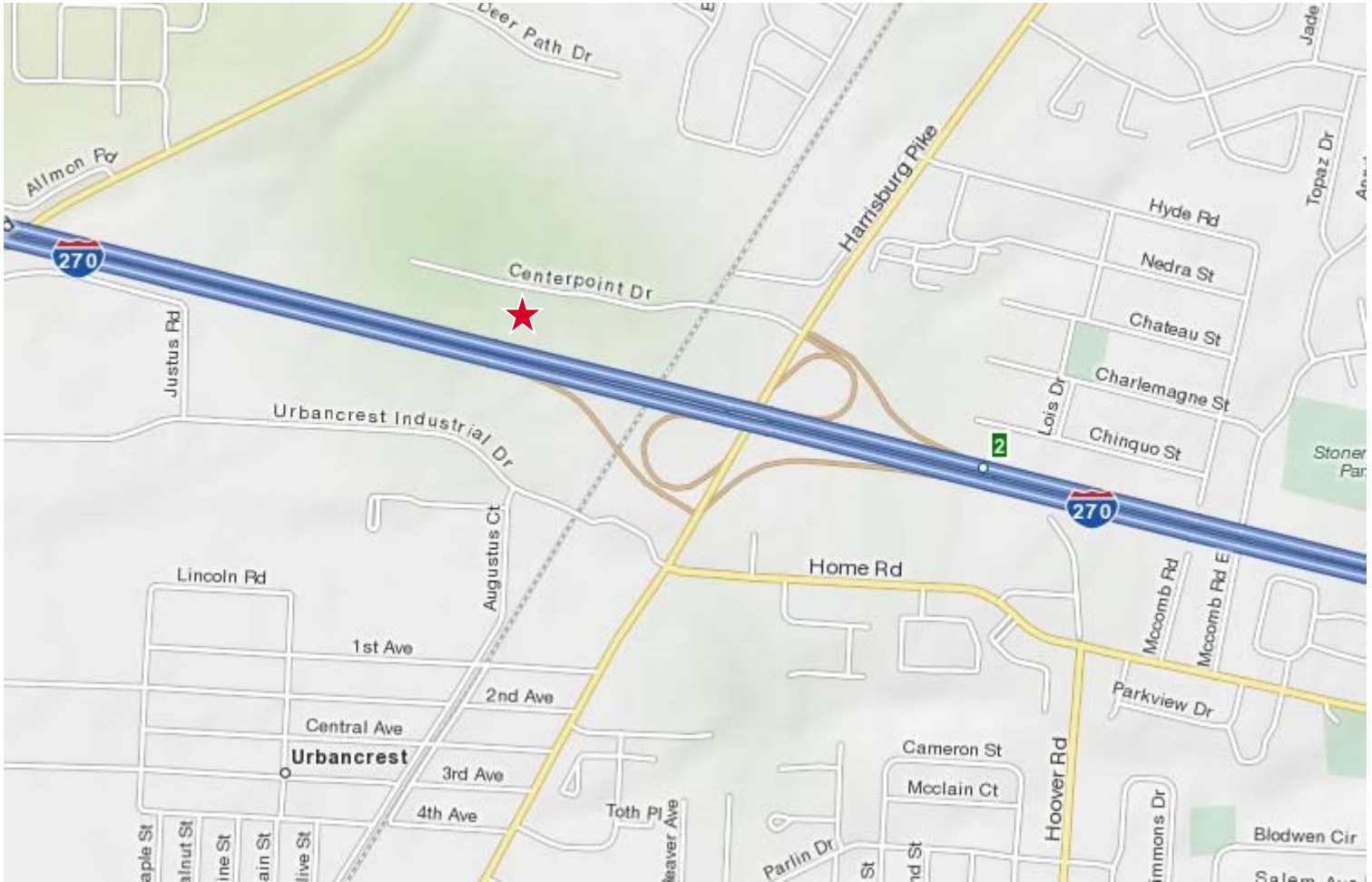


contact information

Ryan McGreevy
tel 614 629 5282
rmcgreevy@ohioequities.com

LOCATION MAP

3341 Centerpoint Drive – Grove City, OH 43123

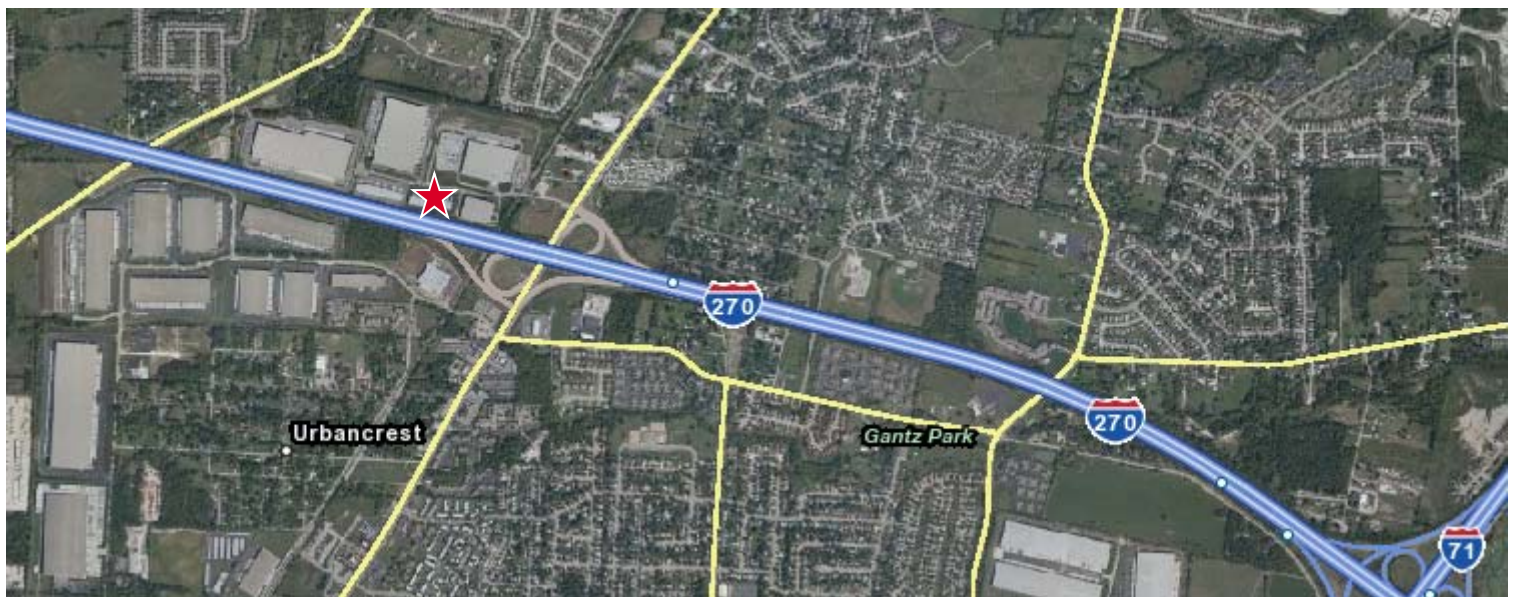


contact information

Ryan McGreevy
tel 614 629 5282
rmcgreevy@ohioequities.com

AERIAL IMAGERY

3341 Centerpoint Drive – Grove City, OH 43123



contact information