



FOR SALE OR LEASE GERMAN VILLAGE OFFICE SPACE

39 E. Whittier Street – Columbus, OH 43206



Property Description

- 2,378 SF BUILDING AVAILABLE
- VERY NICE PROFESSIONAL OFFICE BUILDING IN GERMAN VILLAGE
- FOUR GENEROUSLY SIZED OFFICES, LARGE CONFERENCE ROOM, RECEPTION AREA, KITCHENETTE AND STORAGE SPACE
- OFF-STREET PARKING FOR 3 CARS IN ADDITION TO FREE ON-STREET PARKING
- CLOSE PROXIMITY TO RESTAURANTS, DOWNTOWN, BUSLINE AND MANY AMENITIES
- RECENTLY REMODELED

SALE PRICE \$299,000

LEASE RATE \$15.00 PSF + UTILITIES

contact information

Peter Merkle

tel 614 629 5240

pmerkle@ohioequities.com

Main Office

605 S Front St Suite 200

Columbus, Ohio 43215

tel 614 224 2400

fax 614 224 5436

www.ohioequities.com

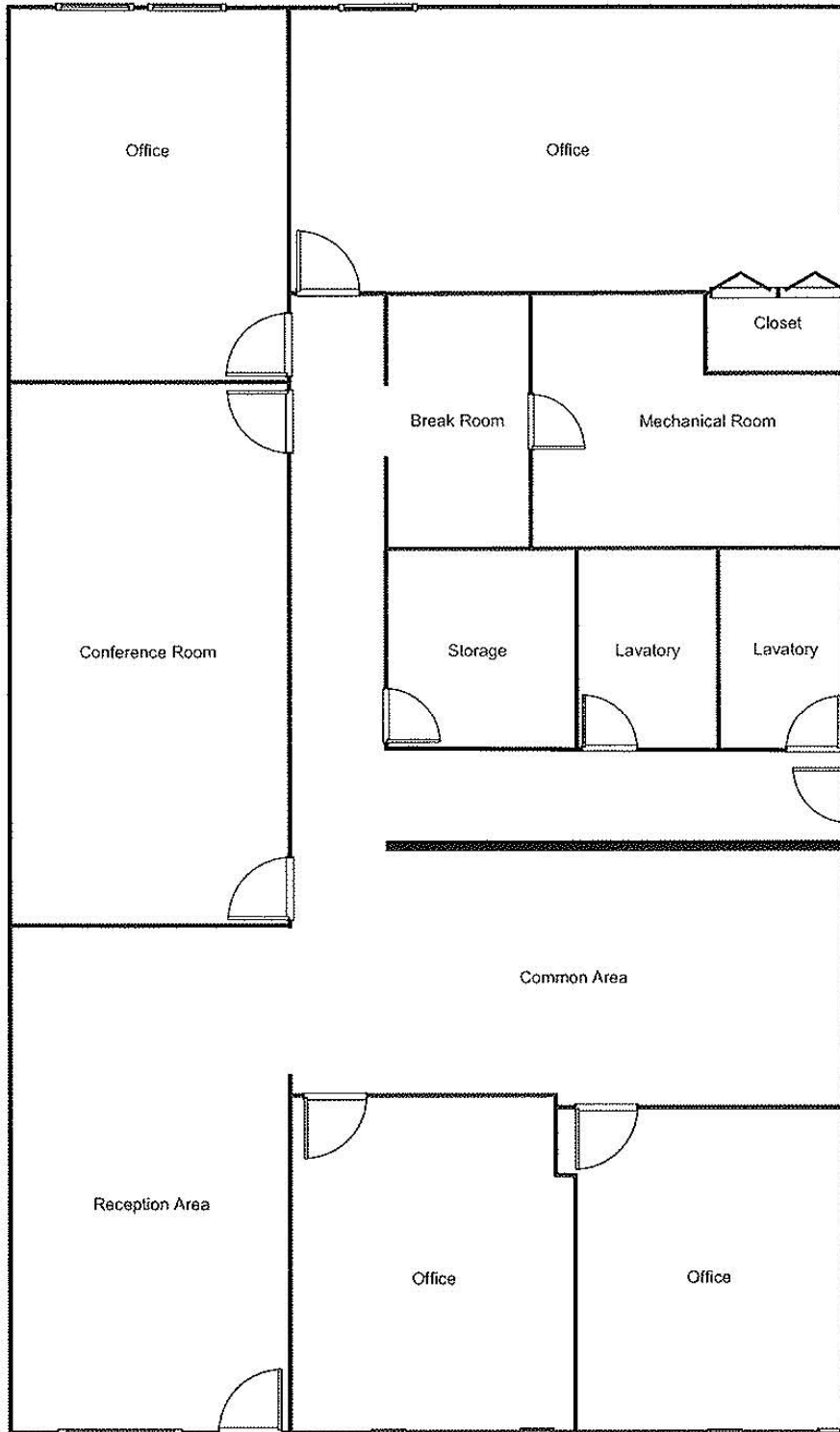
NAI Ohio Equities[®] REALTORS[®]

Commercial Real Estate Services, Worldwide.

The information contained herein has been given to us by the owner of the property or other sources we deem reliable. We have no reason to doubt its accuracy, but we do not guarantee it. All information should be verified prior to purchase or lease.

FLOORPLAN

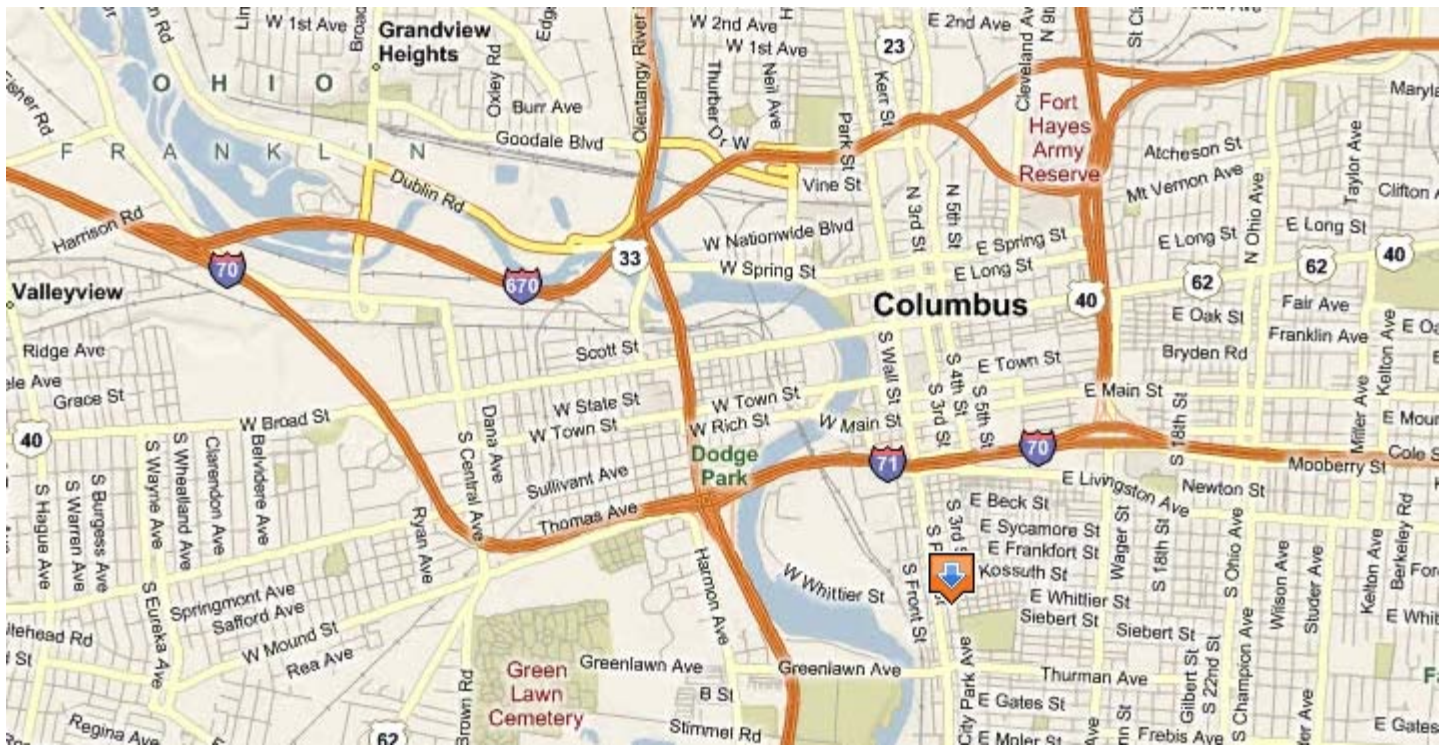
39 E. Whittier Street – Columbus, OH 43206



contact information

AERIAL IMAGERY & LOCATION MAPS

39 E. Whittier Street – Columbus, OH 43206



[contact information](#)

Peter Merkle

tel 614 629 5240

pmerkle@ohioequities.com

NAI Ohio Equities[®] REALTORS[®]

Commercial Real Estate Services, Worldwide.