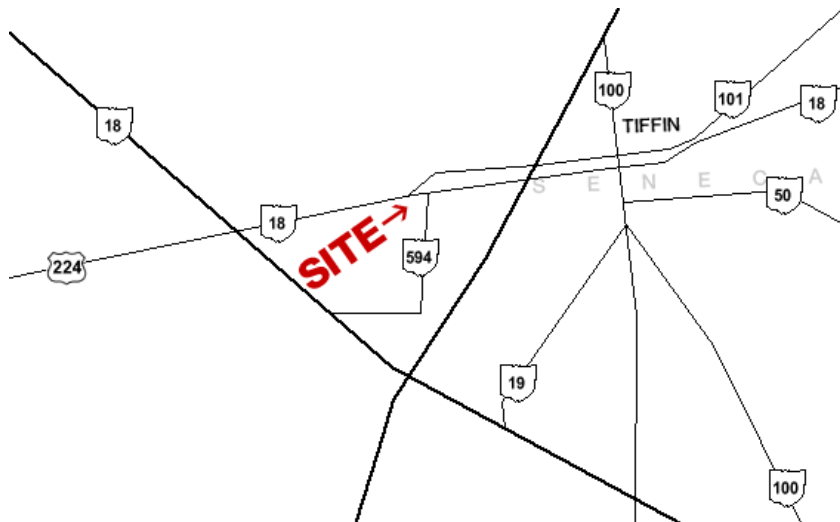
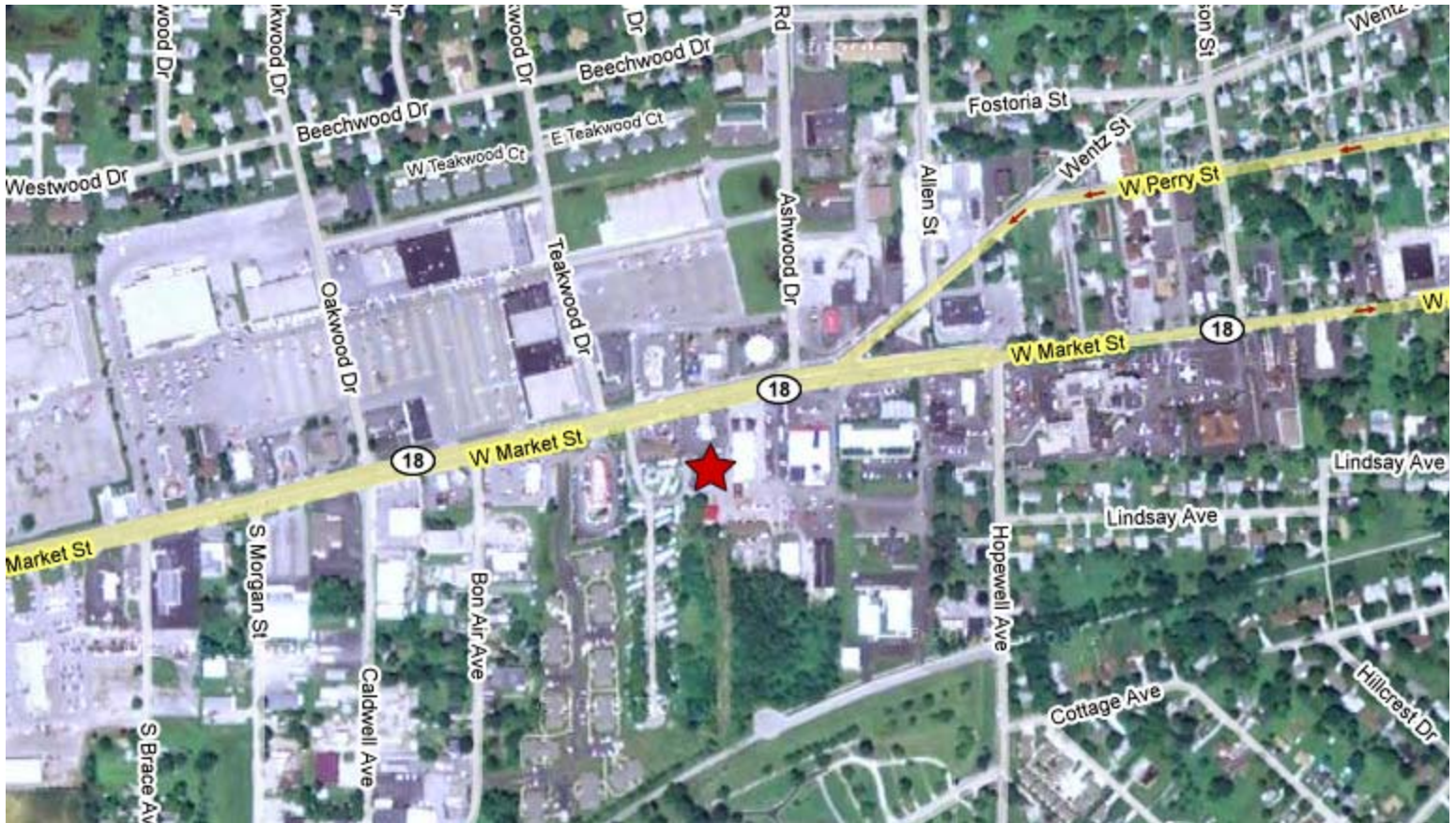


# COMMERCIAL LAND AVAILABLE FOR SALE

1630 W. Market Street – Tiffin, OH 44883



## PROPERTY DESCRIPTION

- 1.407 ACRES
- 123' FRONTAGE
- LOCATED IN SENECA COUNTY
- TRAFFIC COUNTS 22,274 VEHICLES PER DAY

LISTING PRICE NEGOTIABLE

### contact information

Phil Bird  
tel 614 629 5296  
pbird@ohioequities.com

Anthony Maronitis  
tel 614 629 5270  
amaronitis@ohioequities.com

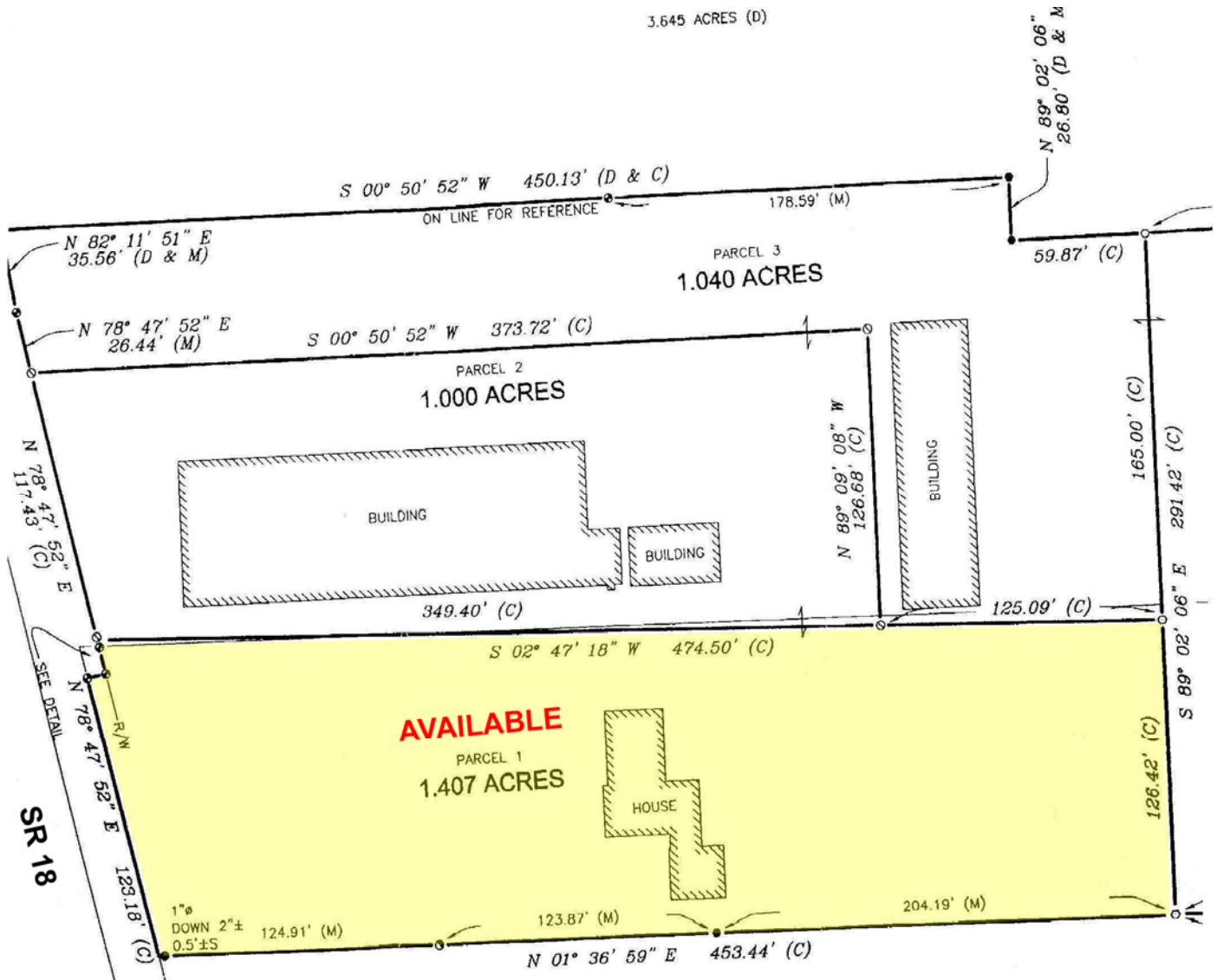
**NAI** Ohio Equities REALTORS®

Commercial Real Estate Services, Worldwide.

The information contained herein has been given to us by the owner of the property or other sources we deem reliable. We have no reason to doubt its accuracy, but we do not guarantee it. All information should be verified prior to purchase or lease.

# SITEPLAN

1630 W. Market Street – Tiffin, OH 44883



## contact information

Phil Bird  
tel 614 629 5296  
pbird@ohioequities.com

Anthony Maronitis  
tel 614 629 5270  
amaronitis@ohioequities.com

**NAI** Ohio Equities REALTORS®

Commercial Real Estate Services, Worldwide.

The information contained herein has been given to us by the owner of the property or other sources we deem reliable. We have no reason to doubt its accuracy, but we do not guarantee it. All information should be verified prior to purchase or lease.

