

1994 - 2003 Average Daily Traffic

How to Read the Maps

The average daily traffic (ADT, 24-hour, non-directional seasonal adjusted traffic count) is at the approximate location at which the count was taken. The counts are coded so that the last digit reflects the year of the count.

Example: 22,002 reads 22,000 ADT in 2002.

Data Source

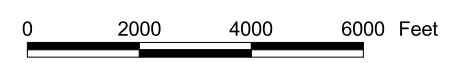
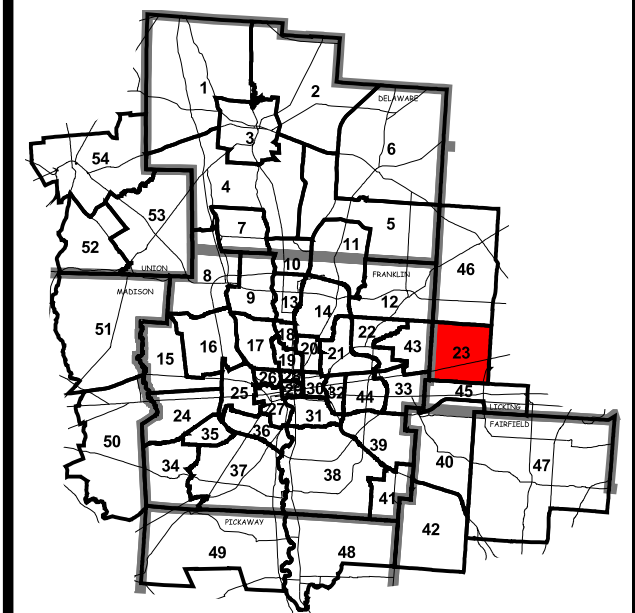
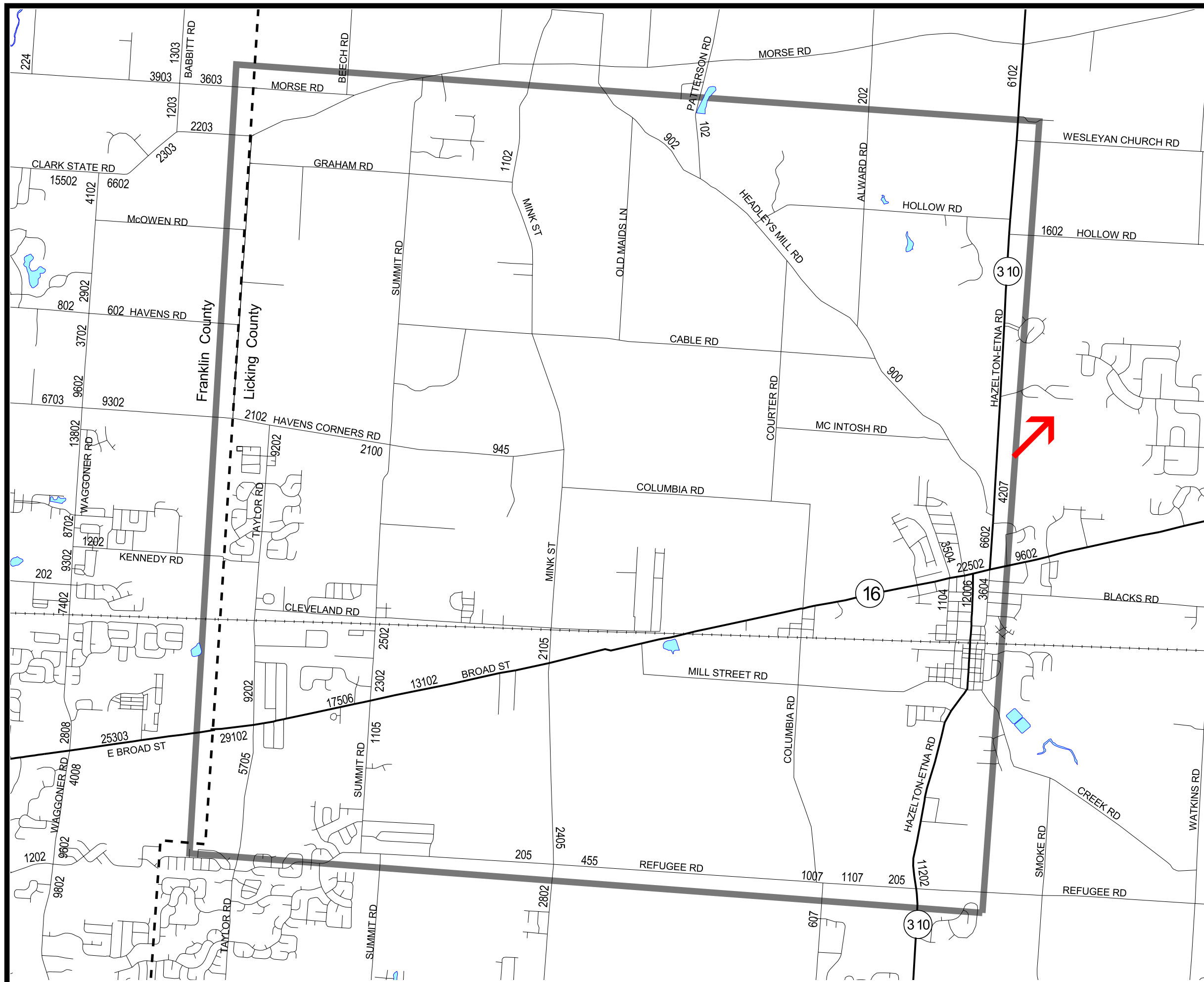
Traffic Counts reported on this map were collected from the following government agencies: ODOT, County Engineers, the City of Columbus and suburban communities, and their consultants. Counts are from 1994 - 2003 inclusively.

Funding Source

These maps were financed by appropriations from Delaware, Fairfield, Franklin and Licking counties, municipalities within these counties, and planning funds from agencies of the United States Department of Transportation and the Ohio Department of Transportation.

Base Mapping Source

The base mapping used was provided by ODOT and all the County Auditor offices.



Pataskala (23)