



RETAIL SPACE FOR LEASE

FREESTANDING RETAIL BUILDING

1898 Brice Road – Reynoldsburg, OH 43068



Property Description

- 1,700 SF AVAILABLE FOR LEASE
- NEXT TO SUBWAY
- 3,884 SF BUILDING
- VISIBILITY TO 30,000 CARS PER DAY
- 76,042 PEOPLE WITHIN A 3 MILE RADIUS
- BUILT IN 1978 – REMODELED IN 2007
- SITUATED ON 0.791 ACRES

LEASE RATE \$10.50 PSF NNN

contact information

Mike Simpson
tel 614 629 5236
msimpson@ohioequities.com

Main Office
605 S Front St Suite 200
Columbus, Ohio 43215
tel 614 224 2400
fax 614 224 5436
www.ohioequities.com

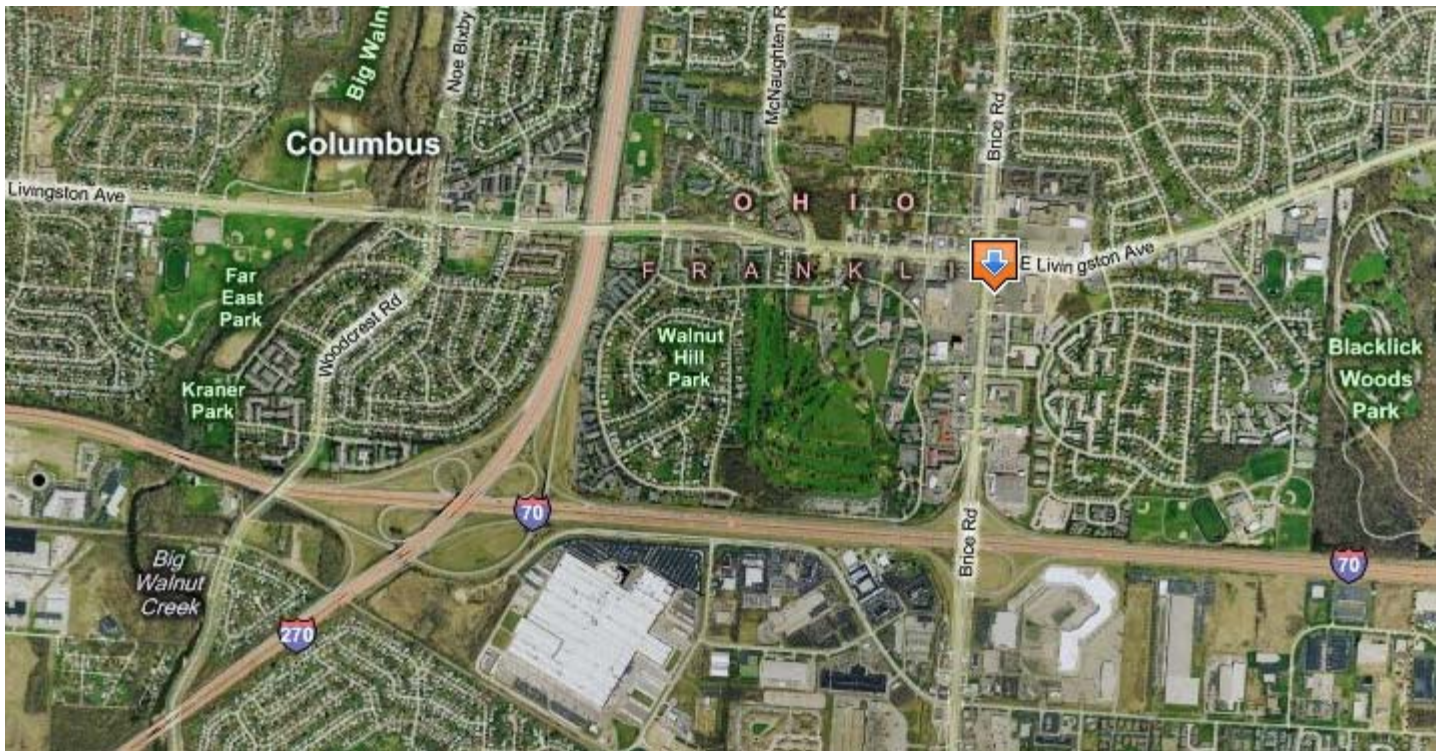
NAI Ohio Equities^{REALTORS®}

Commercial Real Estate Services, Worldwide.

The information contained herein has been given to us by the owner of the property or other sources we deem reliable. We have no reason to doubt its accuracy, but we do not guarantee it. All information should be verified prior to purchase or lease.

AERIAL IMAGERY

1898 Brice Road – Reynoldsburg, OH 43068



NAI Ohio Equities REALTORS®

Commercial Real Estate Services, Worldwide.

The information contained herein has been given to us by the owner of the property or other sources we deem reliable. We have no reason to doubt its accuracy, but we do not guarantee it. All information should be verified prior to purchase or lease.

[contact information](#)

Mike Simpson
tel 614 629 5236
msimpson@ohioequities.com

Date: 05/29/09

Current Geography Selection: (1 Selected) 3 mile radius: 1898 BRICE RD, REYNOLDSBURG, OH 43068 *

Lat: 39.941270 **Long:** -82.829798

County: Franklin County **Pop:** 1,099,047

Zip: 43068 **Pop:** 49,628

Demographic Detail Summary Report

Population Demographics

	1990		2000		2008		2013		Percent Change	
	Census		Census		Estimate		Projection		1990 to 2000	2008 to 2013
Total Population	76,042		89,875		96,327		99,098		18.2%	2.9%
Population Density (Pop/Sq Mi)	2,689.4		3,178.7		3,406.9		3,504.9		18.2%	2.9%
Total Households	30,667		37,493		40,117		41,099		22.3%	2.4%

Population by Gender:

	1990		2000		2008		2013		Percent Change	
	Census		Census		Estimate		Projection		1990 to 2000	2008 to 2013
Male	36,707	48.3%	43,098	48.0%	46,661	48.4%	48,301	48.7%	17.4%	3.5%
Female	39,335	51.7%	46,778	52.1%	49,666	51.6%	50,797	51.3%	18.9%	2.3%

Population by Race/Ethnicity

	1990		2000		2008		2013		Percent Change	
	Census		Census		Estimate		Projection		1990 to 2000	2008 to 2013
White	67,380	88.6%	65,298	72.7%	64,740	67.2%	64,463	65.1%	-3.1%	-0.4%
Black	7,117	9.4%	19,370	21.6%	25,485	26.5%	27,830	28.1%	172.1%	9.2%
American Indian or Alaska Native	178	0.2%	274	0.3%	131	0.1%	77	0.1%	53.8%	-41.1%
Asian or Pacific Islander	1,106	1.5%	1,888	2.1%	3,087	3.2%	3,956	4.0%	70.8%	28.2%
Some Other Race	255	0.3%	884	1.0%	824	0.9%	888	0.9%	246.0%	7.8%
Two or More Races			2,161	2.4%	2,060	2.1%	1,884	1.9%		-8.6%
Hispanic Ethnicity	758	1.0%	1,957	2.2%	3,825	4.0%	5,000	5.1%	158.2%	30.7%
Not Hispanic or Latino	75,285	99.0%	87,918	97.8%	92,502	96.0%	94,097	95.0%	16.8%	1.7%

Population by Age

	1990		2000		2008		2013		Percent Change	
	Census		Census		Estimate		Projection		1990 to 2000	2008 to 2013
0 to 4	5,617	7.4%	6,802	7.6%	7,729	8.0%	7,473	7.5%	21.1%	-3.3%
5 to 14	9,565	12.6%	12,855	14.3%	13,445	14.0%	14,136	14.3%	34.4%	5.1%
15 to 19	5,067	6.7%	5,597	6.2%	5,879	6.1%	5,751	5.8%	10.5%	-2.2%
20 to 24	6,971	9.2%	6,627	7.4%	6,508	6.8%	6,428	6.5%	-4.9%	-1.2%
25 to 34	15,815	20.8%	15,564	17.3%	15,172	15.8%	14,849	15.0%	-1.6%	-2.1%
35 to 44	12,081	15.9%	14,815	16.5%	14,730	15.3%	14,256	14.4%	22.6%	-3.2%

45 to 54	8,284	10.9%	11,612	12.9%	13,308	13.8%	13,570	13.7%	40.2%	2.0%
55 to 64	6,611	8.7%	7,285	8.1%	10,211	10.6%	11,796	11.9%	10.2%	15.5%
65 to 74	4,088	5.4%	5,212	5.8%	5,480	5.7%	6,811	6.9%	27.5%	24.3%
75 to 84	1,522	2.0%	2,815	3.1%	2,918	3.0%	3,048	3.1%	84.9%	4.5%
85+	418	0.6%	691	0.8%	957	1.0%	989	1.0%	65.2%	3.3%

Median Age:

Total Population	31.5		33.4		34.6		35.6		5.8%	2.9%
------------------	------	--	------	--	------	--	------	--	------	------

Households by Income

	1990		2000		2008		2013		Percent Change	
	Census		Census		Estimate		Projection		1990 to 2000	2008 to 2013
\$0 - \$15,000	3,879	12.6%	3,732	10.0%	2,858	7.1%	2,580	6.3%	-3.8%	-9.7%
\$15,000 - \$24,999	5,434	17.7%	4,370	11.7%	3,169	7.9%	2,593	6.3%	-19.6%	-18.2%
\$25,000 - \$34,999	5,972	19.5%	5,754	15.3%	4,433	11.1%	3,813	9.3%	-3.6%	-14.0%
\$35,000 - \$49,999	7,683	25.1%	7,355	19.6%	7,393	18.4%	6,770	16.5%	-4.3%	-8.4%
\$50,000 - \$74,999	5,422	17.7%	9,147	24.4%	9,349	23.3%	9,482	23.1%	197.0%	1.4%
\$75,000 - \$99,999	1,426	4.7%	4,103	10.9%	6,116	15.3%	6,636	16.2%	187.8%	8.5%
\$100,000 - \$149,999	601	2.0%	2,235	6.0%	4,918	12.3%	6,356	15.5%	272.2%	29.2%
\$150,000 +	232	0.8%	797	2.1%	1,880	4.7%	2,870	7.0%	243.6%	52.6%
Average Hhld Income	\$39,486		\$52,754		\$55,085		\$58,697		33.6%	6.6%
Median Hhld Income	\$35,060		\$44,397		\$54,739		\$60,698		26.6%	10.9%
Per Capita Income	\$15,975		\$22,007		\$23,135		\$24,532		37.8%	6.0%

Employment and Business

	1990		2000		2008		2013		Percent Change	
	Census		Census		Estimate		Projection		1990 to 2000	2008 to 2013
Age 16 + Population	59,928		69,068		73,912		76,281		15.3%	3.2%
In Labor Force	46,518	77.6%	51,020	73.9%	53,981	73.0%	55,798	73.2%	9.7%	3.4%
Employed	44,443	95.5%	49,105	96.3%	50,411	93.4%	52,106	93.4%	10.5%	3.4%
Unemployed	1,914	4.1%	1,828	3.6%	3,445	6.4%	3,561	6.4%	-4.5%	3.4%
In Armed Forces	162	0.3%	87	0.2%	124	0.2%	131	0.2%	-46.0%	5.0%
Not In Labor Force	13,410	22.4%	18,047	26.1%	19,931	27.0%	20,483	26.9%	34.6%	2.8%
Number of Employees (Daytime Pop)					38,598					
Number of Establishments					2,869					
Emp in Blue Collar Occupations			17,239	35.1%						
Emp in White Collar Occupations			31,867	64.9%						

Housing Units

Percent Change

	1990 Census		2000 Census		2008 Estimate		2013 Projection		1990 to 2000	2008 to 2013
Total Housing Units	32,647		39,567		46,576		50,659		21.2%	8.8%
Owner Occupied	17,129	52.5%	21,341	53.9%	23,602	50.7%	24,905	49.2%	24.6%	5.5%
Renter Occupied	13,539	41.5%	16,153	40.8%	16,515	35.5%	16,195	32.0%	19.3%	-1.9%
Vacant	1,981	6.1%	2,074	5.2%	6,459	13.9%	9,559	18.9%	4.7%	48.0%

Vehicles Available

	1990 Census		2000 Census		2008 Estimate		2013 Projection		Percent Change	
									1990 to 2000	2008 to 2013
Average Vehicles Per Hhld	1.80		1.60		1.80		1.80		-10.7%	4.7%
0 Vehicles Available	1,158	3.3%	1,671	4.5%	1,863	4.6%	1,861	4.5%	44.2%	-0.1%
1 Vehicle Available	10,780	31.0%	15,117	40.3%	16,490	41.1%	16,947	41.2%	40.2%	2.8%
2+ Vehicles Available	22,794	65.6%	20,706	55.2%	21,763	54.3%	22,292	54.2%	-9.2%	2.4%

Marital Status

	1990 Census		2000 Census		2008 Estimate		2013 Projection		Percent Change	
									1990 to 2000	2008 to 2013
Age 15+ Population	60,857		70,219		75,161		77,497		15.4%	3.1%
Married, Spouse Present	34,412	56.6%	34,452	49.1%	37,519	49.9%	38,952	50.3%	0.1%	3.8%
Married, Spouse Absent	1,019	1.7%	2,401	3.4%	2,522	3.4%	2,581	3.3%	135.5%	2.4%
Divorced	6,704	11.0%	9,750	13.9%	10,116	13.5%	10,297	13.3%	45.4%	1.8%
Widowed	2,966	4.9%	3,725	5.3%	3,793	5.1%	3,817	4.9%	25.6%	0.6%
Never Married	15,749	25.9%	19,890	28.3%	21,212	28.2%	21,850	28.2%	26.3%	3.0%

Educational Attainment

	1990 Census		2000 Census		2008 Estimate		2013 Projection		Percent Change	
									1990 to 2000	2008 to 2013
Age 25+ Population	48,820		57,995		62,776		65,318		18.8%	4.0%
Grade K - 8	1,506	3.1%	984	1.7%	1,220	1.9%	1,127	1.7%	-34.7%	-7.6%
Grade 9 - 12	5,386	11.0%	5,334	9.2%	4,170	6.6%	3,486	5.3%	-1.0%	-16.4%
High School Graduate	16,593	34.0%	19,541	33.7%	22,404	35.7%	24,132	37.0%	17.8%	7.7%
Some College, No Degree	11,222	23.0%	14,173	24.4%	13,190	21.0%	12,510	19.2%	26.3%	-5.2%
Associates Degree	3,389	6.9%	4,038	7.0%	4,674	7.5%	5,052	7.7%	19.1%	8.1%
Bachelor's Degree	7,499	15.4%	9,690	16.7%	11,664	18.6%	12,687	19.4%	29.2%	8.8%
Graduate Degree	3,228	6.6%	3,985	6.9%	5,455	8.7%	6,324	9.7%	23.4%	15.9%
No Schooling Completed			251	0.4%						



Theme by X20060327156

Theme No Theme by Census Tracts

- Subject Site
- 3 mile radius
- Big City Ctr
- Medium City Ctr
- Small City Ctr
- Prim. Hwy
- Secd. Hwy
- Maj. Rds
- Water Bodies
- Rivers
- Airports
- Parks

Summary

Source: Applied Geographic Solutions © 2007.
NAI Site Right is brought to you by SRC, LLC. © 2007
All Rights Reserved

Date: 05/29/09

