

MULTI-PURPOSE FLEX OFFICE / WAREHOUSE FOR SALE

3580-3590 Westerville Road, Westerville, OH 43224



PROPERTY DESCRIPTION

- 7,280 SF BUILDING
- SIX DRIVE-INS
- 16' CLEAR HEIGHT
- FORMER AUTO REPAIR, TIRE & BODY SHOP
- LOCATED NORTHEAST OF WOODSEGE ROAD AND WESTERVILLE ROAD

SALE PRICE \$449,500

contact information

Mike Semon | tel 614 629 5217
mjsemon@ohioequities.com

Dan Sheeran | tel 614 629 5216
dsheeran@ohioequities.com

NAI Ohio Equities^{REALTORS®}
Commercial Real Estate Services, Worldwide.

The information contained herein has been given to us by the owner of the property or other sources we deem reliable. We have no reason to doubt its accuracy, but we do not guarantee it. All information should be verified prior to purchase or lease.

Main Office
605 S Front St Suite 200
Columbus, Ohio 43215
tel 614 224 2400 | fax 614 224 5436
www.ohioequities.com

PROPERTY PHOTOGRAPHS

3580-3590 Westerville Road, Westerville, OH 43224



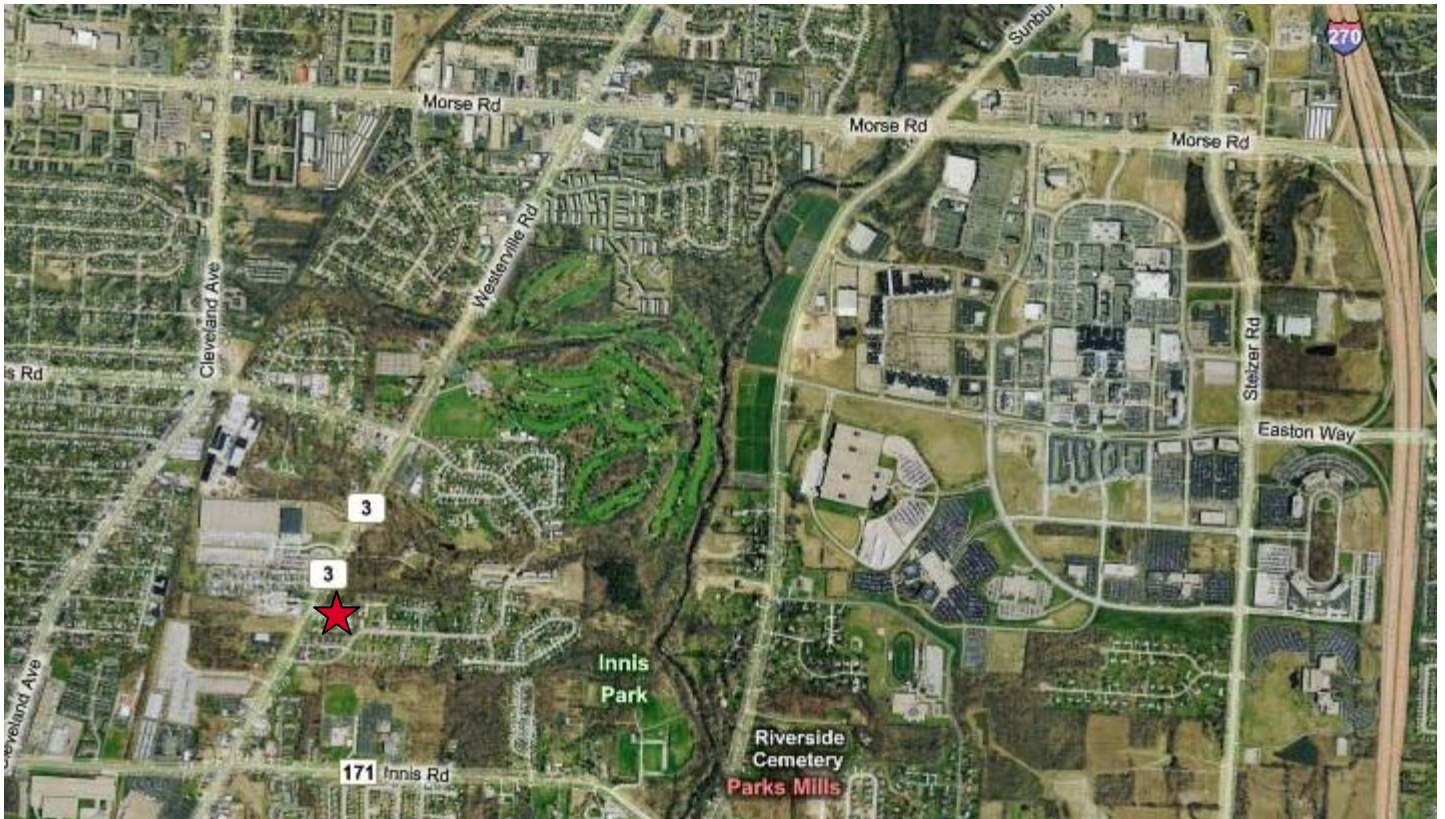
contact information

Mike Semon | tel 614 629 5217

Dan Sheeran | tel 614 629 5216

AERIAL IMAGERY & LOCATION MAP

3580-3590 Westerville Road, Westerville, OH 43224



NAI Ohio Equities REALTORS®
Commercial Real Estate Services, Worldwide.

The information contained herein has been given to us by the owner of the property or other sources we deem reliable. We have no reason to doubt its accuracy, but we do not guarantee it. All information should be verified prior to purchase or lease.

contact information

Mike Semon | tel 614 629 5217
mjsemon@ohioequities.com

Dan Sheeran | tel 614 629 5216
dsheeran@ohioequities.com