

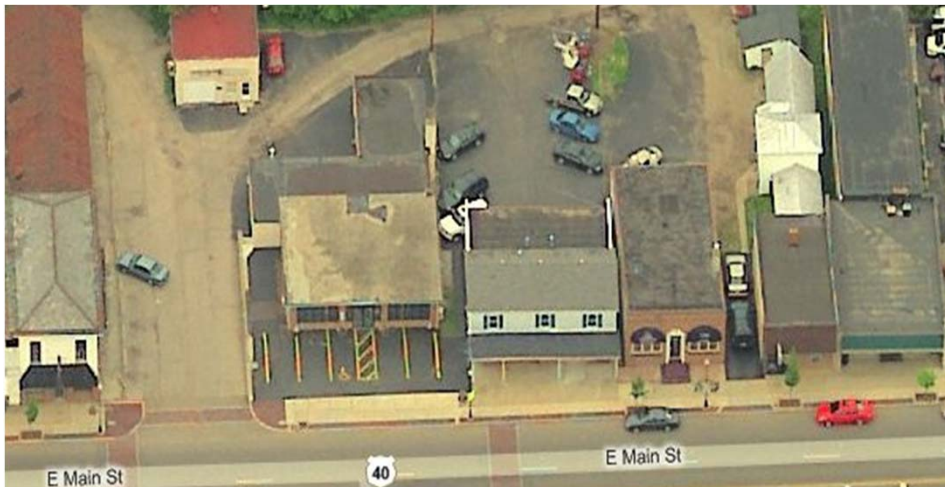
# FOR LEASE RETAIL SPACE AVAILABLE

7360-7362 E. Main Street – Reynoldsburg, OH 43068

## LEASE RATE REDUCED!



SUITE	SF	RATE	MONTHLY RATE
7362	1,774	\$8.12 PSF GROSS	\$1,200.00/MONTH



### PROPERTY OVERVIEW

- 2,698 SF BUILDING
- 1,774 SF AVAILABLE FOR LEASE
- 8' CLEAR HEIGHT
- VERY CLEAN OFFICE/RETAIL SPACE
- LOCATED ON MAIN STREET IN THE HEART OF REYNOLDSBURG
- PRIVATE PARKING IN REAR
- SET UP FOR WALK-IN TRAFFIC

**LEASE RATE \$6.75 PSF GROSS**

#### contact information

**Mark Schillig**

tel 614 629 5228 | mobile 614 206 1536

[mschillig@ohioequities.com](mailto:mschillig@ohioequities.com)

#### Main Office

605 S. Front Street – Suite 200

Columbus, OH 43215

[www.ohioequities.com](http://www.ohioequities.com)

[www.markschillig.com](http://www.markschillig.com)

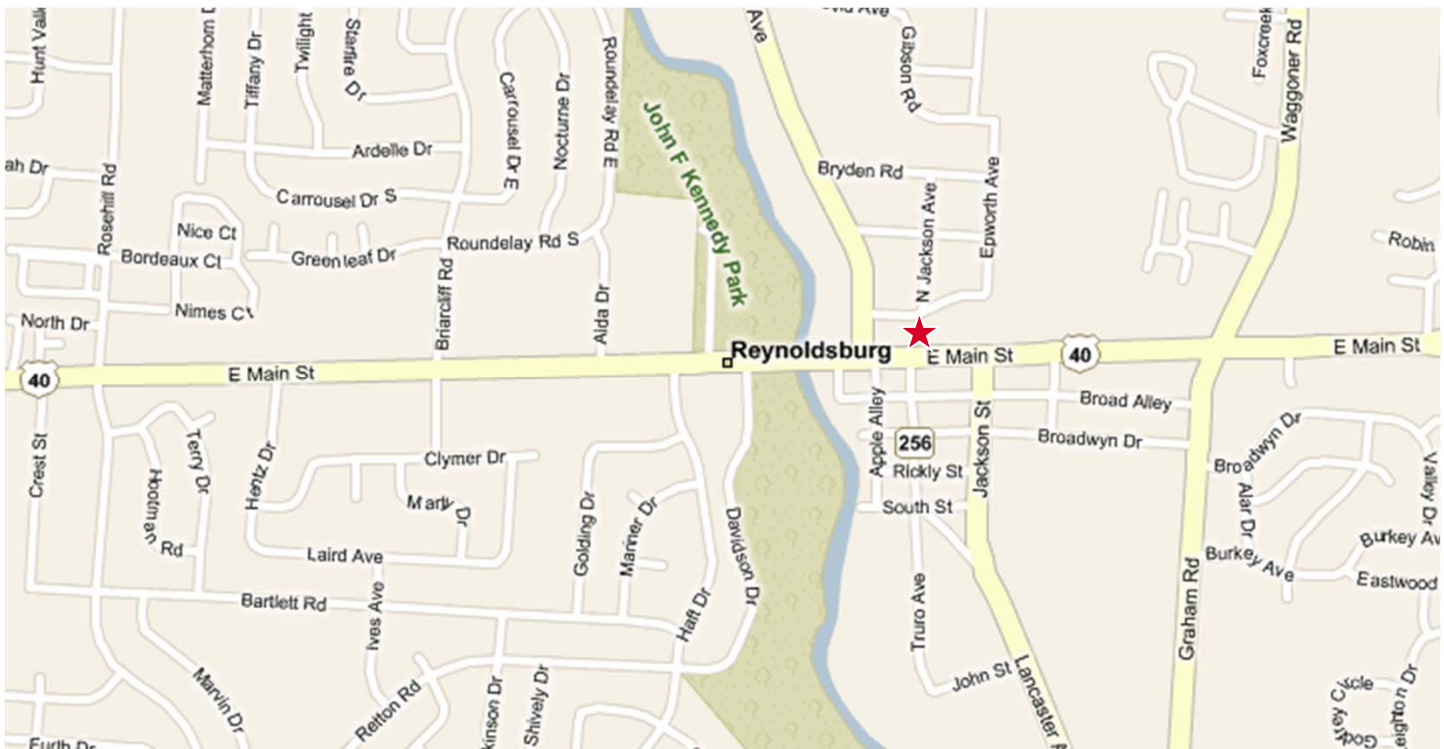
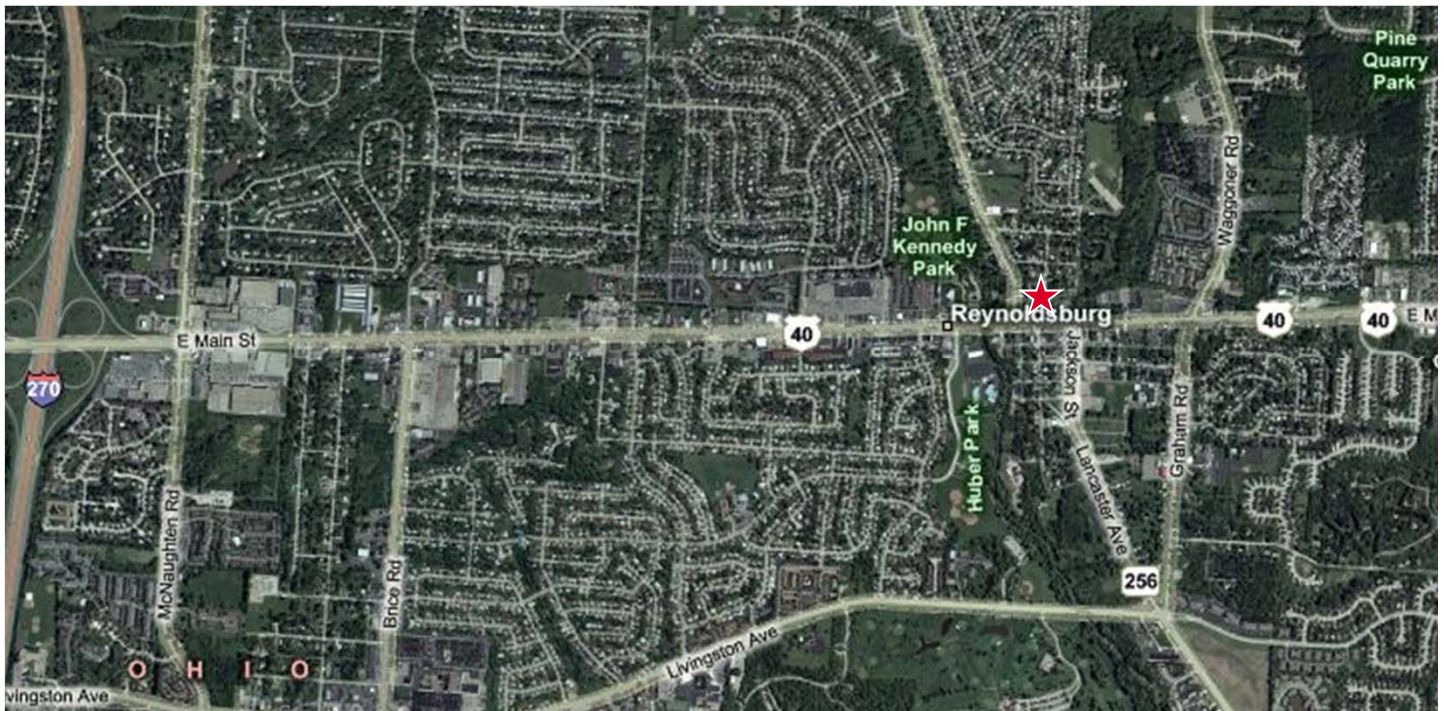
**NAI** Ohio Equities<sup>REALTORS®</sup>

Commercial Real Estate Services, Worldwide.

The information contained herein has been given to us by the owner of the property or other sources we deem reliable. We have no reason to doubt its accuracy, but we do not guarantee it. All information should be verified prior to purchase or lease.

# AERIAL IMAGERY & LOCATION MAP

7360-7362 E. Main Street – Reynoldsburg, OH 43068



## contact information

**Mark Schillig**

tel 614 629 5228 | mobile 614 206 1536

[mschillig@ohioequities.com](mailto:mschillig@ohioequities.com)

## Main Office

605 S. Front Street – Suite 200

Columbus, OH 43215

[www.ohioequities.com](http://www.ohioequities.com)

[www.markschillig.com](http://www.markschillig.com)



Commercial Real Estate Services, Worldwide.

The information contained herein has been given to us by the owner of the property or other sources we deem reliable. We have no reason to doubt its accuracy, but we do not guarantee it. All information should be verified prior to purchase or lease.