



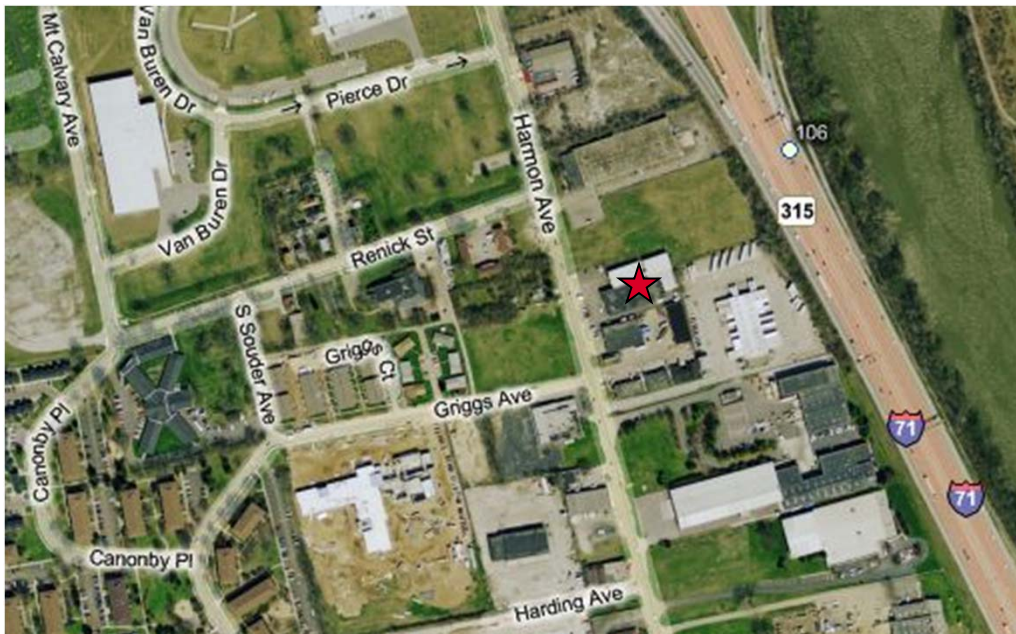
WAREHOUSE SPACE AVAILABLE FOR LEASE

720 Harmon Avenue – Columbus, OH 43223

PROPERTY DESCRIPTION

- 22,176 SF BUILDING AVAILABLE
- SITUATED ON 1.24 ACRES
- BUILT IN 1967
- BACK-UP GENERATOR
- NEW RUBBER MEMBRANE ROOF 07'
- NEAR INTERSECTION OF HARMON AVENUE AND GREENLAWN AVENUE
- TWO MINUTES FROM I-70 & SR-104
- FIVE MINUTES FROM DOWNTOWN

LEASE RATE \$2.35 PSF GROSS



contact information

Matt Osowski

tel 614 629 5229

mosowski@ohioequities.com

Philip Bird

tel 614 629 5296

pbird@ohioequities.com

Main Office

605 S Front St Suite 200

Columbus, Ohio 43215

tel 614 224 2400

fax 614 224 5436

www.ohioequities.com

NAI Ohio Equities^{REALTORS®}

Commercial Real Estate Services, Worldwide.

The information contained herein has been given to us by the owner of the property or other sources we deem reliable. We have no reason to doubt its accuracy, but we do not guarantee it. All information should be verified prior to purchase or lease.

PROPERTY PHOTOGRAPHS

720 Harmon Avenue – Columbus, OH 43223



contact information

Matt Osowski

tel 614 629 5229

mosowski@ohioequities.com

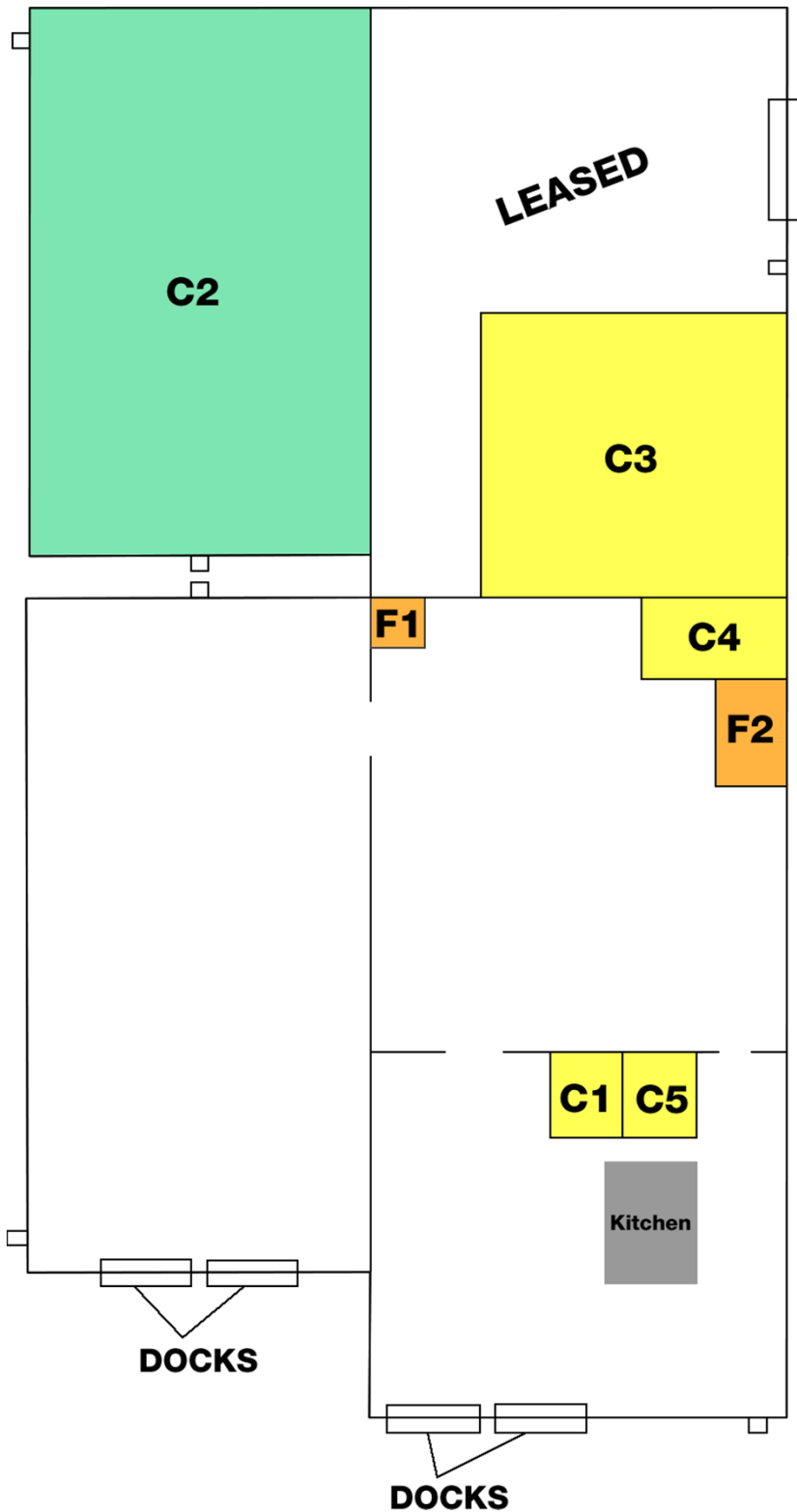
Philip Bird

tel 614 629 5296

pbird@ohioequities.com

FLOORPLAN

720 Harmon Avenue – Columbus, OH 43223



Temperature Controlled Storage

Freezer

Cooler

contact information

Matt Osowski

tel 614 629 5229

mosowski@ohioequities.com

Philip Bird

tel 614 629 5296

pbird@ohioequities.com

PROPERTY SPECIFICATIONS

720 Harmon Avenue – Columbus, OH 43223

TOTAL PROPERTY

DATE	ADDITION NAME	FEET	INCHES	FEET	INCHES	SQUARE FEET
	Property Lines	180		300		54,000
		N/S		E/W		
		WIDTH		LENGTH		
1963	MAIN BUILDING	75	4	80	0	6,026.67
1969	INTERNAL OFFICE					1,593.33
1979	1ST ADDITION	75	4	68	0	5,122.67
1983	LEAF COOLER	56		35		1,960.00
1985	GARAGE	60	2	44	0	2,647.33
		19	2	35	0	670.83
						3,318.17
1995	DOCK 3 AND 4	52	2	100	0	5,216.67
1998	POTATO COOLER	50	0	77	0	3,850
						TOTAL SF WITHOUT GARAGE
						22,176.00
						TOTAL SF WITH GARAGE
						25,494.17

COOLERS

ADDITION NAME	FEET	INCHES	FEET	INCHES	FEET	INCHES	SQUARE FT.	CUBIC FT.
C1	21	5	19	4	9		414.06	3,726.50
C2	50	0	77	0	12	9	3,850.00	49,087.50
C3	56	0	35	0	17	6	1,960.00	34,300.00
C4	34	0	20	10	9	5	708.33	6,670.14
C5	15	5	23	4	8	8	359.72	3,117.59
F1	8	3	26	8	7	0	220	1,540.00
F2	16	9	14	10	9	10	248.46	2,443.17
							TOTALS	7,760.57
								100,884.91
								1,950.57

OFFICES

	FEET	INCHES	FEET	INCHES	SF
FOYER	21	5	12	8	271.28
FRONT OFFICE	16	8	11	5	190.28
FRONT BATH	5		4		20.00
REAR BATH	5		4	4	21.67
HALLWAY	25	5	6	6	165.21
MIDDLE OFFICE	21	8	14		303.33
DEAN'S OFFICE	15	5	11	5	176.01
NATHAN OFFICE	15		12		180.00
KITCHEN	16		11	3	180.00
SERVER ROOM	7	4	11	8	85.56
					1593.33

contact information

Matt Osowski

tel 614 629 5229

mosowski@ohioequities.com

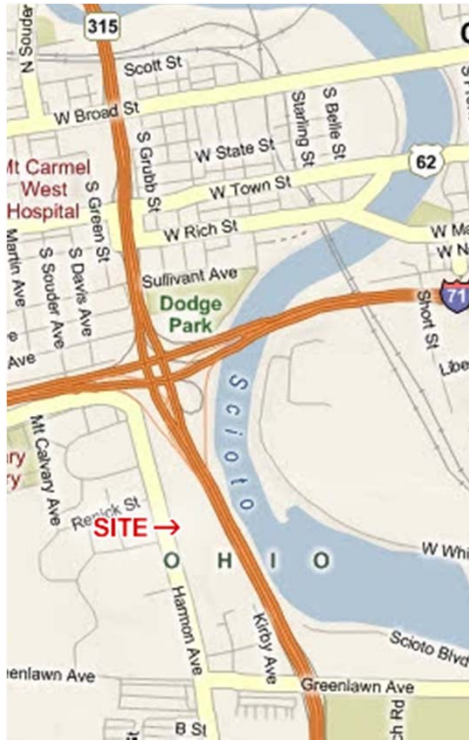
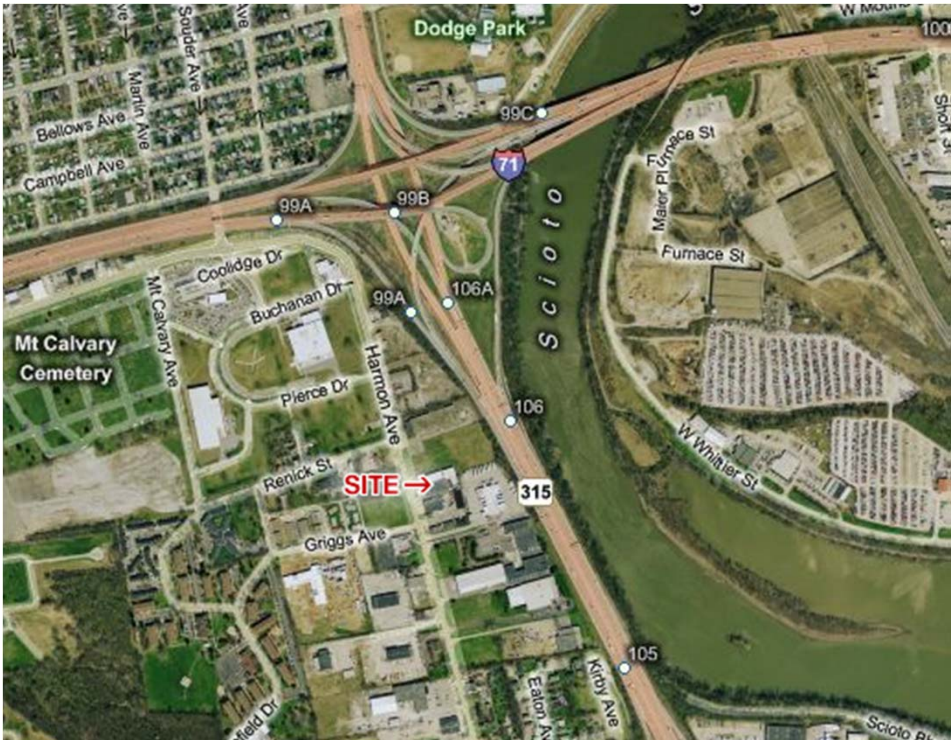
Philip Blrd

tel 614 629 5296

pbird@ohioequities.com

AERIAL IMAGERY & LOCATION MAPS

720 Harmon Avenue – Columbus, OH 43223



contact information
Matt Osowski
 tel 614 629 5229
 mosowski@ohioequities.com

Philip Bird
 tel 614 629 5296
 pbird@ohioequities.com