

**FOR LEASE**

# **FLEX UNITS AVAILABLE**

460-480 Schrock Road – Columbus, OH 43229

[WWW.CREEKRUNPROPERTY.COM](http://WWW.CREEKRUNPROPERTY.COM)



## **PROPERTY DESCRIPTION**

- 111,436 SF BUILDING
- 21,783 SF AVAILABLE – 2,400 SF UP TO 12,000 SF UNITS
- ZONED I-1
- 18' CLEAR HEIGHT
- THREE DOCKS – 8' X 10'
- 3 PHASE POWER/200 AMPS
- FULLY SPRINKLERED
- TENANT PAYS GAS, WATER & ELECTRIC

**LEASE RATE \$6.50 - \$7.00 PSF MG**

### **contact information**

**Matt Osowski** | tel 614 629 5229  
mosowski@ohioequities.com

**Curt Berlin SIOR** | tel 614 629 5221  
cberlin@ohioequities.com

### **Main Office**

605 S Front St Suite 200  
Columbus, Ohio 43215  
tel 614 224 2400 | fax 614 224 5436  
[www.ohioequities.com](http://www.ohioequities.com)

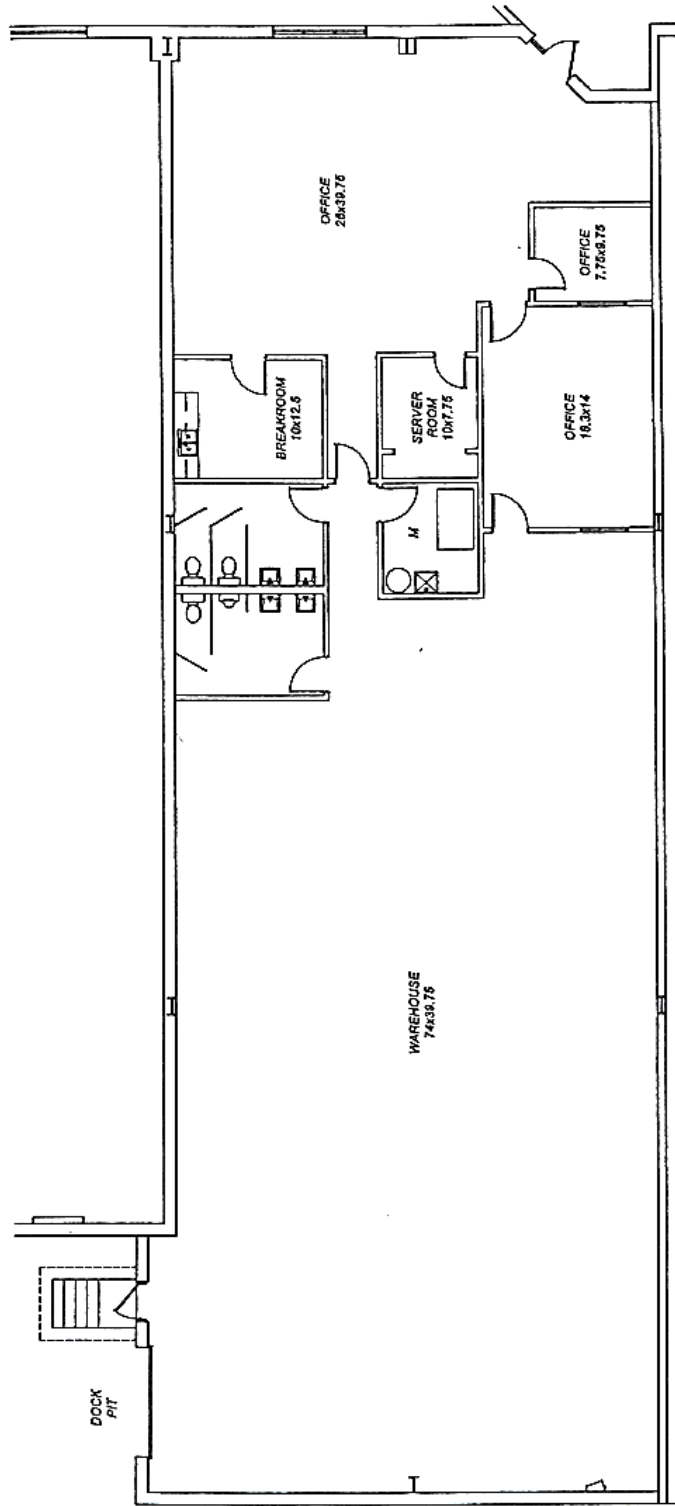
**NAI Ohio Equities** REALTORS®

Commercial Real Estate Services, Worldwide.

The information contained herein has been given to us by the owner of the property or other sources we deem reliable. We have no reason to doubt its accuracy, but we do not guarantee it. All information should be verified prior to purchase or lease.

# FLOORPLAN 460E

460-480 Schrock Road – Columbus, OH 43229

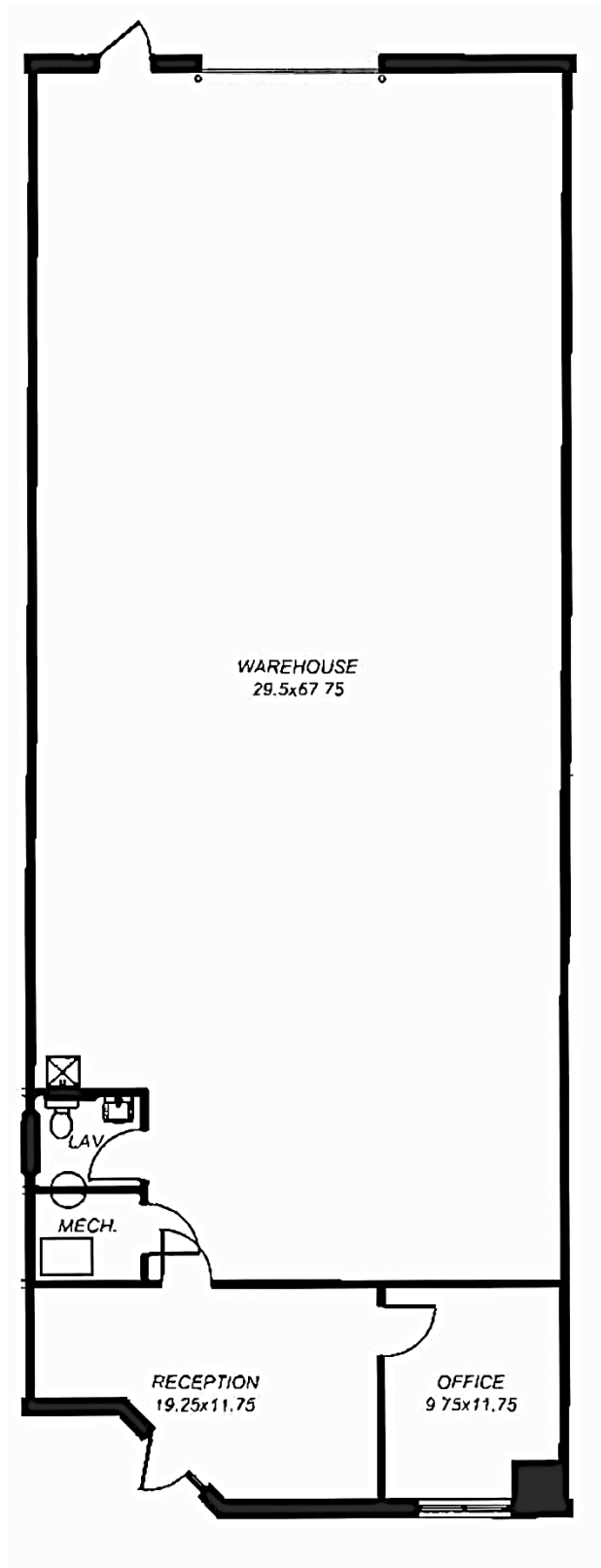


**SUITE 460 E**  
**4,968 SF AVAILABLE**

# FLOORPLAN 470F

460-480 Schrock Road – Columbus, OH 43229

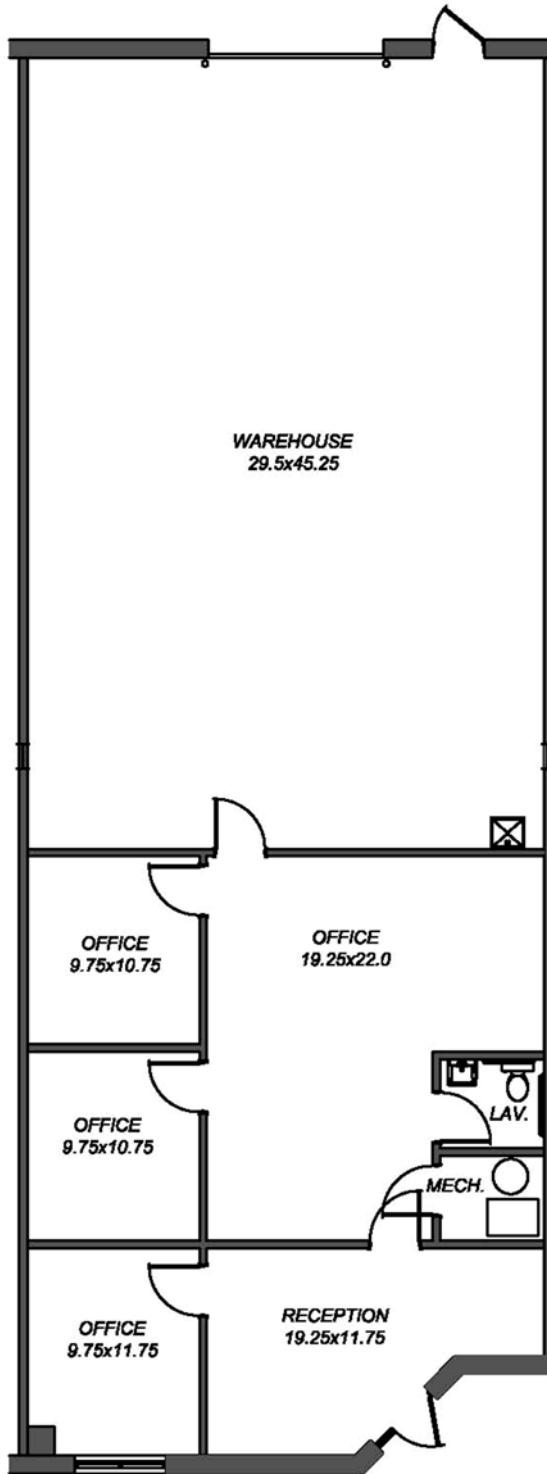
**SUITE 470 F**  
**2,400 SF AVAILABLE**



# FLOORPLAN 470I

460-480 Schrock Road – Columbus, OH 43229

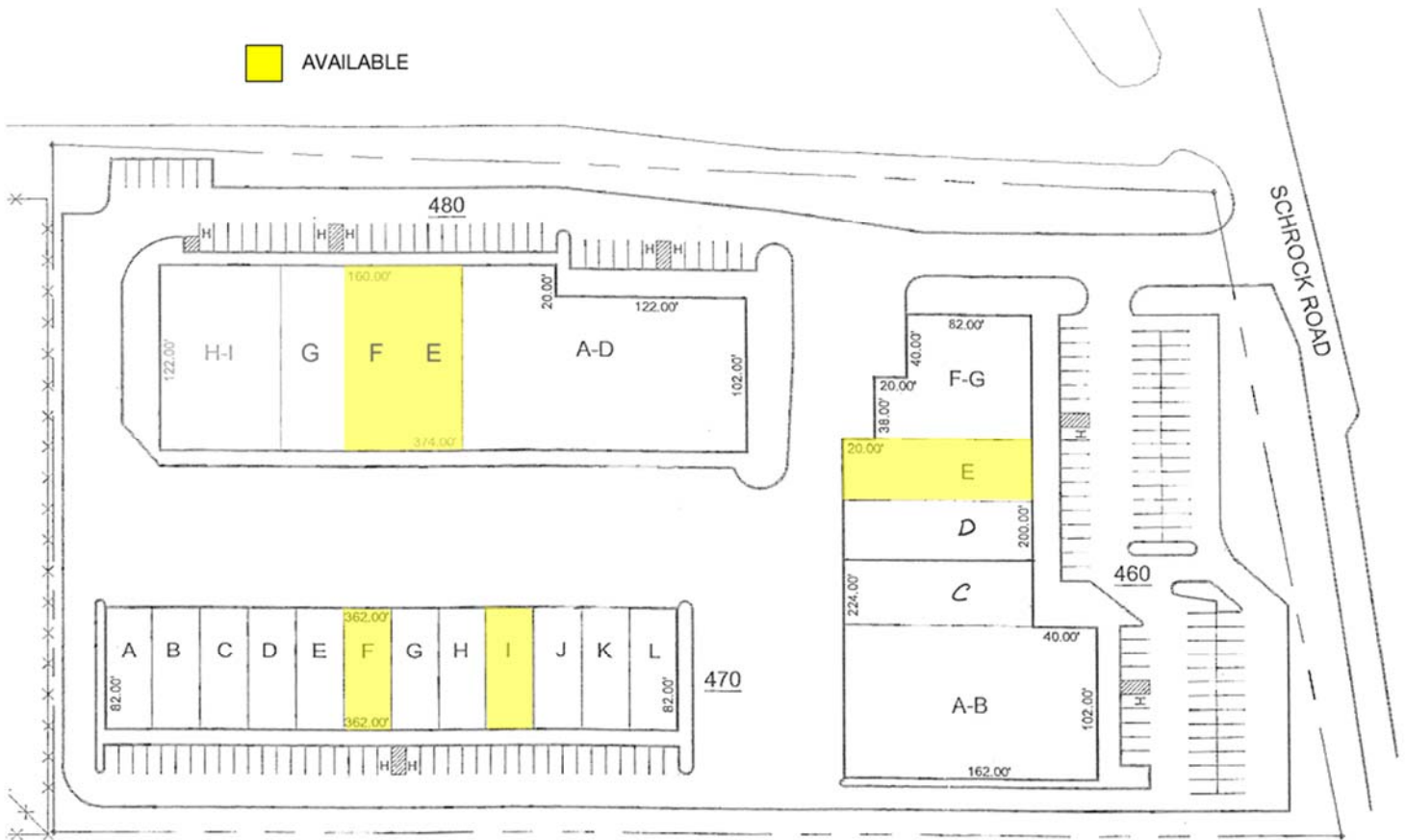
**SUITE 470 I**  
**2,415 SF AVAILABLE**





# SITE PLAN

460-480 Schrock Road – Columbus, OH 43229



# AERIAL IMAGERY & LOCATION MAPS

460-480 Schrock Road – Columbus, OH 43229

