



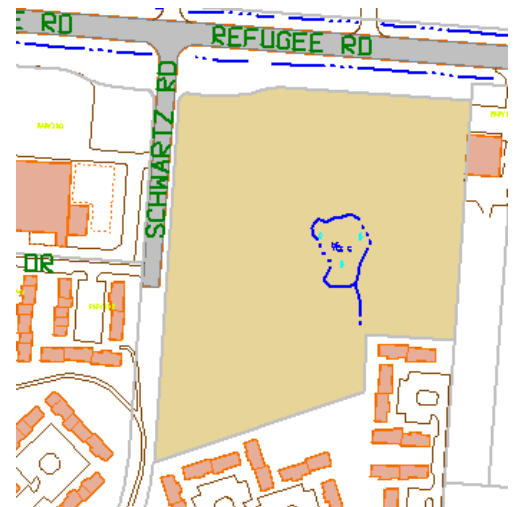
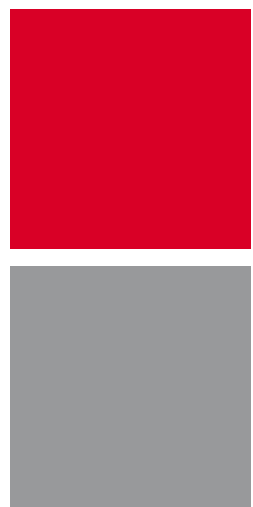
## PROPERTY OVERVIEW

- 9.464 ACRES AVAILABLE
- ALL UTILITIES AVAILABLE
- ½ MILE FROM SR 104 AND US 33
- 1.3 MILES FROM I-270
- 1.5 MILES FROM I-70
- GREAT DEVELOPMENT OPPORTUNITY

**LISTING PRICE \$700,000**

# VACANT LAND FOR SALE DEVELOPMENT OPPORTUNITY

0 Refugee Road – Columbus, OH 43232



### contact information

**Matt Osowski**  
tel 614 629 5229  
mosowski@ohioequities.com

**Jim Merkel SIOR, CCIM**  
tel 614 629 5214  
jmerkel@ohioequities.com

**Main Office**  
605 S Front St Suite 200  
Columbus, Ohio 43215  
tel 614 224 2400 | fax 614 224 5436  
www.ohioequities.com

**NAI Ohio Equities** REALTORS®  
Commercial Real Estate Services, Worldwide.

The information contained herein has been given to us by the owner of the property or other sources we deem reliable. We have no reason to doubt its accuracy, but we do not guarantee it. All information should be verified prior to purchase or lease.

# SANITARY SEWER DRAWING

0 Refugee Road – Columbus, OH 43232



**NAI** Ohio Equities<sup>®</sup> REALTORS<sup>®</sup>  
Commercial Real Estate Services, Worldwide.

The information contained herein has been given to us by the owner of the property or other sources we deem reliable. We have no reason to doubt its accuracy, but we do not guarantee it. All information should be verified prior to purchase or lease.

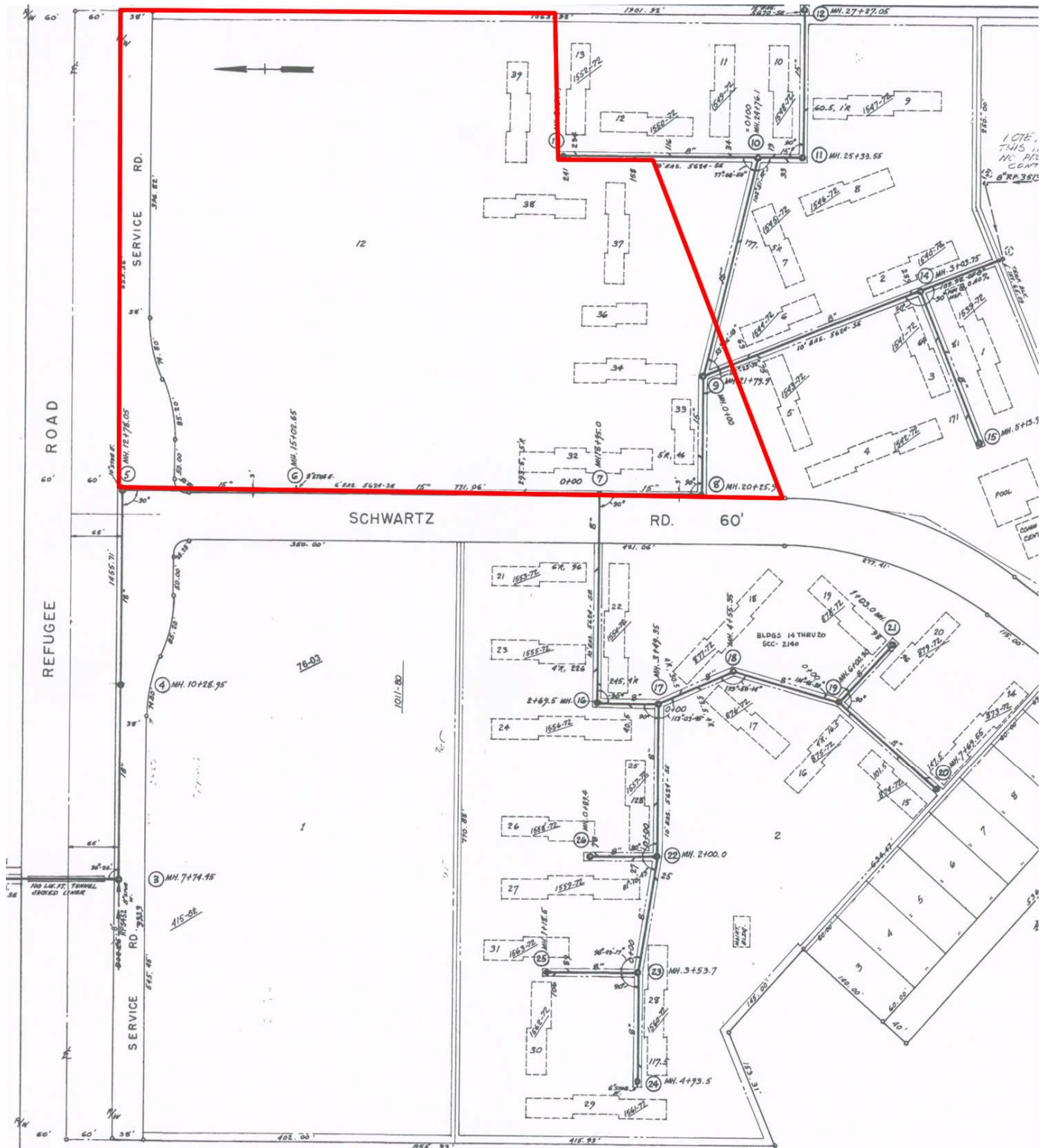
## contact information

**Matt Osowski**  
tel 614 629 5229  
mosowski@ohioequities.com

**Jim Merkel SIOR, CCIM**  
tel 614 629 5214  
jmerkel@ohioequities.com

# PLAT MAP

0 Refugee Road – Columbus, OH 43232



# AERIAL IMAGERY & LOCATION MAPS

0 Refugee Road – Columbus, OH 43232



**NAI** Ohio Equities<sup>REALTORS®</sup>  
 Commercial Real Estate Services, Worldwide.

The information contained herein has been given to us by the owner of the property or other sources we deem reliable. We have no reason to doubt its accuracy, but we do not guarantee it. All information should be verified prior to purchase or lease.

**contact information**

**Matt Osowski**  
 tel 614 629 5229  
 mosowski@ohioequities.com

**Jim Merkel SIOR, CCIM**  
 tel 614 629 5214  
 jmerkel@ohioequities.com