

## CLASS "A" OFFICE SPACE AVAILABLE



**FOR LEASE**

## OFFICE SPACE AVAILABLE

730-750 E. Long Street – Columbus, OH 43203



For more information, go to:  
**WWW.750EASTLONG.COM**

### PROPERTY DESCRIPTION

- 53,300 SF DOWNTOWN CLASS "A" OFFICE BUILDING
- 1,660 SF OFFICE SUITE AVAILABLE ON 3<sup>RD</sup> FLOOR – BUILT TO SUIT OPPORTUNITY
- 522 SF STREET LEVEL RETAIL SUITE AVAILABLE ON E. LONG STREET – FORMERLY DRY CLEANER
- ELEVATOR ACCESS
- FREE ON-SITE PARKING
- ON-SITE CAFÉ
- LOCATED ADJACENT TO COLUMBUS STATE COMMUNITY COLLEGE

**LEASE RATE \$10.50 PSF NNN**

#### contact information

**Matt Gregory** | tel 614 629 5234  
mgregory@ohioequities.com

**Andy Dutcher** | tel 614 629 5266  
adutcher@ohioequities.com

**Ben Layman** | tel 614 629 5293  
blayman@ohioequities.com

#### Main Office

605 S Front St Suite 200  
Columbus, Ohio 43215  
tel 614 224 2400 | fax 614 224 5436  
www.ohioequities.com

**NAI** Ohio Equities<sup>REALTORS®</sup>

Commercial Real Estate Services, Worldwide.

The information contained herein has been given to us by the owner of the property or other sources we deem reliable. We have no reason to doubt its accuracy, but we do not guarantee it. All information should be verified prior to purchase or lease.

# PROPERTY OVERVIEW

<b>Address:</b>	730-750 East Long Street   Columbus, OH 43203
<b>Location:</b>	Located near the intersection of E. Long Street and Hamilton Avenue.
<b>Building SF:</b>	53,300 SF   Downtown class “A” office building
<b>Available SF:</b>	522 SF up to 1,660 SF Office/retail/medical space available
<b>Comments:</b>	1,660 SF office suite available on 3 <sup>rd</sup> floor – build to suit opportunity  522 SF street level retail suite available on E. Long Street – Former dry cleaner  Elevator access  Free on-site parking  On-site café  Located adjacent to Columbus State Community College
<b>Lease Rate:</b>	<b>\$10.50 PSF NNN</b>

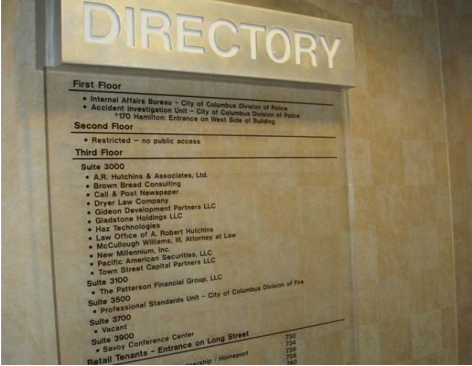
**NAI Ohio Equities** REALTORS®  
Commercial Real Estate Services, Worldwide.



**Matt Gregory** | 614 629 5234  
mgregory@ohioequities.com  
**Andy Dutcher** | 614 629 5266  
adutcher@ohioequities.com  
**Ben Layman** | 614 629 5293  
blayman@ohioequities.com

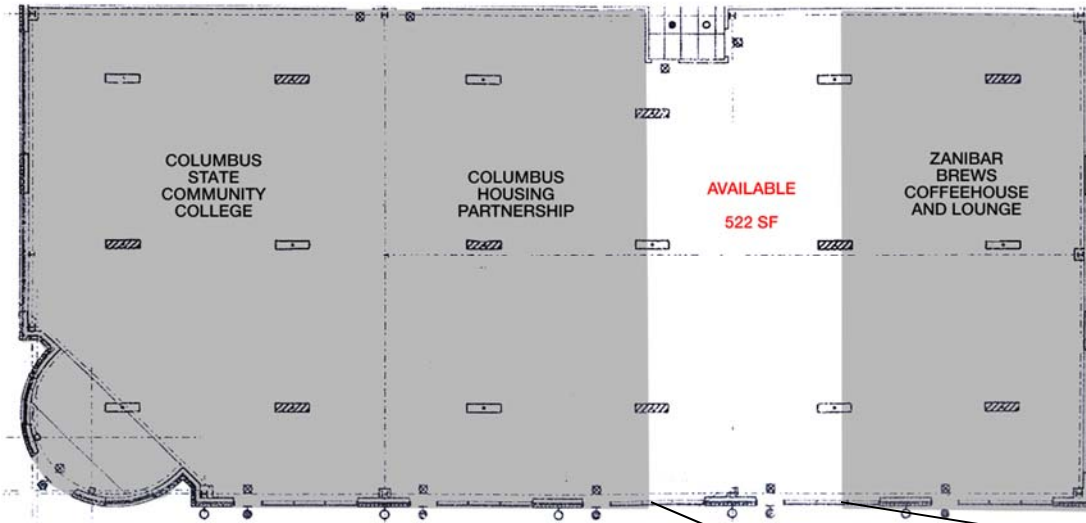
# PROPERTY PHOTOGRAPHS

730-750 E. Long Street – Columbus, OH 43203

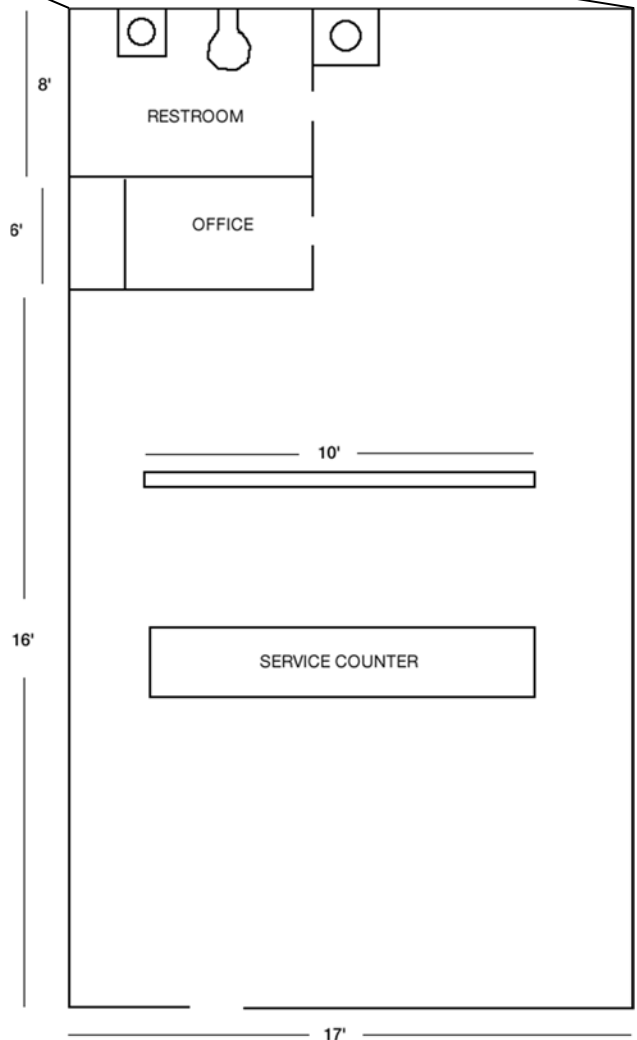


# FLOORPLAN – 738 E Long Suite

730-750 E. Long Street – Columbus, OH 43203



LEASED



**NAI Ohio Equities** REALTORS®  
 Commercial Real Estate Services, Worldwide.

**Matt Gregory** | tel 614 629 5234  
 mgregory@ohioequities.com

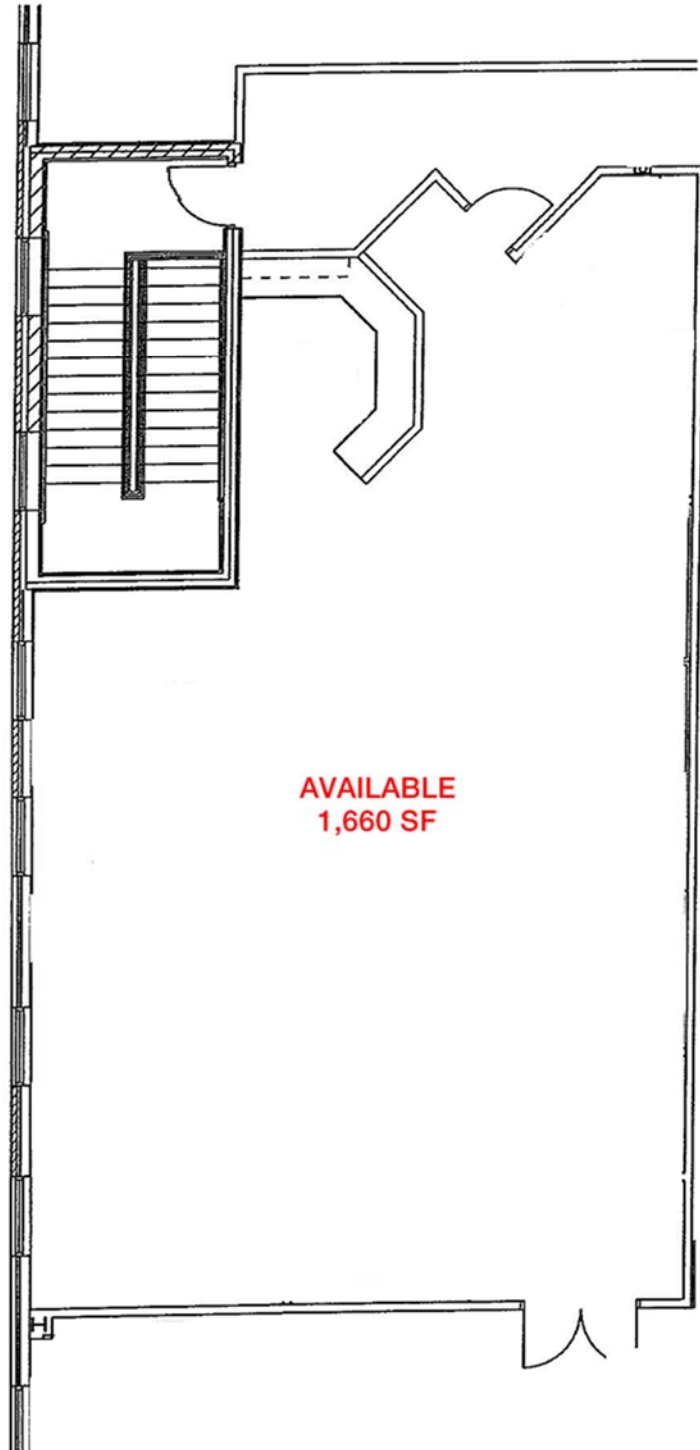
**Andy Dutcher** | tel 614 629 5266  
 adutcher@ohioequities.com

**Ben Layman** | tel 614 629 5293  
 blayman@ohioequities.com

The information contained herein has been given to us by the owner of the property or other sources we deem reliable. We have no reason to doubt its accuracy, but we do not guarantee it. All information should be verified prior to purchase or lease.

# FLOORPLAN – 750 E Long Suite

730-750 E. Long Street – Columbus, OH 43203



# AERIAL IMAGERY & LOCATION MAPS

730-750 E. Long Street – Columbus, OH 43203

