



EXECUTIVE OFFICE SUITE FOR LEASE
OFFICE SPACE AVAILABLE
 538 E. Town Street – Columbus, OH 43215

- PROPERTY DESCRIPTION**
- 12,715 SF BUILDING
 - 601 SF AVAILABLE FOR LEASE LOCATED ON 2ND FLOOR
 - 2 OFFICE EXECUTIVE SUITE
 - SHARED OFFICE SERVICES AVAILABLE
 - DIRECTORY SIGNAGE
 - ELEVATOR ACCESS
 - BUILDING SECURITY SYSTEM
 - GOOD ACCESS TO INTERSTATES
- LEASE RATE \$500.00/MONTH**



SUITE	SIZE	RATE
2 ND FLR	601 SF	\$500.00/MTH

For more information, go to: WWW.538ETOWN.COM

contact information

Matt Gregory
 tel 614 629 5234
 mgregory@ohioequities.com

Ben Layman
 tel 614 629 5293
 blayman@ohioequities.com

Main Office
 605 S Front St Suite 200
 Columbus, Ohio 43215
 tel 614 224 2400
 fax 614 224 5436
 www.ohioequities.com



The information contained herein has been given to us by the owner of the property or other sources we deem reliable. We have no reason to doubt its accuracy, but we do not guarantee it. All information should be verified prior to purchase or lease.

PROPERTY PHOTOGRAPHS

538 E. Town Street – Columbus, OH 43215



NAI Ohio Equities^{REALTORS®}
Commercial Real Estate Services, Worldwide.

The information contained herein has been given to us by the owner of the property or other sources we deem reliable. We have no reason to doubt its accuracy, but we do not guarantee it. All information should be verified prior to purchase or lease.

contact information

Matt Gregory

tel 614 629 5234

mgregory@ohioequities.com

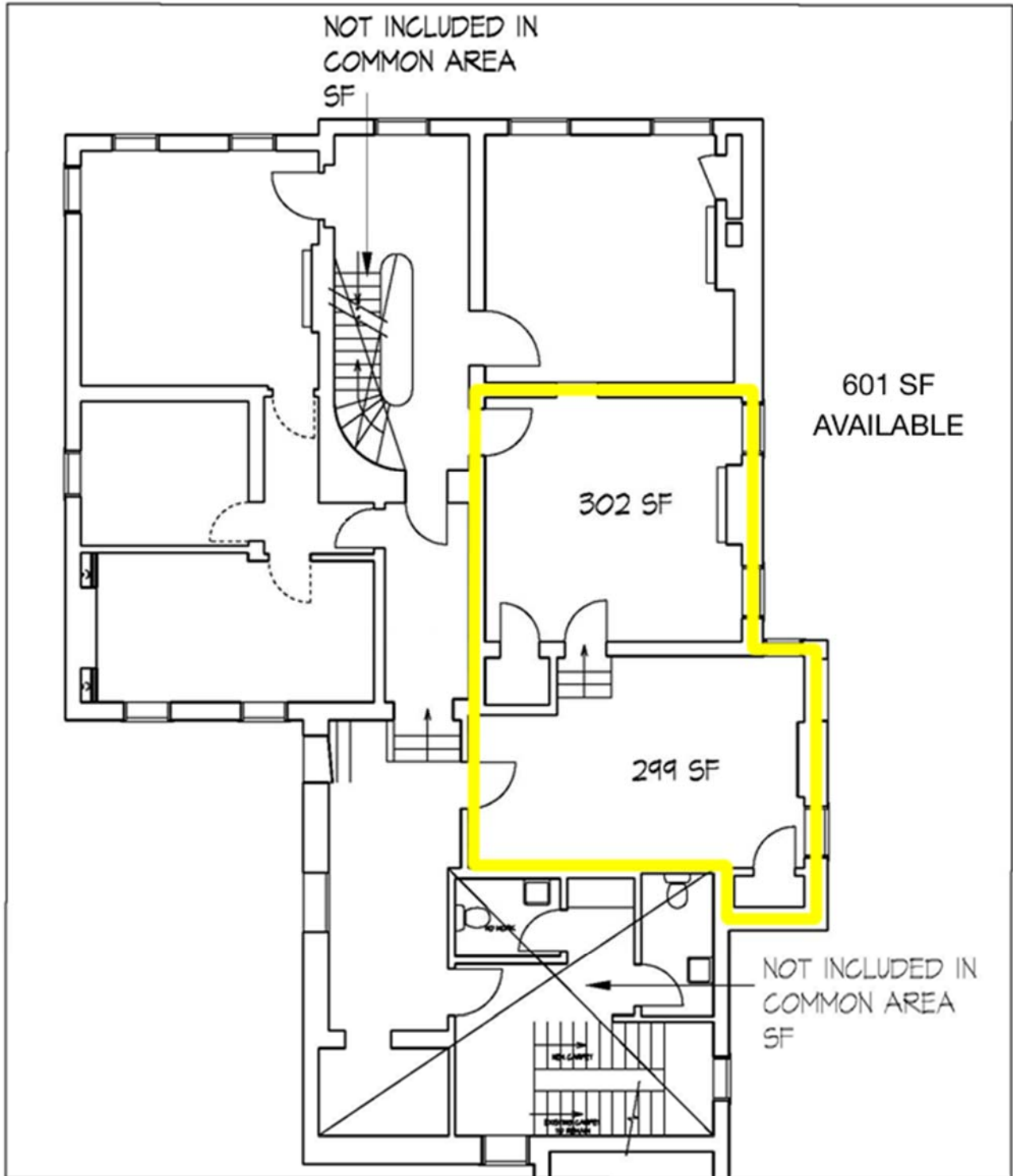
Ben Layman

tel 614 629 5293

blayman@ohioequities.com

FLOOR PLAN

538 E. Town Street – Columbus, OH 43215



contact information

Matt Gregory

tel 614 629 5234

mgregory@ohioequities.com

Ben Layman

tel 614 629 5293

blayman@ohioequities.com

AERIAL IMAGERY & LOCATION MAP

538 E. Town Street – Columbus, OH 43215

