



For more information, go to: WWW.THESENECAOFFICERETAIL.COM

THE SENECA OFFICE/RETAIL FOR LEASE LOFT/OFFICE/STOREFRONT

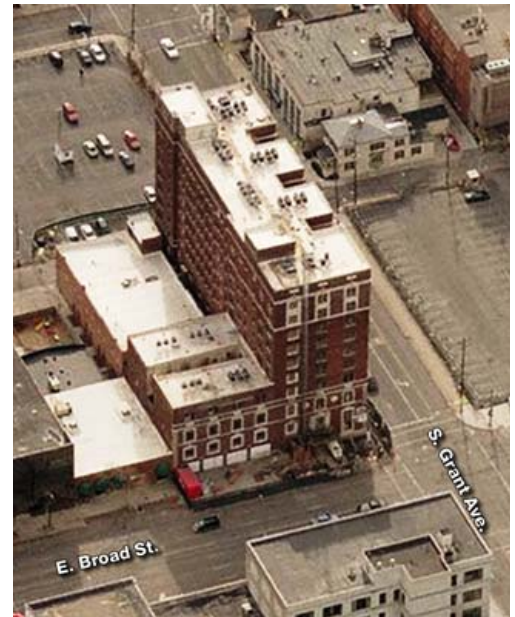
361 E. Broad Street – Columbus, OH 43215

SUITE	SF	RATE
OFFICE	11,000	\$6.00 PSF NNN
RETAIL	1,800	\$20.00 PSF MG
BALLROOM	4,780	\$8.00 PSF NNN



- DOWNTOWN MIXED-USE REDEVELOPMENT
- 11,000 SF OFFICE WITH ADDITIONAL ACCESS ON CAPITOL STREET
- 1,800± SF RETAIL STOREFRONT
- 4,780± SF BALLROOM
- UPSCALE APARTMENTS ABOVE
- WOOD FLOORS, EXPOSED BRICK, LARGE WINDOWS, EXPOSED DUCTWORK
- CLOSE TO I-71 AND I-670
- LOCATED NEAR CCAD, FRANKLIN UNIVERSITY, COLUMBUS METROPOLITAN LIBRARY, AND GRANT MEDICAL CENTER

LEASE RATE: \$6.00-\$20.00 PSF



NAI Ohio Equities REALTORS®

Commercial Real Estate Services, Worldwide.

The information contained herein has been given to us by the owner of the property or other sources we deem reliable. We have no reason to doubt its accuracy, but we do not guarantee it. All information should be verified prior to purchase or lease.

contact information

Matt Gregory | tel 614 629 5234
mgregory@ohioequities.com

Anthony Maronitis
tel 614 629 5270
amaronitis@ohioequities.com

Main Office

605 S Front St Suite 200
Columbus, Ohio 43215
tel 614 224 2400 | fax 614 224 5436
www.ohioequities.com

Floorplan - 1st Floor – Seneca Office / Retail

361 E. Broad Street – Columbus, OH 43215



NAI Ohio Equities REALTORS®
Commercial Real Estate Services, Worldwide.

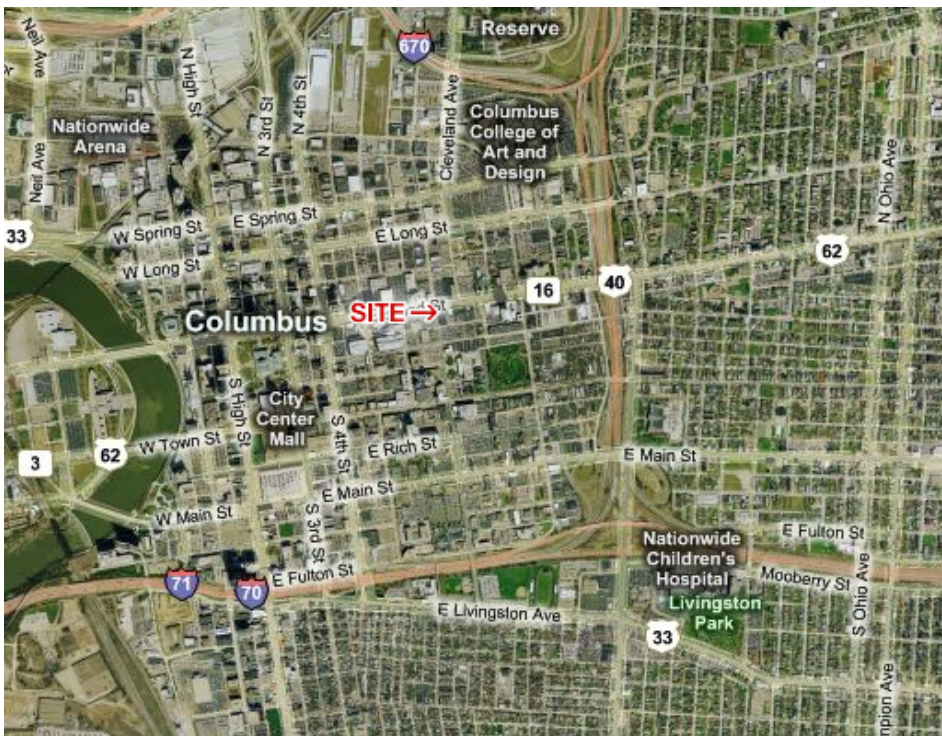
The information contained herein has been given to us by the owner of the property or other sources we deem reliable. We have no reason to doubt its accuracy, but we do not guarantee it. All information should be verified prior to purchase or lease.

contact information
Matt Gregory | tel 614 629 5234
mgregory@ohioequities.com

Anthony Maronitis
tel 614 629 5270
amaronitis@ohioequities.com

Aerial Imagery & Location Maps

361 E. Broad Street – Columbus, OH 43215



Commercial Real Estate Services, Worldwide.

The information contained herein has been given to us by the owner of the property or other sources we deem reliable. We have no reason to doubt its accuracy, but we do not guarantee it. All information should be verified prior to purchase or lease.

contact information
Matt Gregory | tel 614 629 5234
mgregory@ohioequities.com

Anthony Maronitis
tel 614 629 5270
amaronitis@ohioequities.com