



FOR LEASE RETAIL / OFFICE SPACE

2590 Columbus Street – Grove City, OH 43123

PROPERTY OVERVIEW

- 2,240 SF RETAIL/OFFICE SPACE AVAILABLE
- EXCELLENT LOCATION WITH SIGNAGE OPPORTUNITIES AVAILABLE ON BUILDING AND COLUMBUS STREET
- EASY DRIVE-IN / DRIVE-OUT ACCESS
- LARGE PARKING LOT WITH A 4.6 – 1,000 SF RATIO
- 10' CLEAR HEIGHT
- CLEAN OPEN RETAIL/OFFICE AREA
- PRIVATE RESTROOMS AND A KITCHEN
- ZONED COMMERCIAL CLASS C

LEASE RATE \$10.69 PSF MG



For more information, go to:
WWW.GROVECITYOFFICE.COM

contact information

Matt Gregory | tel 614 629 5234
mgregory@ohioequities.com

Andy Dutcher | tel 614 629 5266
adutcher@ohioequities.com

Main Office

605 S Front St Suite 200
Columbus, Ohio 43215
tel 614 224 2400 | fax 614 224 5436
www.ohioequities.com

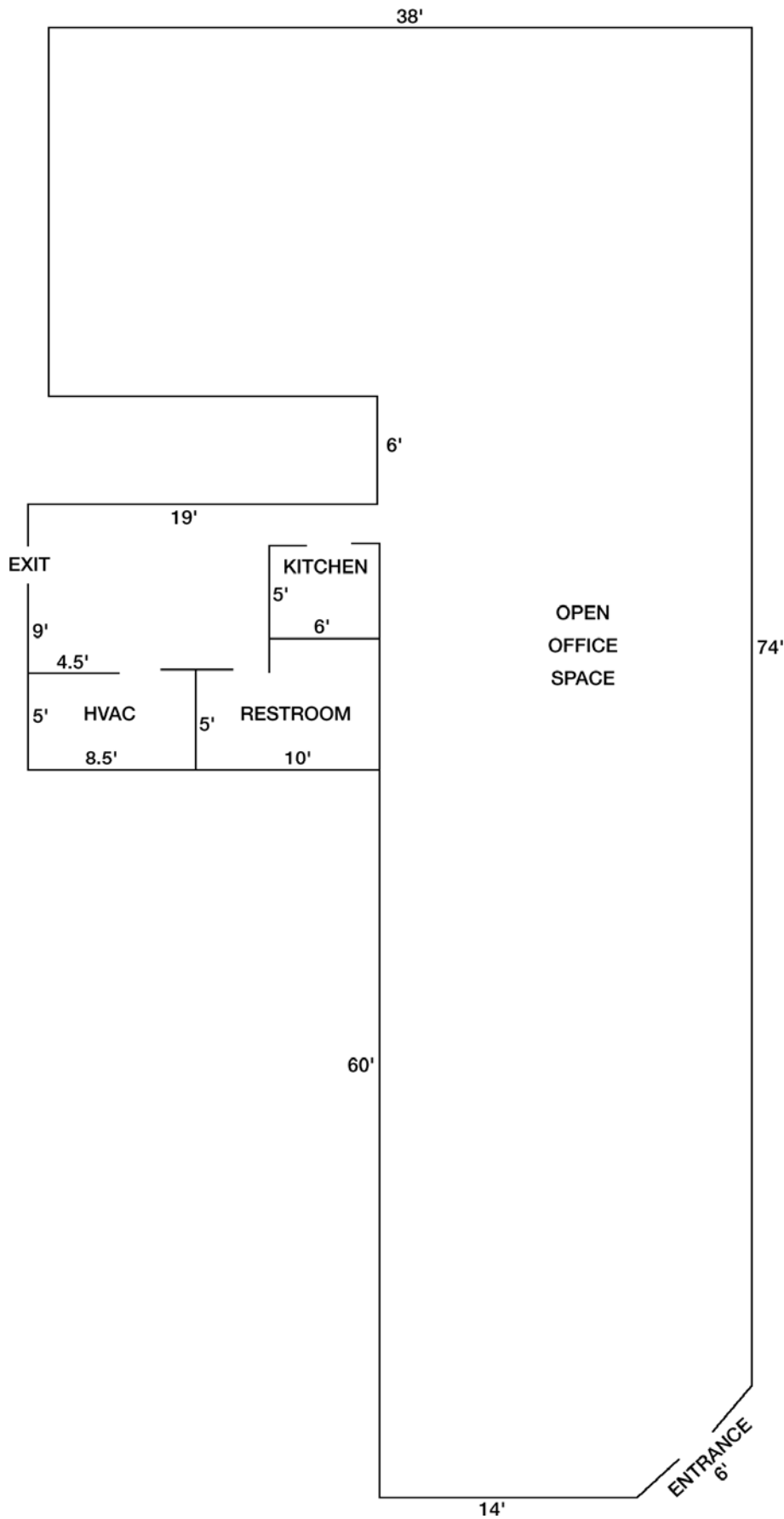


Commercial Real Estate Services, Worldwide.

The information contained herein has been given to us by the owner of the property or other sources we deem reliable. We have no reason to doubt its accuracy, but we do not guarantee it. All information should be verified prior to purchase or lease.

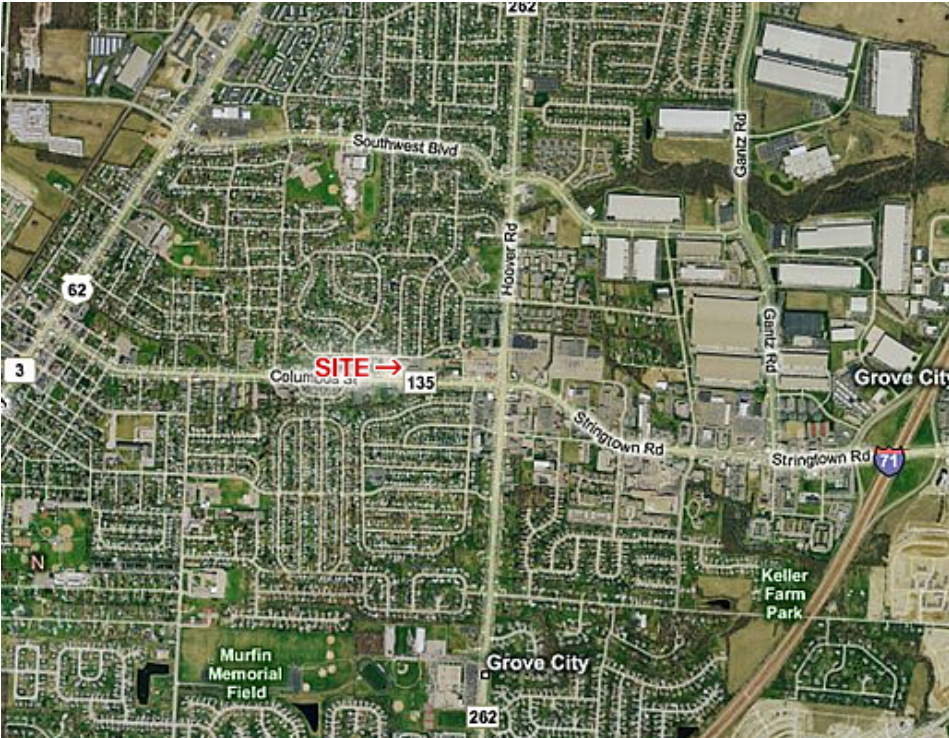
FLOORPLAN

2590 Columbus Street – Grove City, OH 43123



AERIAL IMAGERY & LOCATION MAPS

2590 Columbus Street – Grove City, OH 43123



contact information

Matt Gregory
 tel 614 629 5234
 mgregory@ohioequities.com

Andy Dutcher
 tel 614 629 5266
 adutcher@ohioequities.com



The information contained herein has been given to us by the owner of the property or other sources we deem reliable. We have no reason to doubt its accuracy, but we do not guarantee it. All information should be verified prior to purchase or lease.