

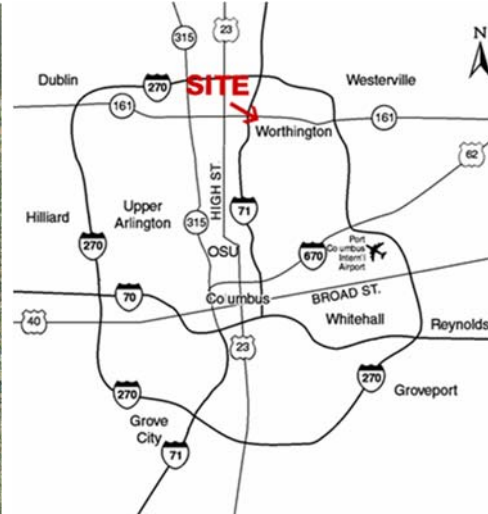
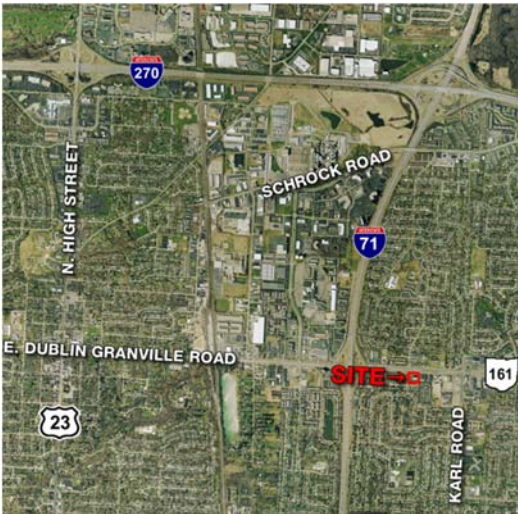
FOR LEASE OFFICE SPACE AVAILABLE

1395 E Dublin Granville Rd, Columbus, Ohio



PROPERTY DESCRIPTION

- 40,000 SF BUILDING SIZE
- SUITES RANGE FROM 420 SF UP TO 3,929 SF
- EASY ACCESS TO I-71
- ADA ACCESSIBLE
- AMENITIES NEARBY
- AMPLE PARKING
- HIGH SPEED INTERNET & PHONE SERVICE AVAILABLE
- \$11.00 / SF FSG



SUITE	± SF
109	420
111	935
200	1,000
310	1,141
350	2,788
310 + 350	3,929
409	960
420	2,290



For more information, go to:
www.amvetsbuilding.com

contact information
Matt Gregory
tel 614 629 5234
mgregory@ohioequities.com

Ben Layman
tel 614 629 5293
blayman@ohioequities.com

Main Office
605 S Front St Suite 200
Columbus, Ohio 43215
tel 614 224 2400
fax 614 224 5436
www.ohioequities.com

NAI Ohio Equities REALTORS®

Commercial Real Estate Services, Worldwide.

The information contained herein has been given to us by the owner of the property or other sources we deem reliable. We have no reason to doubt its accuracy, but we do not guarantee it. All information should be verified prior to purchase or lease.

BUILDING PHONE & INTERNET

1395 East Dublin Granville Rd, Columbus, Ohio

AMVETS Building Phone/Internet Rates

Phone Line and Base Phone	\$34.95
Each Additional Base Phone	\$10.00
Upgrade Phone	\$10.00
800 Number	\$10.00
Base Internet (includes up to 3 connections)	\$30.00
Unlimited Long Distance (over 3000 minutes .05/minute)	
Unlimited 800 Number (over 1000 minutes .05/minute)	

AMVETS Building Rate Calculation

# Lines	x \$34.95 =	
# Phones	x \$10.00 =	
# 800 Numbers	x \$10.00 =	
# Upgrades	x \$10.00 =	
911 Service Per Phone (required)	x \$3.00 =	
Base Internet	\$30.00	\$30.00
# of Additional Connections (Monthly Maximum of \$100)	x 10.00 =	
TOTAL		
Current Phone + Internet Monthly Payment		
Your Savings		

Advantages of AMVETS Building Phone System

- No system to purchase or lease
- No maintenance cost
- No phone purchase
- No router purchase
- High speed internet (5 MB Download)
- High speed wireless internet
- \$ savings
- No hidden fee increases
- No taxes
- No Federal Access charge
- No surcharges
- No Federal Regulatory fee
- No Universal Service fee

Features Include:

- Unlimited local calling
- Caller ID
- Call forwarding
- Call waiting
- Find me/Follow me
- Call transfer
- Auto attendant
- Dial by name directory
- Multiple extensions
- Hold music
- Call recording
- Conference bridge
- Visual voicemail

contact information

Matt Gregory
tel 614 629 5234
mgregory@ohioequities.com

Ben Layman
tel 614 629 5293
blayman@ohioequities.com

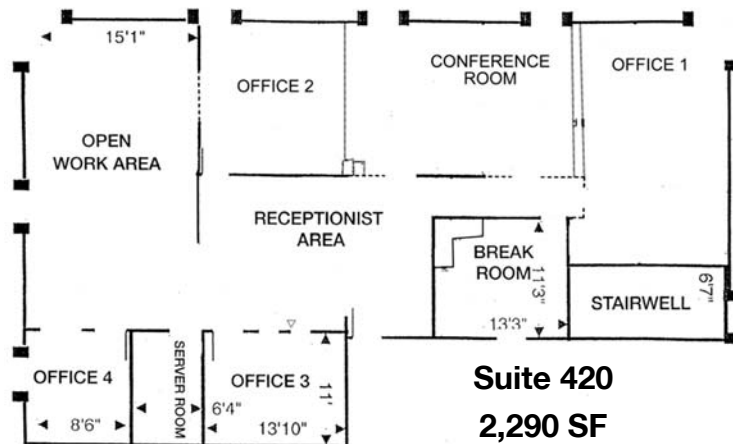
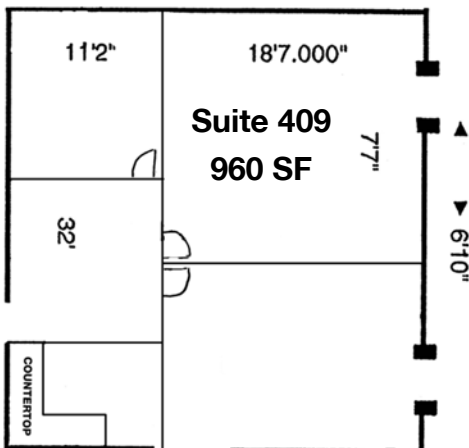
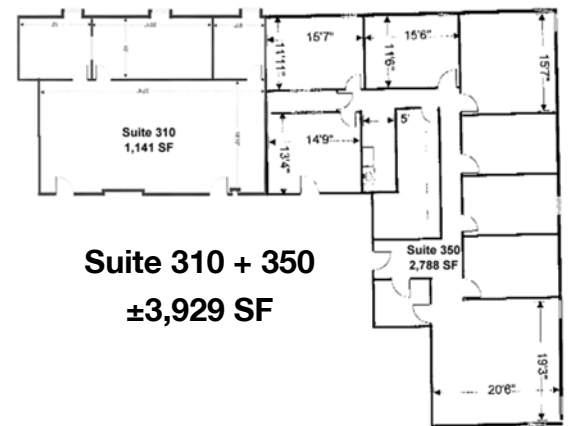
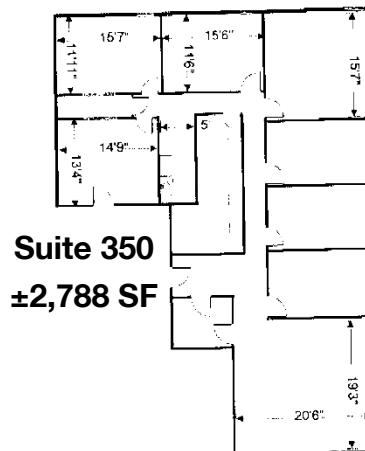
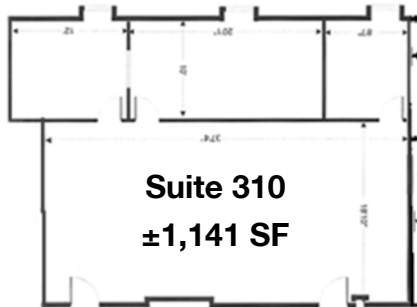
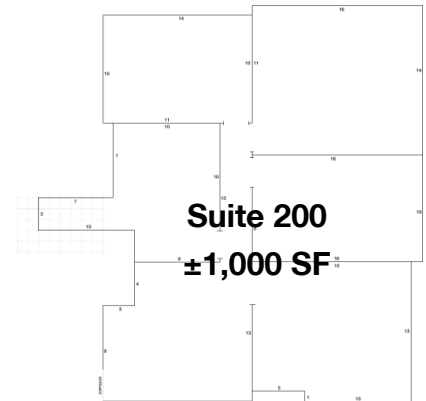
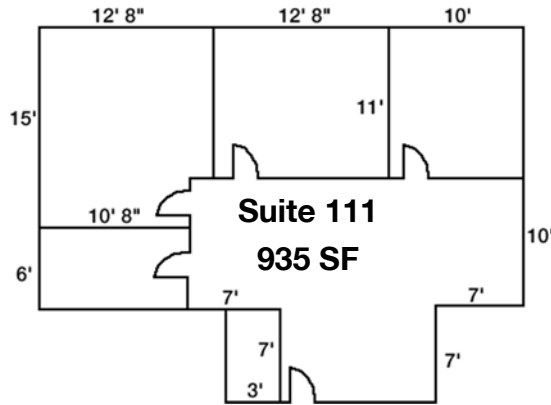
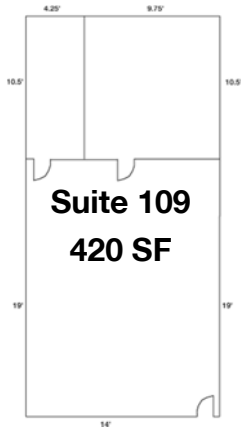
NAI Ohio Equities REALTORS®

Commercial Real Estate Services, Worldwide.

The information contained herein has been given to us by the owner of the property or other sources we deem reliable. We have no reason to doubt its accuracy, but we do not guarantee it. All information should be verified prior to purchase or lease.

FLOORPLANS

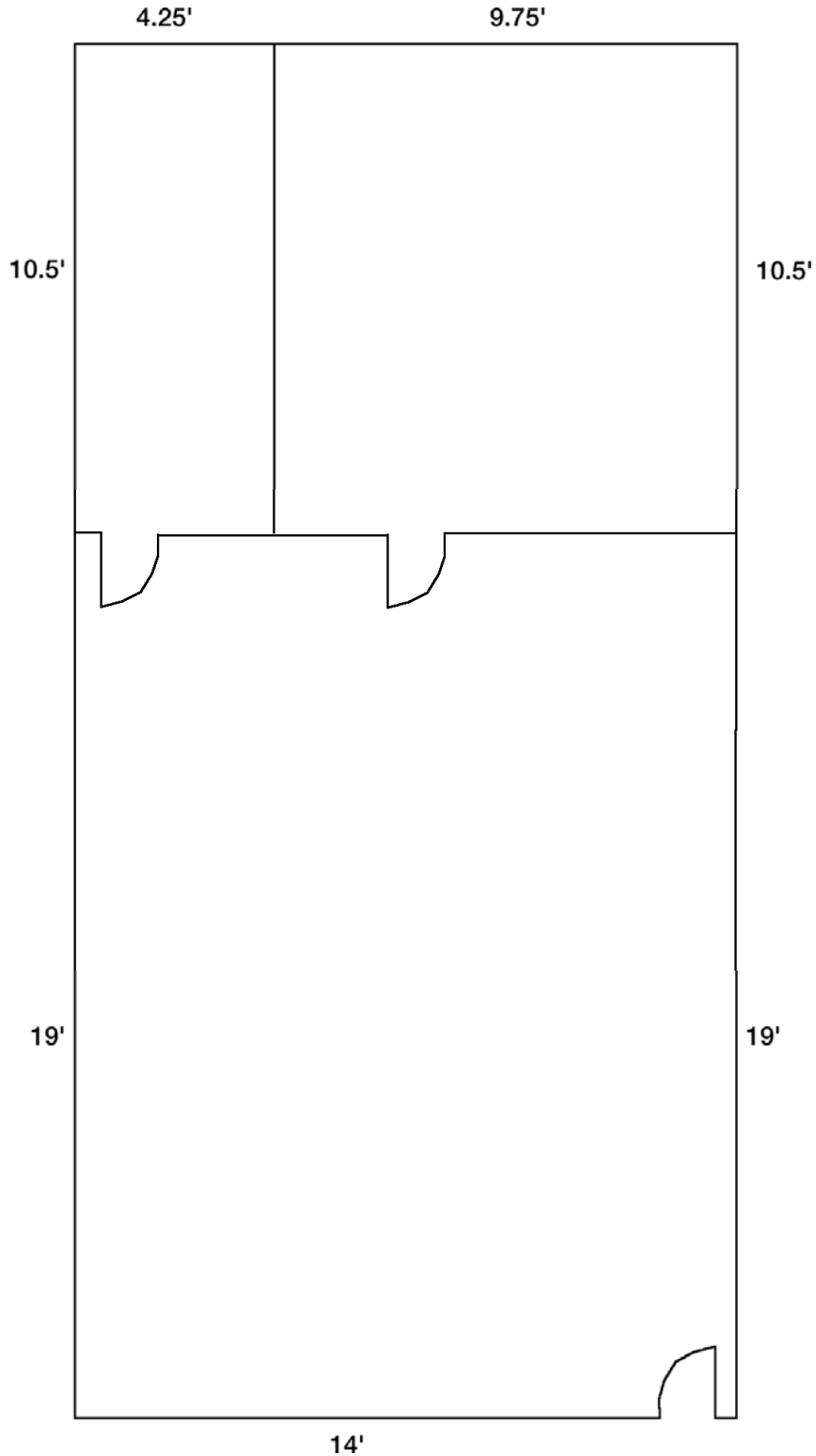
1395 East Dublin Granville Rd, Columbus, Ohio



FLOORPLAN – SUITE 109

1395 East Dublin Granville Rd, Columbus, Ohio

SUITE 109 420 SF



contact information

Matt Gregory
tel 614 629 5234
mgregory@ohioequities.com

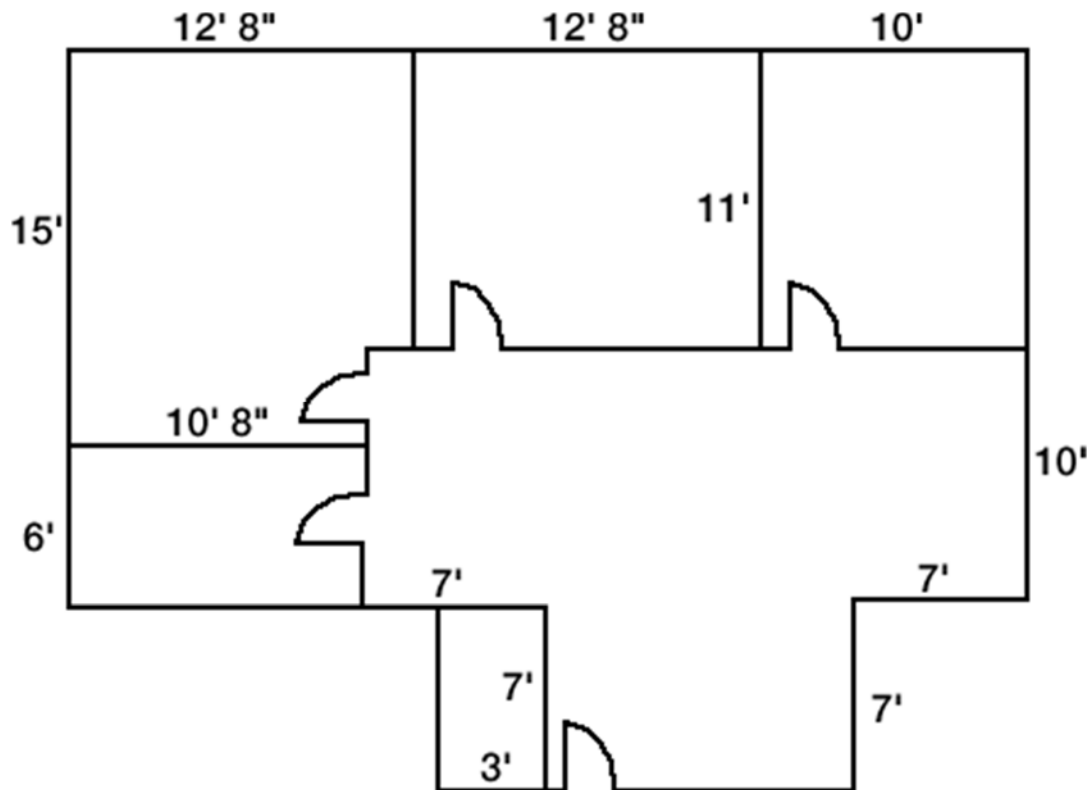
Ben Layman
tel 614 629 5293
blayman@ohioequities.com

FLOORPLAN – SUITE 111

1395 East Dublin Granville Rd, Columbus, Ohio

SUITE 111

935 SF



contact information

Matt Gregory
tel 614 629 5234
mgregory@ohioequities.com

Ben Layman
tel 614 629 5293
blayman@ohioequities.com

NAI Ohio Equities REALTORS®

Commercial Real Estate Services, Worldwide.

The information contained herein has been given to us by the owner of the property or other sources we deem reliable. We have no reason to doubt its accuracy, but we do not guarantee it. All information should be verified prior to purchase or lease.

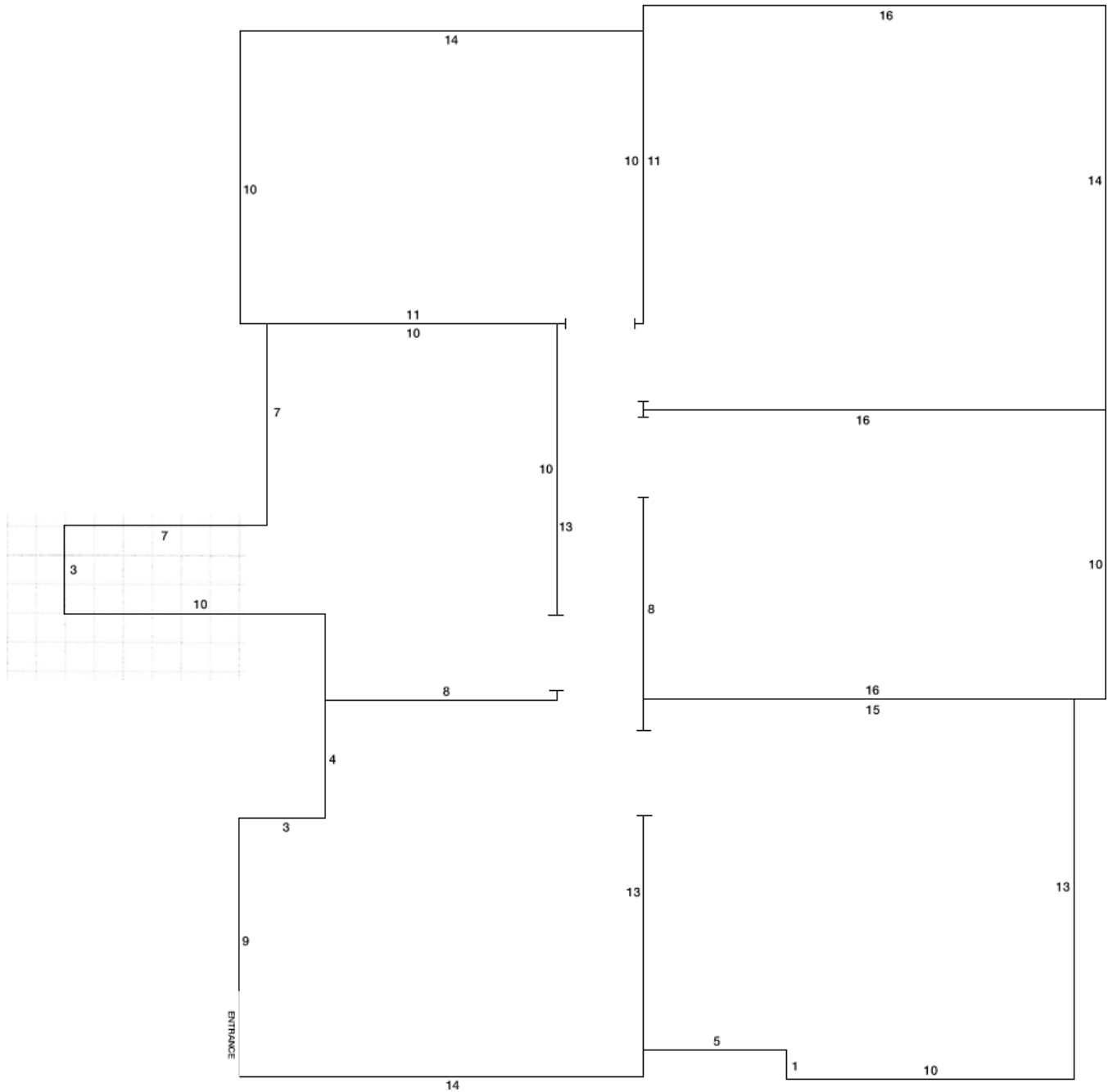
FLOORPLAN – SUITE 200

1395 East Dublin Granville Rd, Columbus, Ohio



SUITE 200 ±1,000 SF

1395 Dublin Granville Road
2nd Floor
Suite 200 - 1,000± SF

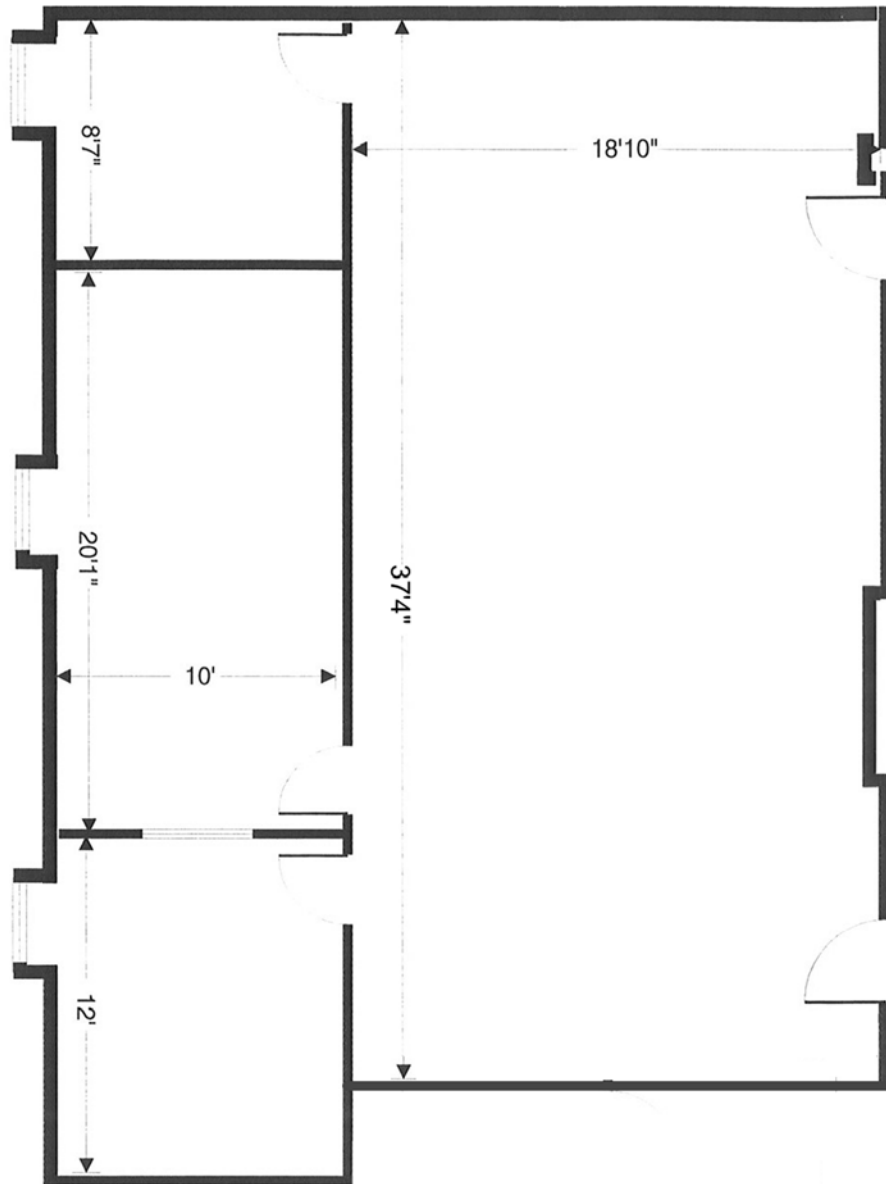


FLOORPLAN – SUITE 310

1395 East Dublin Granville Rd, Columbus, Ohio

SUITE 310

±1,141 SF



contact information

Matt Gregory
tel 614 629 5234
mgregory@ohioequities.com

Ben Layman
tel 614 629 5293
blayman@ohioequities.com

NAI Ohio Equities^{REALTORS®}

Commercial Real Estate Services, Worldwide.

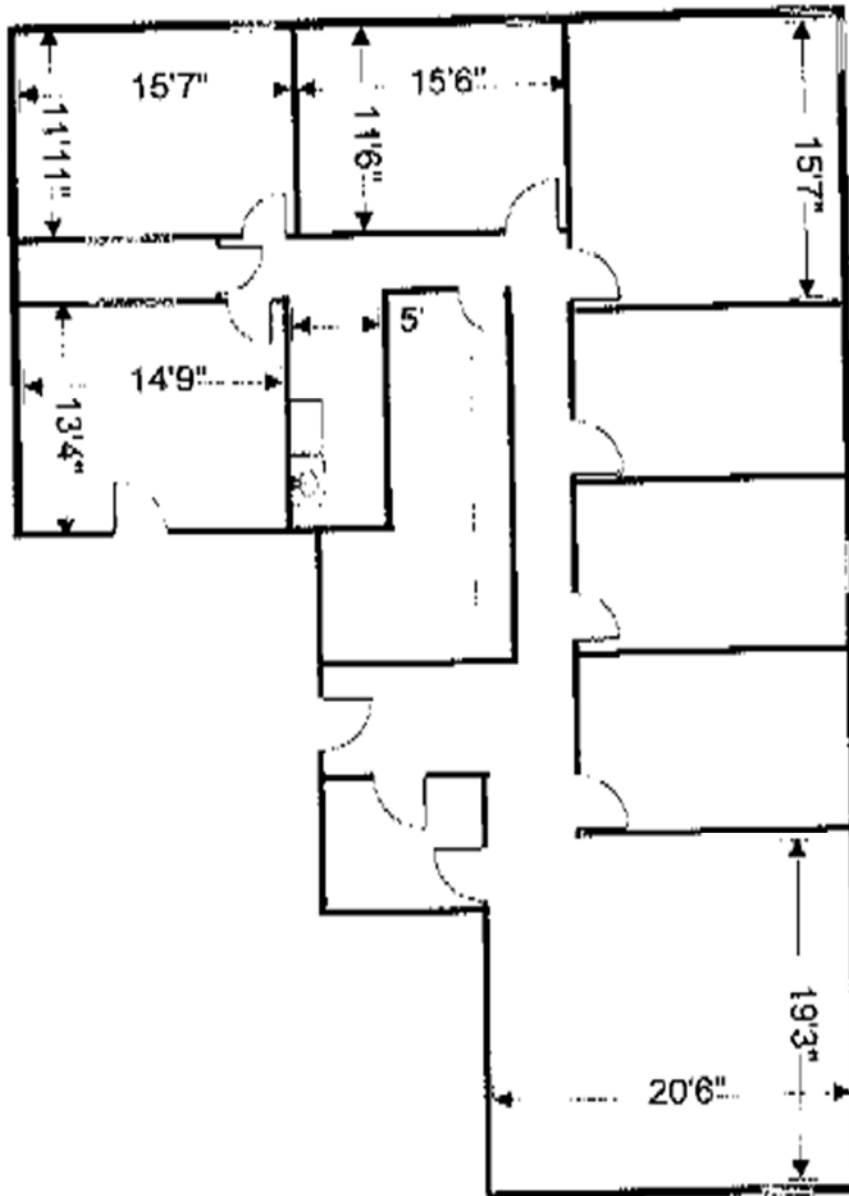
The information contained herein has been given to us by the owner of the property or other sources we deem reliable. We have no reason to doubt its accuracy, but we do not guarantee it. All information should be verified prior to purchase or lease.

FLOORPLAN – SUITE 350

1395 East Dublin Granville Rd, Columbus, Ohio

SUITE 350

±2,788 SF



contact information

Matt Gregory
tel 614 629 5234
mgregory@ohioequities.com

Ben Layman
tel 614 629 5293
blayman@ohioequities.com

NAI Ohio Equities^{REALTORS®}
Commercial Real Estate Services, Worldwide.

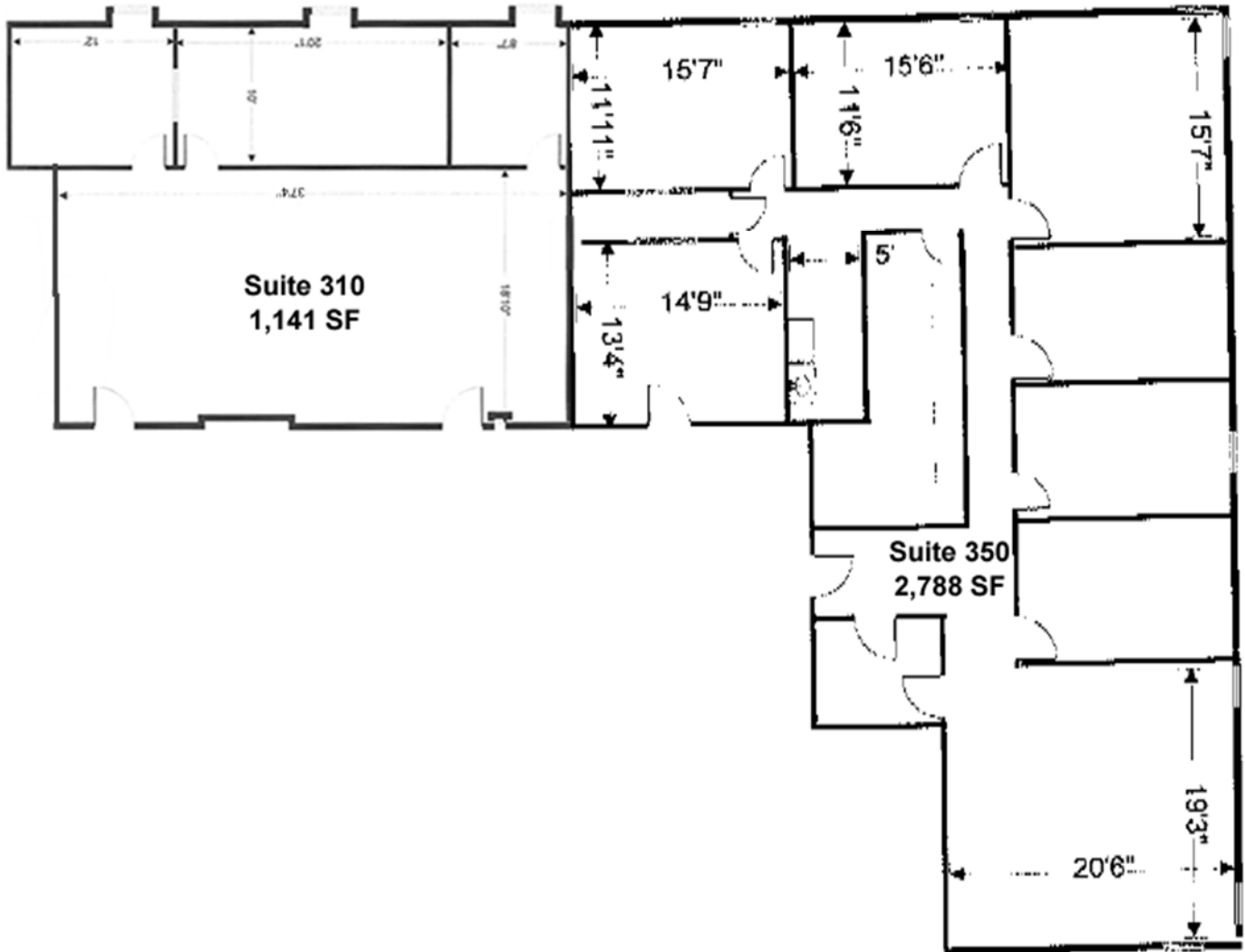
The information contained herein has been given to us by the owner of the property or other sources we deem reliable. We have no reason to doubt its accuracy, but we do not guarantee it. All information should be verified prior to purchase or lease.

FLOORPLAN – SUITE 310 + 350

1395 East Dublin Granville Rd, Columbus, Ohio

SUITE 310 + 350

±3,929 SF



contact information

Matt Gregory
tel 614 629 5234
mgregory@ohioequities.com

Ben Layman
tel 614 629 5293
blayman@ohioequities.com

NAI Ohio Equities REALTORS®

Commercial Real Estate Services, Worldwide.

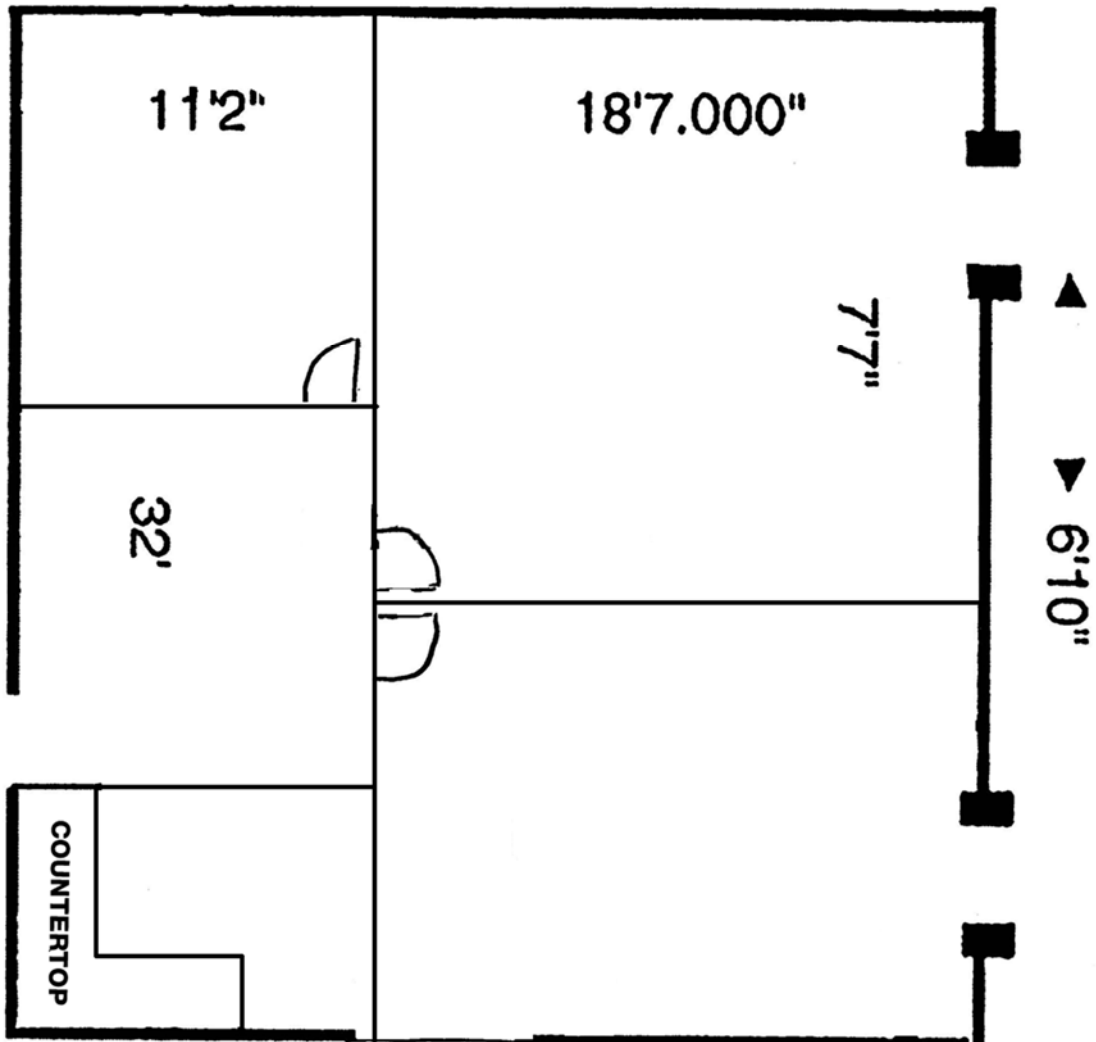
The information contained herein has been given to us by the owner of the property or other sources we deem reliable. We have no reason to doubt its accuracy, but we do not guarantee it. All information should be verified prior to purchase or lease.

FLOORPLAN – SUITE 409

1395 East Dublin Granville Rd, Columbus, Ohio

SUITE 409

960 SF



contact information

Matt Gregory
tel 614 629 5234
mgregory@ohioequities.com

Ben Layman
tel 614 629 5293
blayman@ohioequities.com



Commercial Real Estate Services, Worldwide.

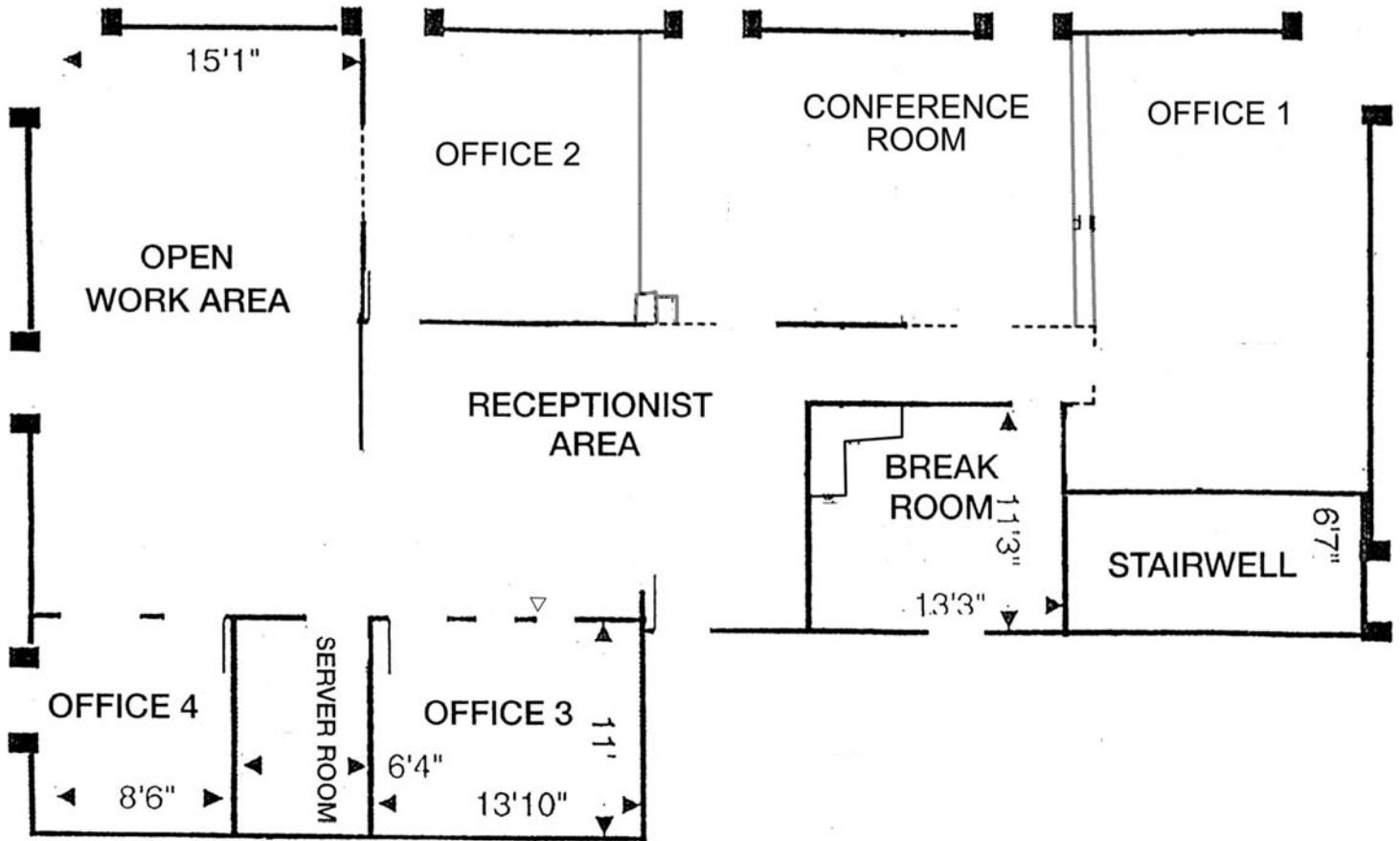
The information contained herein has been given to us by the owner of the property or other sources we deem reliable. We have no reason to doubt its accuracy, but we do not guarantee it. All information should be verified prior to purchase or lease.

FLOORPLAN – SUITE 420

1395 East Dublin Granville Rd, Columbus, Ohio

SUITE 420

2,290 SF



Commercial Real Estate Services, Worldwide.

The information contained herein has been given to us by the owner of the property or other sources we deem reliable. We have no reason to doubt its accuracy, but we do not guarantee it. All information should be verified prior to purchase or lease.

contact information

Matt Gregory
tel 614 629 5234
mgregory@ohioequities.com

Ben Layman
tel 614 629 5293
blayman@ohioequities.com