



**FOR LEASE**

## **OFFICE SPACE AVAILABLE**

5900 Sharon Woods Blvd. – Columbus, OH 43229



### **PROPERTY DESCRIPTION**

- 6,400 SF BUILDING
- SUITE D – 484 SF AVAILABLE
- NICE BUILDING OFF SR 161
- WELL MAINTAINED BUILDING WITH OWNERSHIP POSSIBILITIES
- CLOSE TO SCHOOLS, RESTAURANTS AND BUSINESSES
- SUITE HAS TWO OFFICES AND A RECEPTION AREA

**LEASE RATE \$12.00 PSF FSG**

**NAI** Ohio Equities<sup>REALTORS®</sup>

Commercial Real Estate Services, Worldwide.

The information contained herein has been given to us by the owner of the property or other sources we deem reliable. We have no reason to doubt its accuracy, but we do not guarantee it. All information should be verified prior to purchase or lease.

#### **contact information**

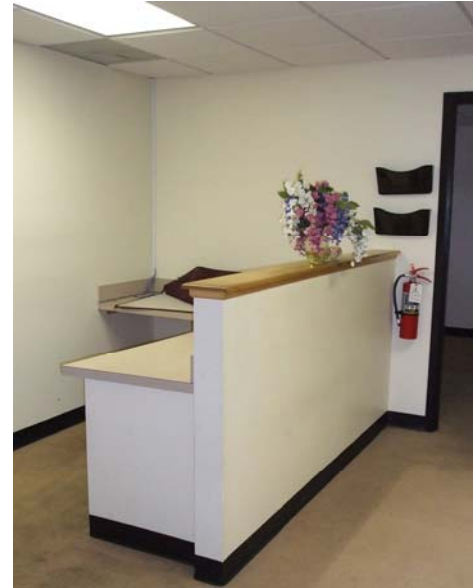
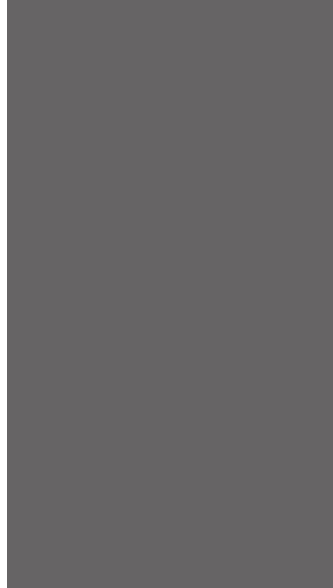
**Mark Francescon** | 614 629 5264  
mfrancescon@ohioequities.com

#### **Main Office**

605 S Front St Suite 200  
Columbus, Ohio 43215  
tel 614 224 2400 | fax 614 224 5436  
www.ohioequities.com

# PROPERTY PHOTOGRAPHS

5900 Sharon Woods Blvd. – Columbus, OH 43229



**NAI** Ohio Equities<sup>REALTORS®</sup>  
Commercial Real Estate Services, Worldwide.

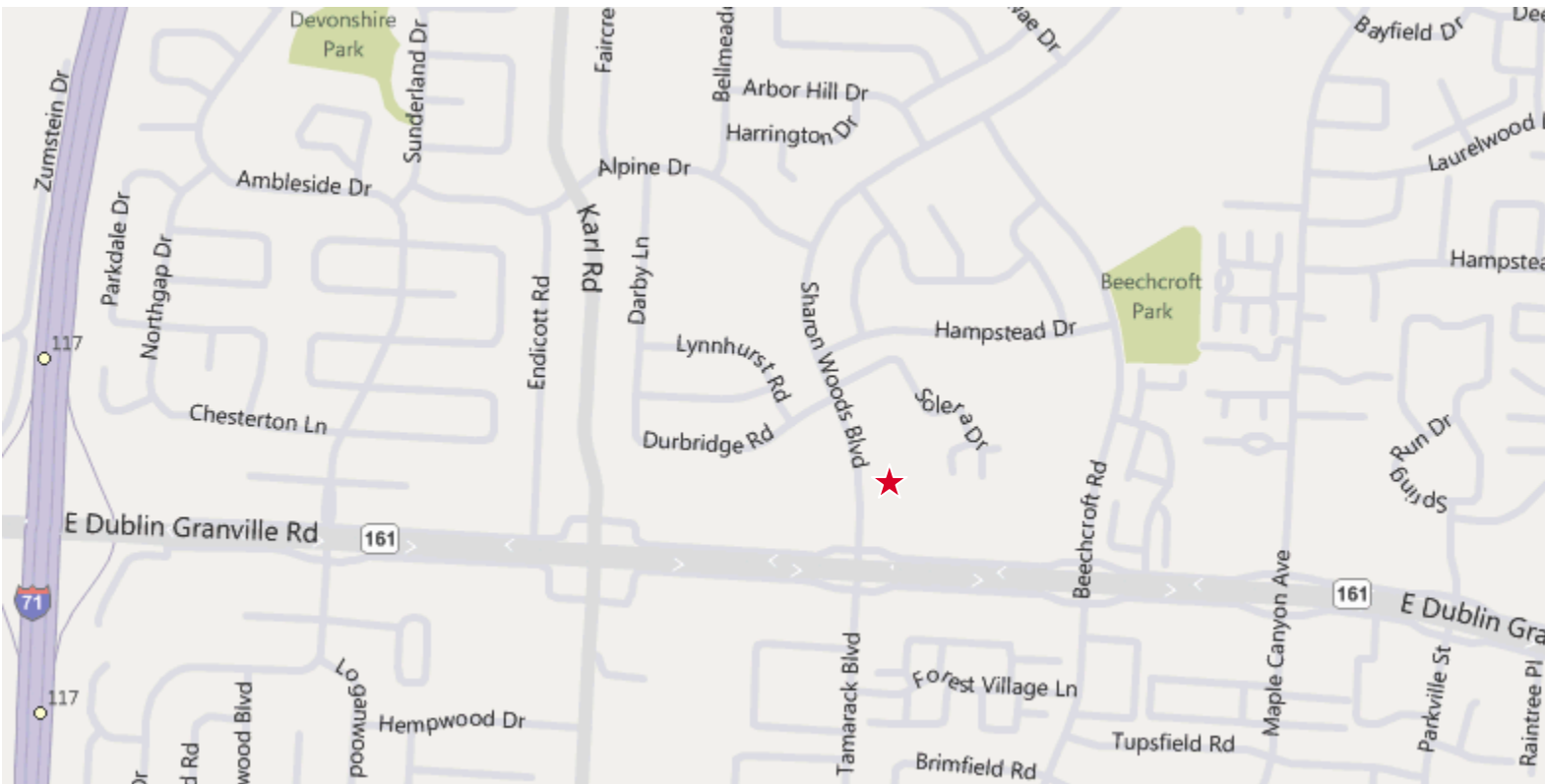
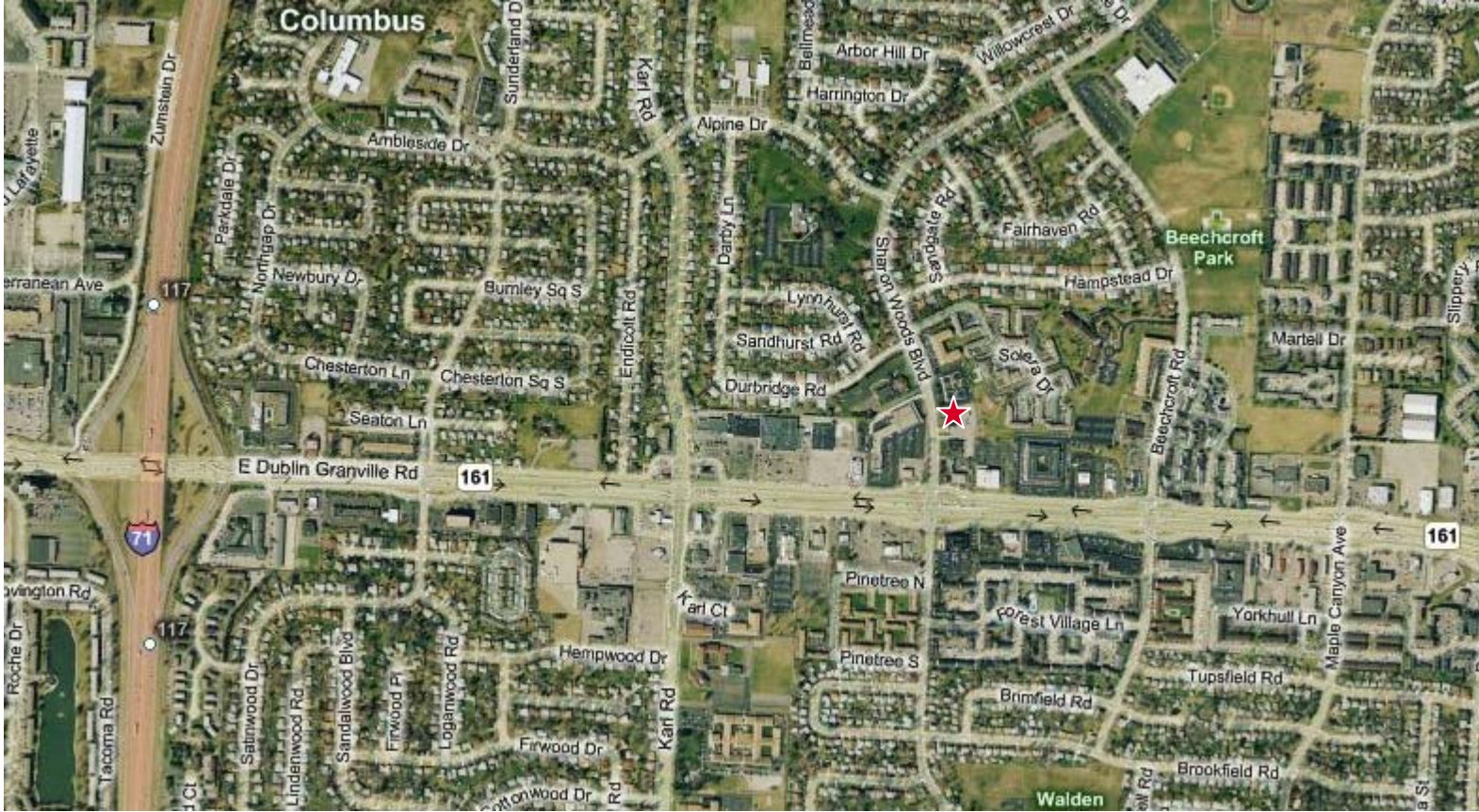
The information contained herein has been given to us by the owner of the property or other sources we deem reliable. We have no reason to doubt its accuracy, but we do not guarantee it. All information should be verified prior to purchase or lease.

## contact information

Mark Francescon | 614 629 5264  
mfrancescon@ohioequities.com

# AERIAL IMAGERY & LOCATION MAP

5900 Sharon Woods Blvd. – Columbus, OH 43229



**NAI** Ohio Equities<sup>®</sup> REALTORS<sup>®</sup>

Commercial Real Estate Services, Worldwide.

The information contained herein has been given to us by the owner of the property or other sources we deem reliable. We have no reason to doubt its accuracy, but we do not guarantee it. All information should be verified prior to purchase or lease.

contact information

Mark Francescon | 614 629 5264

mfrancescon@ohioequities.com