

PRICE REDUCED!!!



FOR SALE OR LEASE INDUSTRIAL BUILDING

2055 Refugee Road – Columbus, OH 43207



- 42,600 SF MULTIPURPOSE WAREHOUSE / MANU. BLDG.
- EXCELLENT LOCATION ON REFUGEE ROAD
- 20' – 22' CLEAR HEIGHT
- CLOSE TO STATE ROUTE 104 & ALUM CREEK
- HEAVY POWER & RAIL SERVED
- 5± ACRES OF M ZONED LAND
- BILLBOARD SIGN ON-SITE GENERATING INCOME
- OWNER/USER/TENANT SPACE - UNDER \$16.30 PSF

SALE PRICE \$650,000
LEASE RATE \$1.50 PSF MG

Jim Merkel SIOR, CCIM | tel 614 629 5214
jmerkel@ohioequities.com

Mike Semon | tel 614 629 5217
mjsemon@ohioequities.com

Dan Sheeran | tel 614 629 5216
dsheeran@ohioequities.com

NAI Ohio Equities^{REALTORS®}

Commercial Real Estate Services, Worldwide.

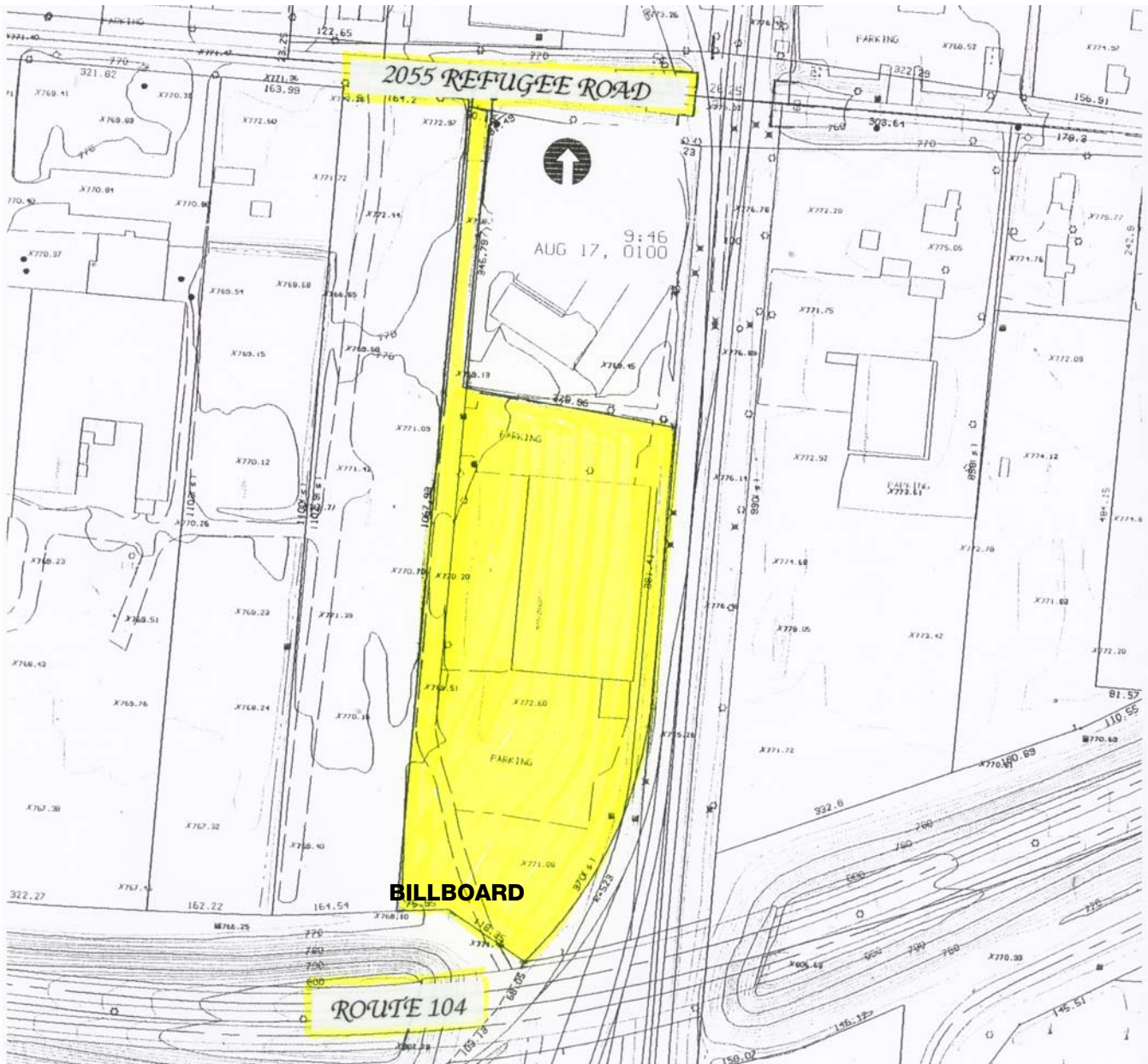
The information contained herein has been given to us by the owner of the property or other sources we deem reliable. We have no reason to doubt its accuracy, but we do not guarantee it. All information should be verified prior to purchase or lease.

Main Office

605 S Front St Suite 200
Columbus, Ohio 43215
tel 614 224 2400 | fax 614 224 5436
www.ohioequities.com

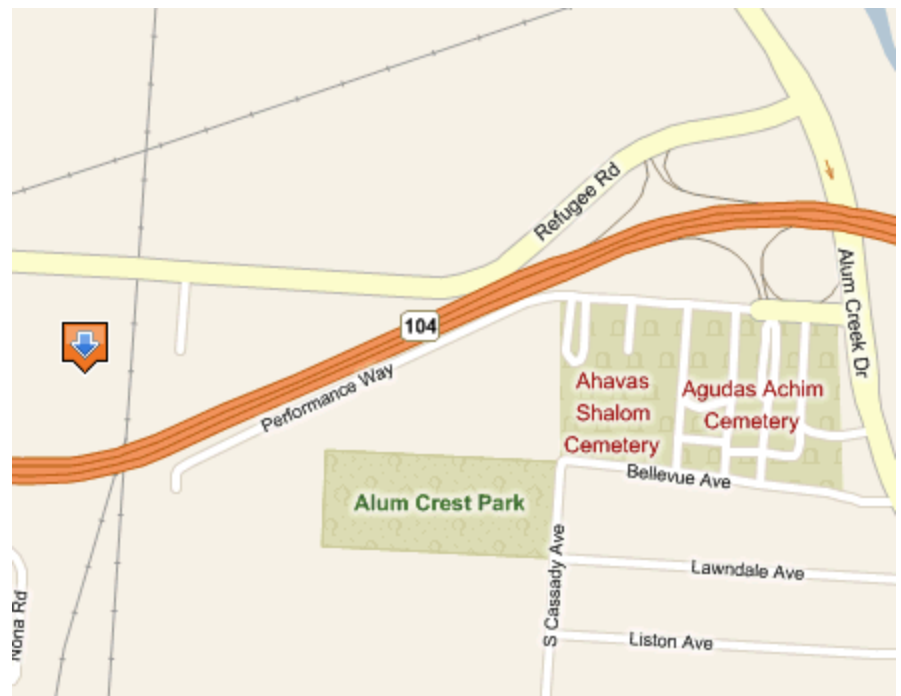
SITEPLAN

2055 Refugee Road – Columbus, OH 43207



AERIAL IMAGERY & LOCATION MAP

2055 Refugee Road – Columbus, OH 43207



The information contained herein has been given to us by the owner of the property or other sources we deem reliable. We have no reason to doubt its accuracy, but we do not guarantee it. All information should be verified prior to purchase or lease.

Jim Merkel SIOR, CCIM | tel 614 629 5214
jmerkel@ohioequities.com

Mike Semon | tel 614 629 5217
mjsemon@ohioequities.com

Dan Sheeran | tel 614 629 5216
dsheeran@ohioequities.com