



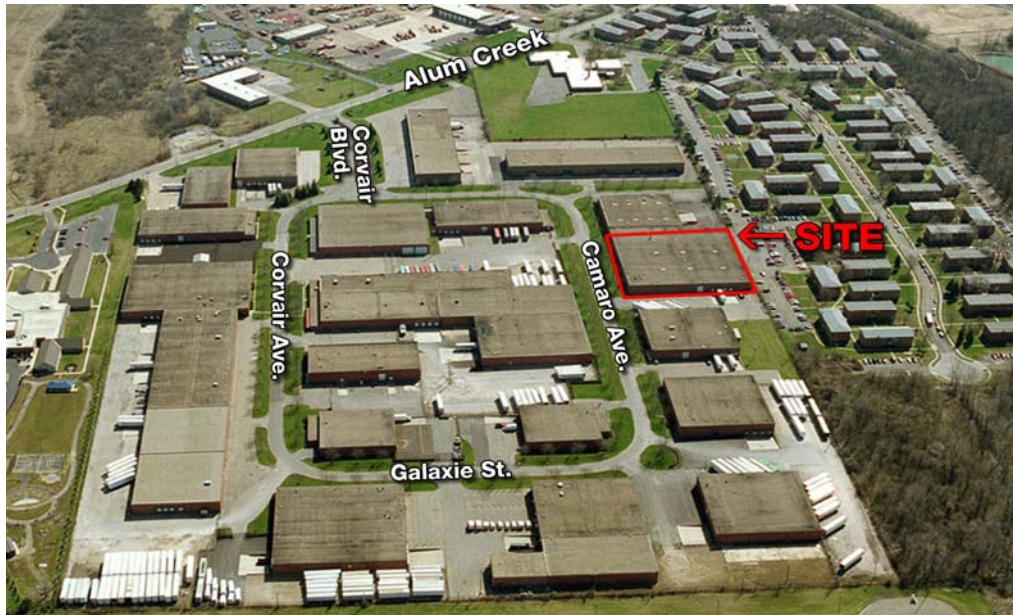
# OFFICE / WAREHOUSE SPACE FOR LEASE

2025 Camaro Ave., Columbus, OH 43207

## PROPERTY DESCRIPTION

- 97,375 SF BUILDING
- 50,405 SF AVAILABLE FOR LEASE
- BAY SIZE 40' X 50'
- 4 DOCKS
- ONE DRIVE-IN (12' X 14')
- 18' CLEAR HEIGHT
- WET SPRINKLER SYSTEM
- ZONING – M (CITY OF COLUMBUS)
- AMPLE PARKING SPACES
- GOOD CLEAN BUILDING. 3 PHASE ELECTRIC POWER. SHORT TERM LEASE AVAILABLE

**LEASE RATE \$1.95 PSF GROSS**



### contact information

**Curt Berlin**  
tel 614 629 5221  
cberlin@ohioequities.com

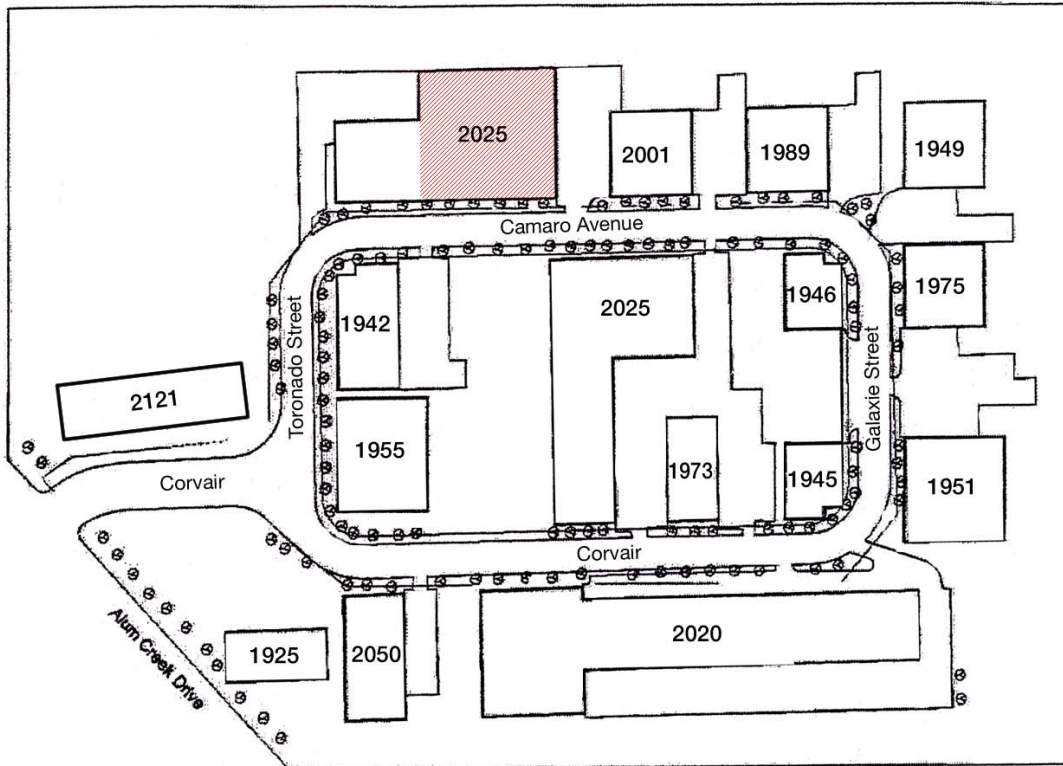
**Main Office**  
605 S Front St Suite 200  
Columbus, Ohio 43215  
tel 614 224 2400 | fax 614 224 5436  
www.ohioequities.com

**NAI** Ohio Equities<sup>REALTORS®</sup>  
Commercial Real Estate Services, Worldwide.

The information contained herein has been given to us by the owner of the property or other sources we deem reliable. We have no reason to doubt its accuracy, but we do not guarantee it. All information should be verified prior to purchase or lease.

# SOUTHEAST INDUSTRIAL PARK

2025 Camaro Ave., Columbus, OH 43207



## SOUTHEAST INDUSTRIAL PARK

1951	40,460 SF
1975	40,225 SF
1925	20,000 SF
1955/200	24,580 SF
1945	16,090 SF
1973	20,950 SF
2020	139,966 SF
2025	123,000 SF
3050	29,473 SF
2055	50,000 SF
2121	80,000 SF
1946	16,090 SF
1989 & 1949	28,081 SF
2001	52,163 SF
2025	56,165 SF
2025A	34,515 SF
2042	28,756 SF
<b>Total Building Area</b>	<b>799,614 SF</b>

**NAI** Ohio Equities<sup>REALTORS®</sup>

Commercial Real Estate Services, Worldwide.

The information contained herein has been given to us by the owner of the property or other sources we deem reliable. We have no reason to doubt its accuracy, but we do not guarantee it. All information should be verified prior to purchase or lease.

### contact information

Curt Berlin SIOR  
tel 614 629 5221  
cberlin@ohioequities.com