



INDUSTRIAL MFG./WHS. SPACE FOR SALE OR LEASE

3900 Groves Road – Columbus, OH 43232

PROPERTY DESCRIPTION

- 70,000 SF FREESTANDING MANUFACTURING/WAREHOUSE
- UNIT 2 – 15,000 SF AVAILABLE
- 15,000 TO 70,182 SF MINIMUM AND MAXIMUM MANUFACTURING/WAREHOUSE SPACE
- INTERSTATE EXPOSURE & RAIL
- HEAVY POWER WITH CRANES
- TWO DOCK DOORS
- ONE DRIVE-IN DOOR
- 18' CLEAR HEIGHT
- 3 PHASE ELECTRIC
- ALL OR PART
- 20,000 SF OR MORE LEASED IS \$.99/PSF

SALE PRICE \$1,650,000
RATE \$.99-\$2.65 PSF GROSS



Rear View



contact information

Dan Sheeran
tel 614 629 5216
dsheeran@ohioequities.com

Mike Semon
tel 614 629 5217
mjsemon@ohioequities.com

Main Office
605 S Front St Suite 200
Columbus, Ohio 43215
tel 614 224 2400
fax 614 224 5436
www.ohioequities.com

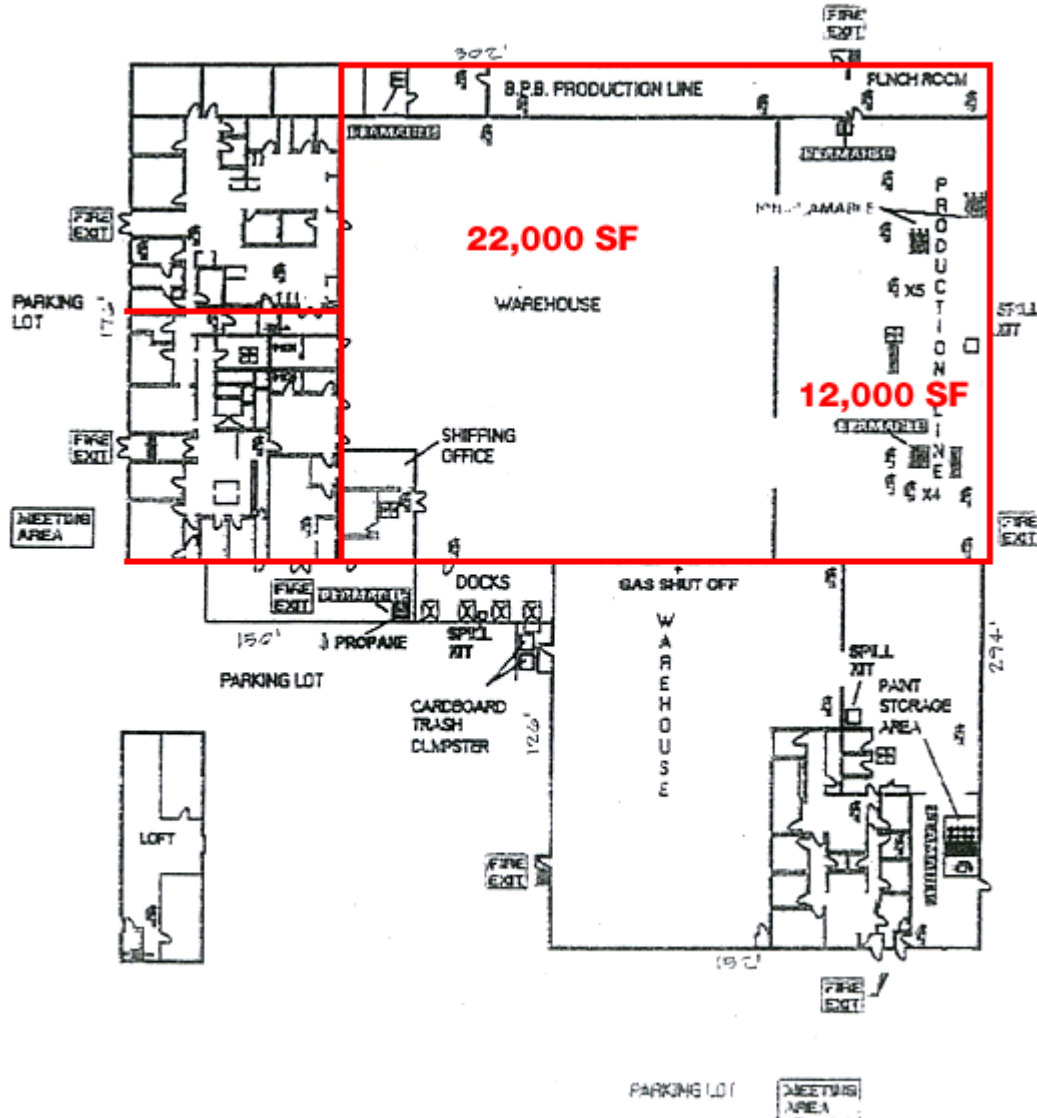


Commercial Real Estate Services, Worldwide.

The information contained herein has been given to us by the owner of the property or other sources we deem reliable. We have no reason to doubt its accuracy, but we do not guarantee it. All information should be verified prior to purchase or lease.

FLOORPLAN

3900 Groves Road – Columbus, OH 43232



Commercial Real Estate Services, Worldwide.

The information contained herein has been given to us by the owner of the property or other sources we deem reliable. We have no reason to doubt its accuracy, but we do not guarantee it. All information should be verified prior to purchase or lease.

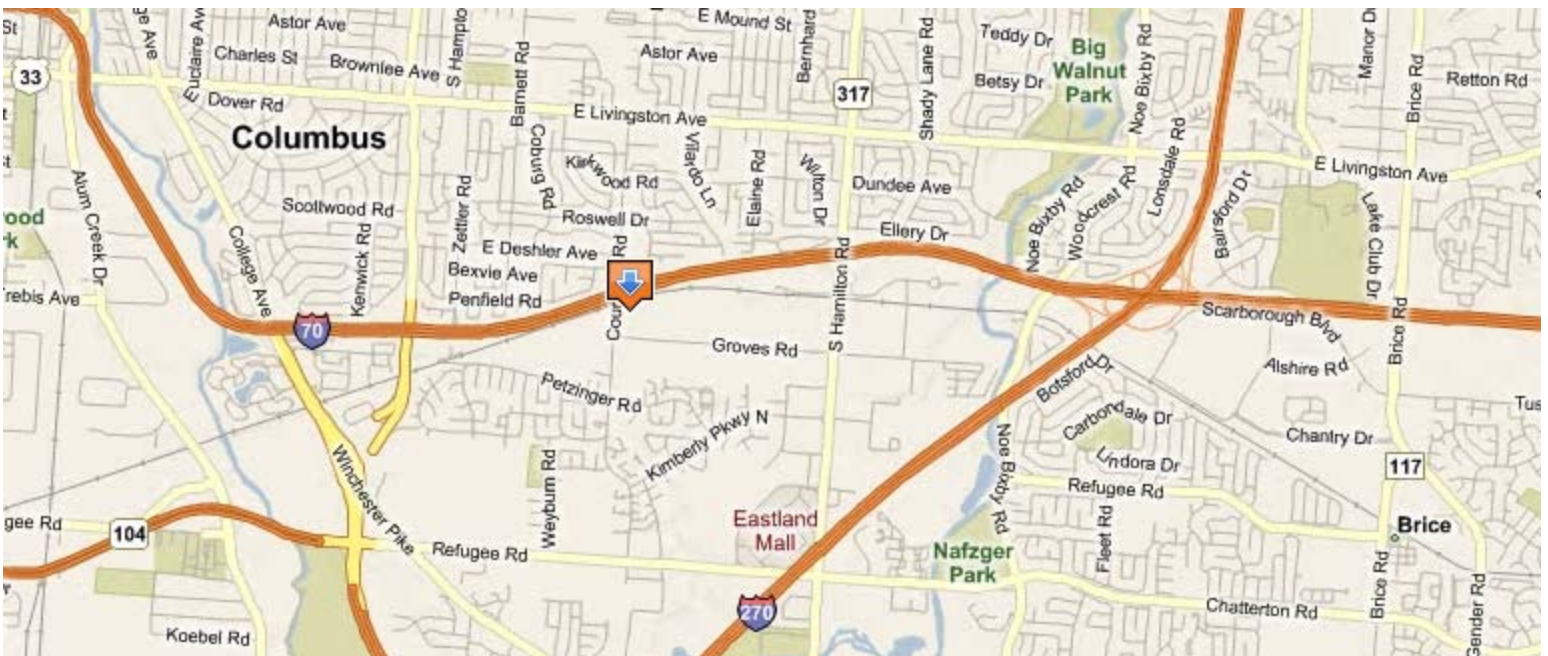
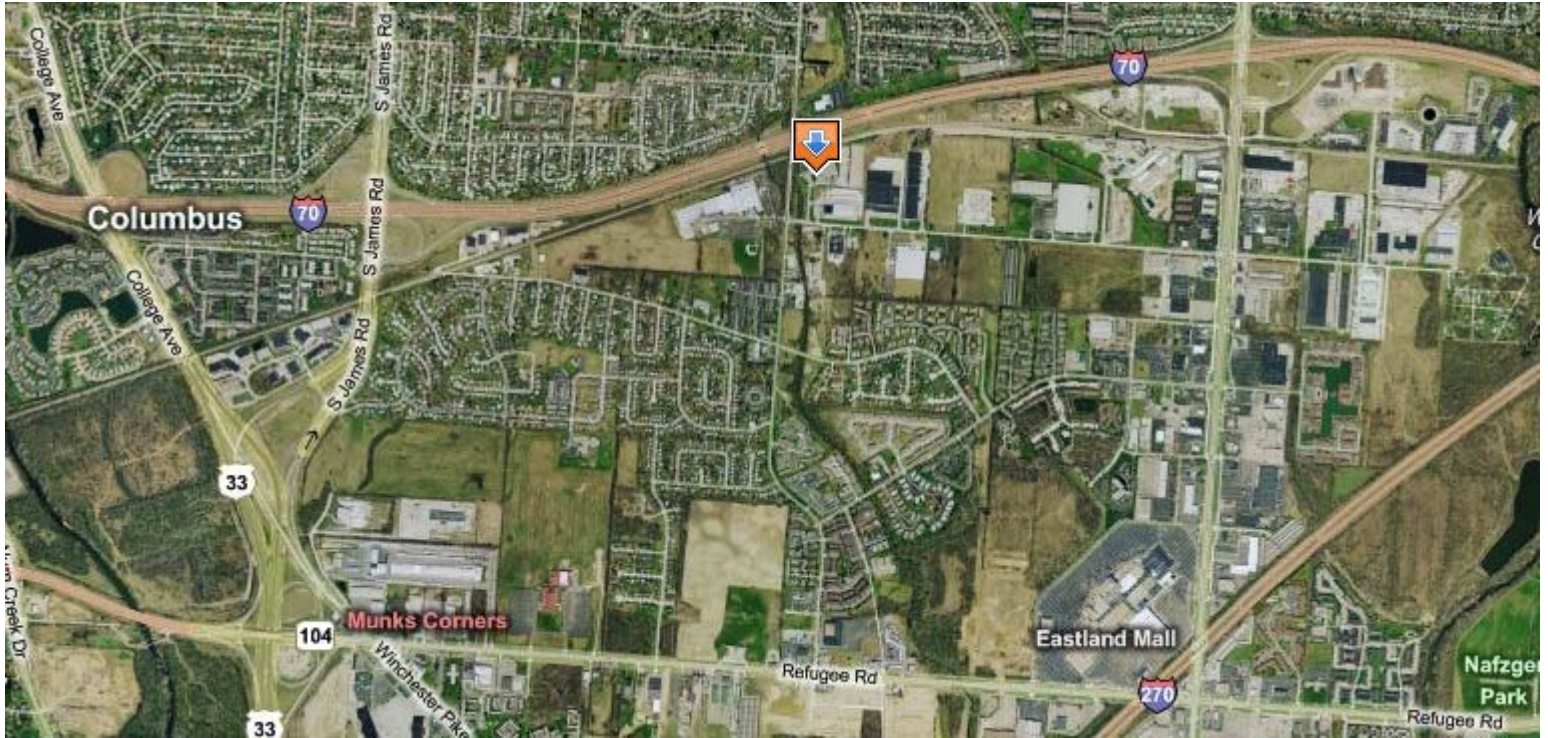
contact information

Dan Sheeran
tel 614 629 5216
dsheeran@ohioequities.com

Mike Semon
tel 614 629 5217
mjsemon@ohioequities.com

AERIAL IMAGERY & LOCATION MAP

3900 Groves Road – Columbus, OH 43232



NAI Ohio Equities REALTORS[®]

Commercial Real Estate Services, Worldwide.

The information contained herein has been given to us by the owner of the property or other sources we deem reliable. We have no reason to doubt its accuracy, but we do not guarantee it. All information should be verified prior to purchase or lease.

contact information

Dan Sheeran
tel 614 629 5216
dsheeran@ohioequities.com

Mike Semon
tel 614 629 5217
mjsemon@ohioequities.com