



INDUSTRIAL BUILDING / WAREHOUSE SPACE FOR LEASE

1513 Alum Creek Drive – Columbus, OH 43209

PROPERTY DESCRIPTION

- 26,000 SF FREESTANDING BUILDING
- AIR CONDITIONED OFFICE
- LOCATED NEXT TO I-70 WITH ALUM CREEK EXPOSURE
- TWO DOCK DOORS
- ONE DRIVE-IN DOOR
- 20' CLEAR HEIGHT
- 3 PHASE ELECTRIC

LEASE RATE \$2.50 PSF GROSS



Commercial Real Estate Services, Worldwide.

The information contained herein has been given to us by the owner of the property or other sources we deem reliable. We have no reason to doubt its accuracy, but we do not guarantee it. All information should be verified prior to purchase or lease.

contact information

Dan Sheeran | tel 614 629 5216
dsheeran@ohioequities.com

Mike Semon | tel 614 629 5217
mjsemon@ohioequities.com

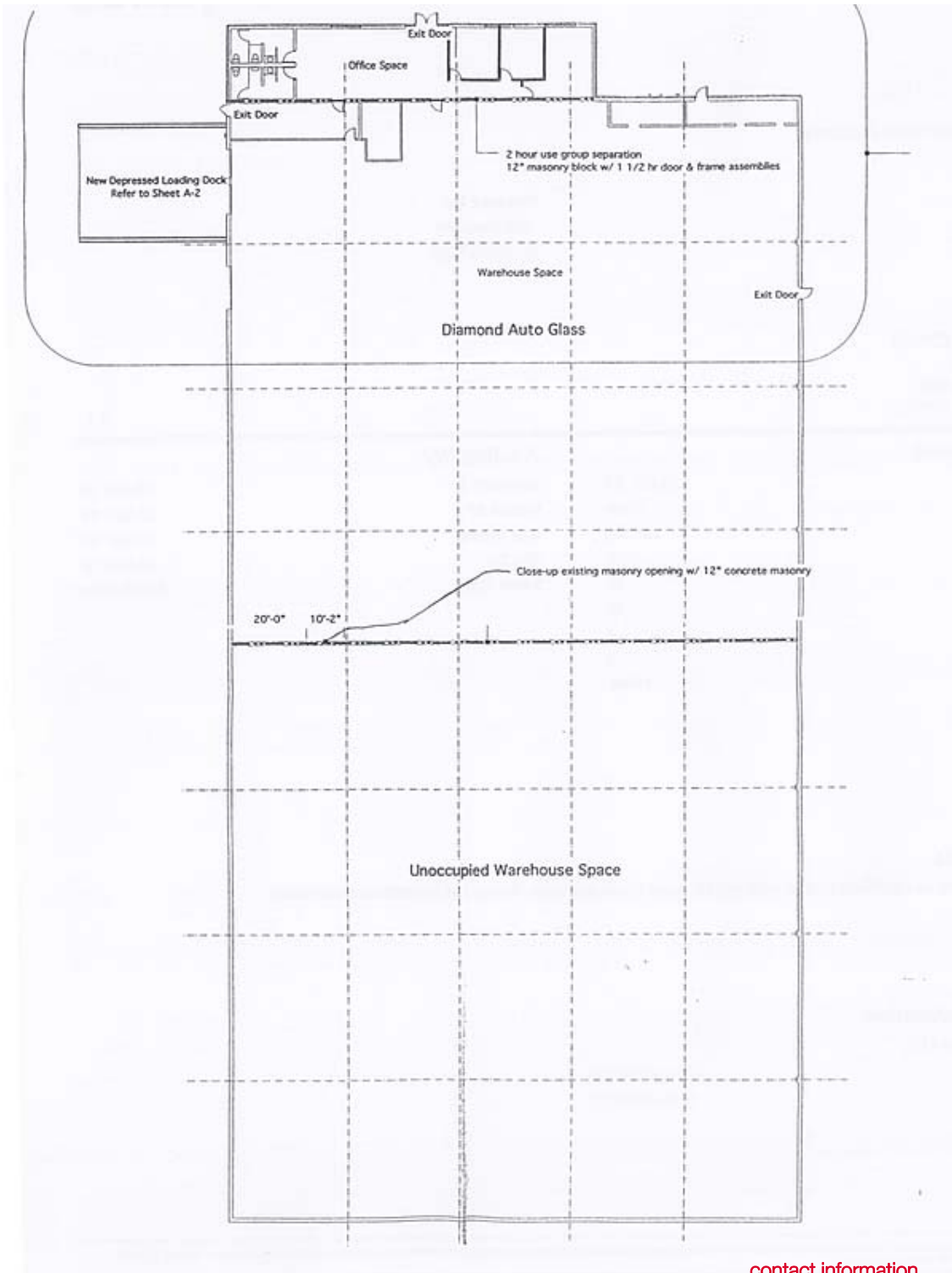
Ryan McGreevy | tel 614 629 5282
rmcgreevy@ohioequities.com

Main Office

605 S Front St Suite 200
Columbus, Ohio 43215
tel 614 224 2400 | fax 614 224 5436
www.ohioequities.com

FLOORPLAN

1513 Alum Creek Drive – Columbus, OH 43209



contact information

NAI Ohio Equities REALTORS®

Commercial Real Estate Services, Worldwide.

The information contained herein has been given to us by the owner of the property or other sources we deem reliable. We have no reason to doubt its accuracy, but we do not guarantee it. All information should be verified prior to purchase or lease.

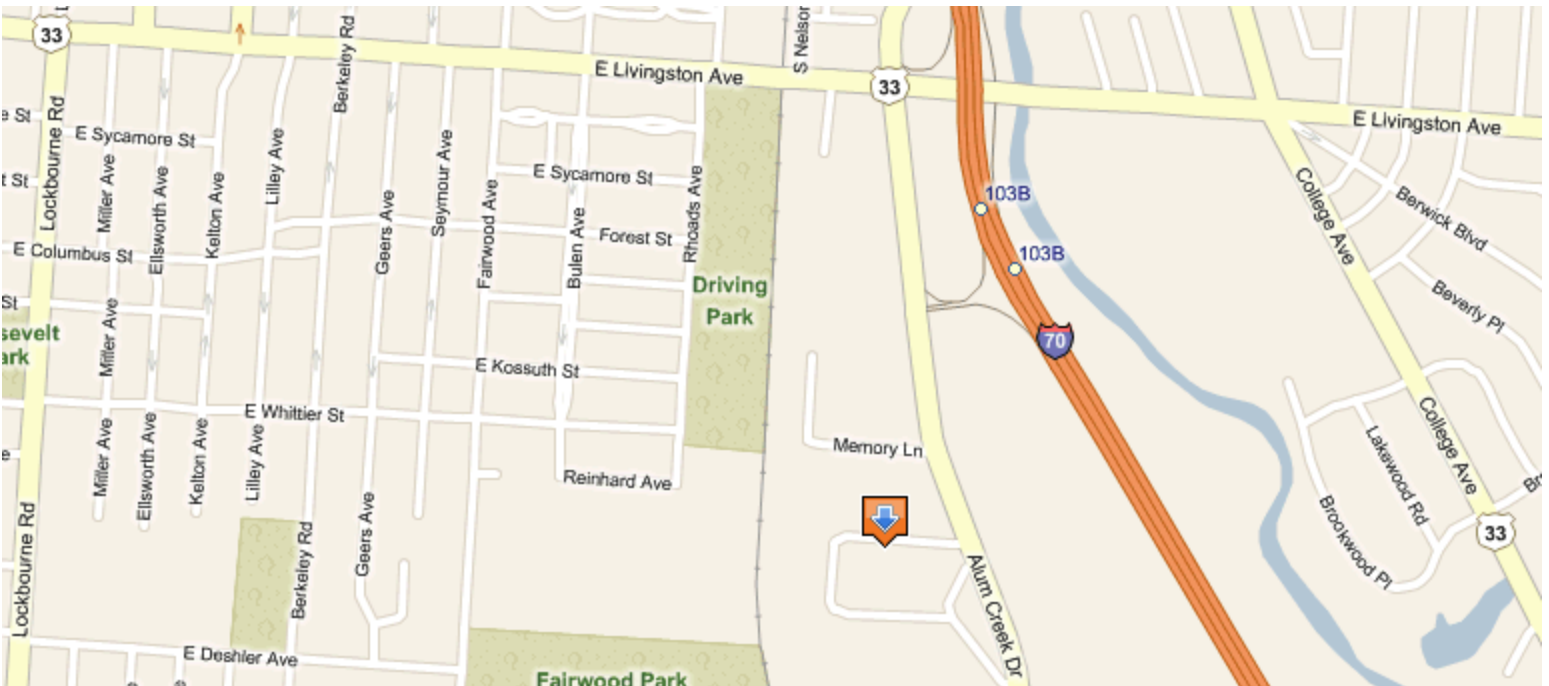
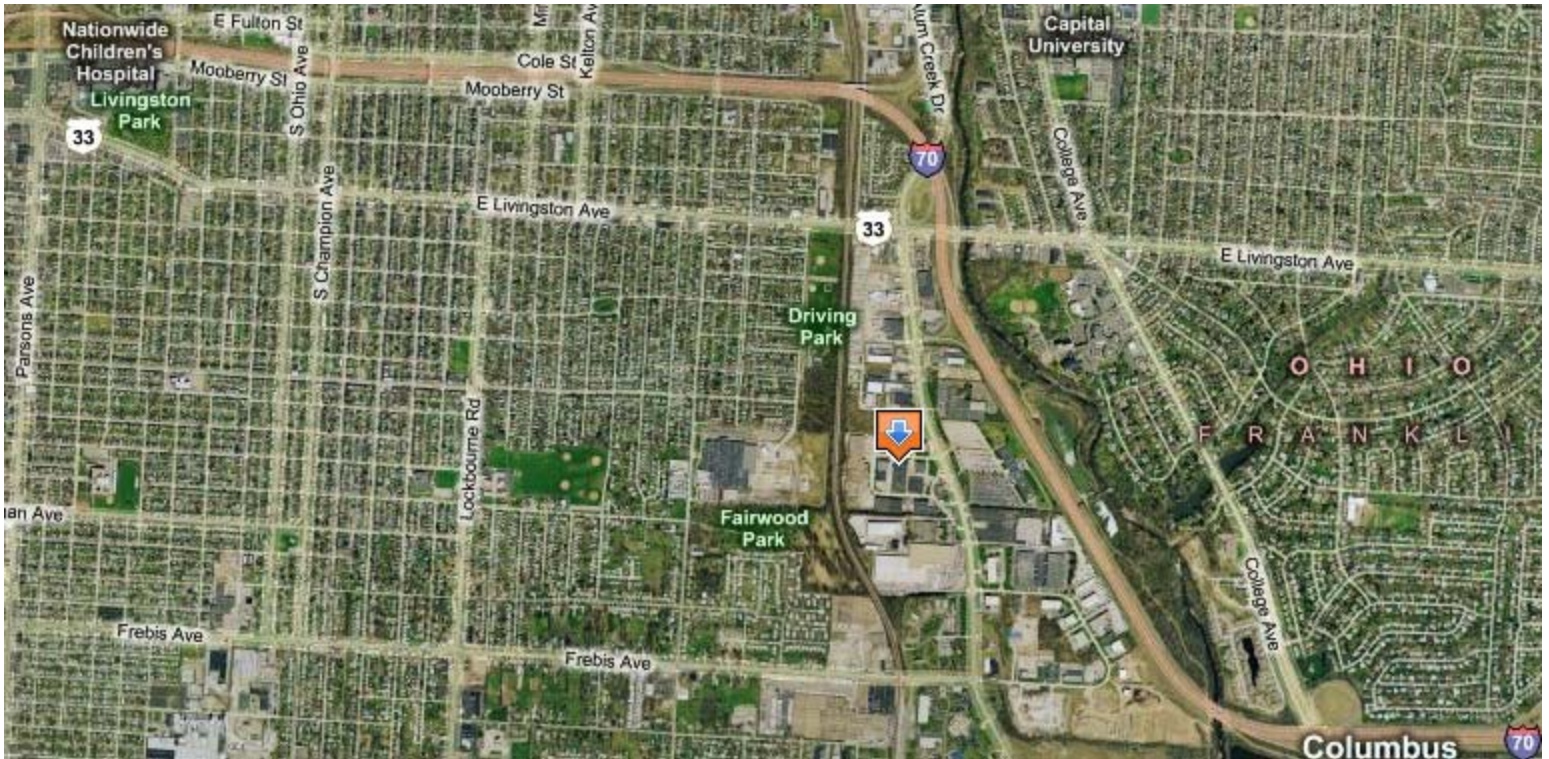
Dan Sheeran | tel 614 629 5216
dsheeran@ohioequities.com

Mike Semon | tel 614 629 5217
mjsemon@ohioequities.com

Ryan McGreevy | tel 614 629 5282
rmcgreevy@ohioequities.com

AERIAL IMAGERY & LOCATION MAP

1513 Alum Creek Drive – Columbus, OH 43209



NAI Ohio Equities REALTORS®

Commercial Real Estate Services, Worldwide.

The information contained herein has been given to us by the owner of the property or other sources we deem reliable. We have no reason to doubt its accuracy, but we do not guarantee it. All information should be verified prior to purchase or lease.

contact information

Dan Sheeran | tel 614 629 5216
dsheeran@ohioequities.com

Mike Semon | tel 614 629 5217
mjsemon@ohioequities.com

Ryan McGreevy | tel 614 629 5282
rmcgreevy@ohioequities.com