



**FOR LEASE**  
**OFFICE / WAREHOUSE SPACE**  
 1240 Refugee Lane – Columbus, OH 43207



**Property Description**

- 33,650 SF BUILDING
- 5,600 SF AVAILABLE (600 SF IS OFFICE SPACE)
- 20' CLEAR HEIGHT
- 3 PHASE ELECTRIC
- ONE DRIVE-IN
- SIX DOCKS
- ZONED INDUSTRIAL-M
- SITUATED ON 10.04 ACRES NEAR THE INTERSECTION OF REFUGEE LANE AND LOCKBOURNE ROAD
- BUILT IN 1970
- 38 PARKING SPACES

**LEASE RATE \$3.25 PSF MG**

**contact information**

**Dan Sheeran** | tel 614 629 5216  
 dsheeran@ohioequities.com

**Mike Semon** | tel 614 629 5217  
 mjsemon@ohioequities.com

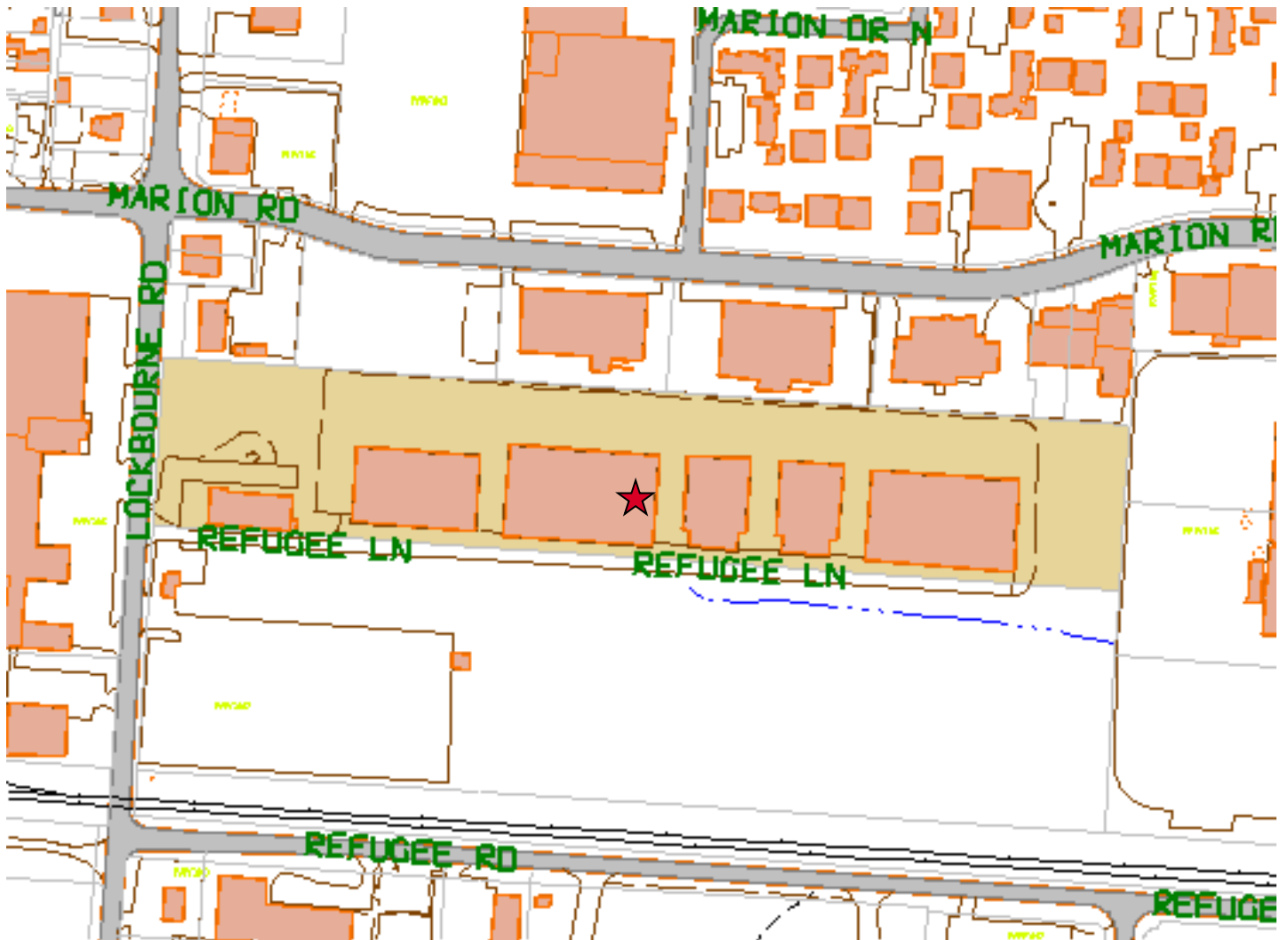


The information contained herein has been given to us by the owner of the property or other sources we deem reliable. We have no reason to doubt its accuracy, but we do not guarantee it. All information should be verified prior to purchase or lease.

**Main Office**  
 605 S Front St Suite 200  
 Columbus, Ohio 43215  
 tel 614 224 2400  
 fax 614 224 5436  
 www.ohioequities.com

# PLAT MAP

1240 Refugee Lane – Columbus, OH 43207



**NAI** Ohio Equities REALTORS®  
Commercial Real Estate Services, Worldwide.

The information contained herein has been given to us by the owner of the property or other sources we deem reliable. We have no reason to doubt its accuracy, but we do not guarantee it. All information should be verified prior to purchase or lease.

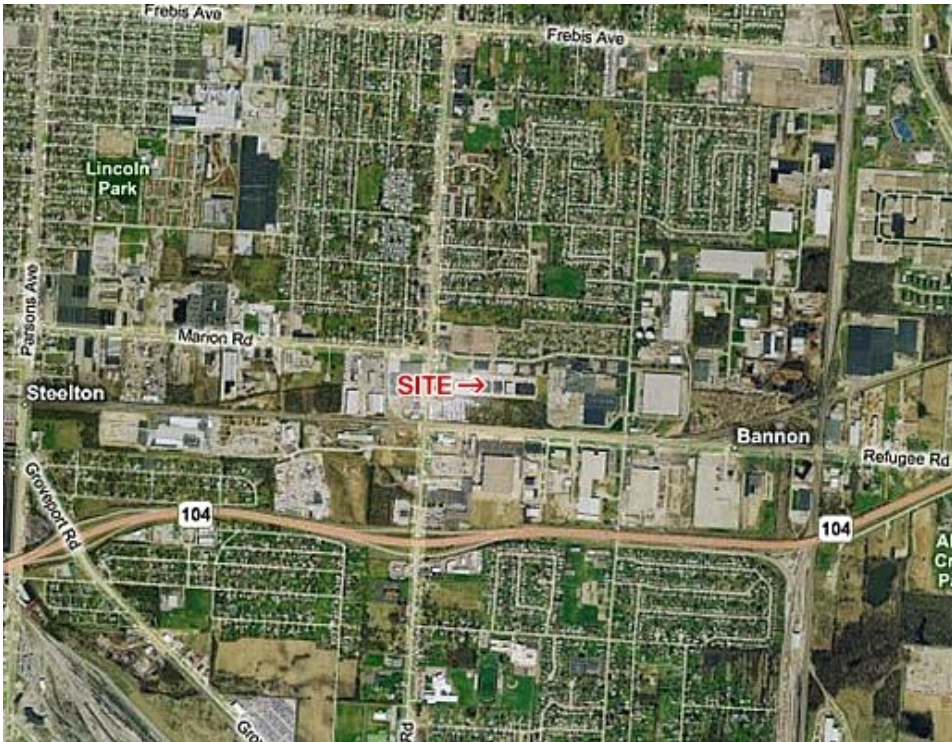
## contact information

Dan Sheeran | tel 614 629 5216  
dsheeran@ohioequities.com

Mike Semon | tel 614 629 5217  
mjsemon@ohioequities.com

# AERIAL IMAGERY & LOCATION MAPS

1240 Refugee Lane – Columbus, OH 43207



**NAI** Ohio Equities<sup>®</sup> REALTORS<sup>®</sup>  
 Commercial Real Estate Services, Worldwide.

**contact information**

Dan Sheeran | tel 614 629 5216  
 dsheeran@ohioequities.com

Mike Semon | tel 614 629 5217  
 mjsemon@ohioequities.com

The information contained herein has been given to us by the owner of the property or other sources we deem reliable. We have no reason to doubt its accuracy, but we do not guarantee it. All information should be verified prior to purchase or lease.