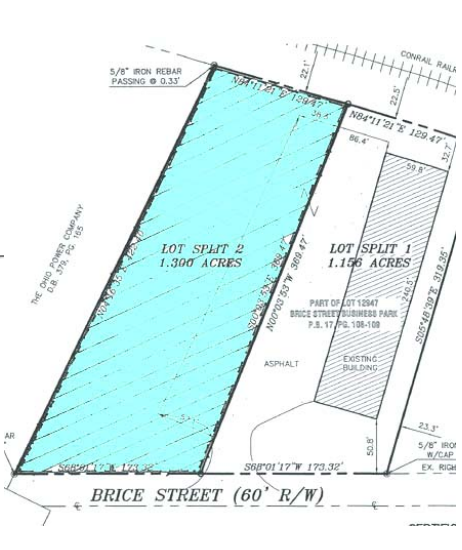




**FOR SALE**  
**VACANT LAND AVAILABLE**  
 950 Brice Street – Newark, OH 43055

- Property Description**
- 1.26 ACRES ZONED B-4
  - BUILDING LOT
  - PARCEL #200-1061200-20840
  - PUBLIC UTILITIES
  - EASY ACCESS TO MAJOR HIGHWAYS
  - LOCATED NEAR THE INTERSECTION OF BRICE STREET AND O'BANNON AVENUE IN LICKING COUNTY
  - LISTING PRICE \$150,000



The information contained herein has been given to us by the owner of the property or other sources we deem reliable. We have no reason to doubt its accuracy, but we do not guarantee it. All information should be verified prior to purchase or lease.

**contact information**

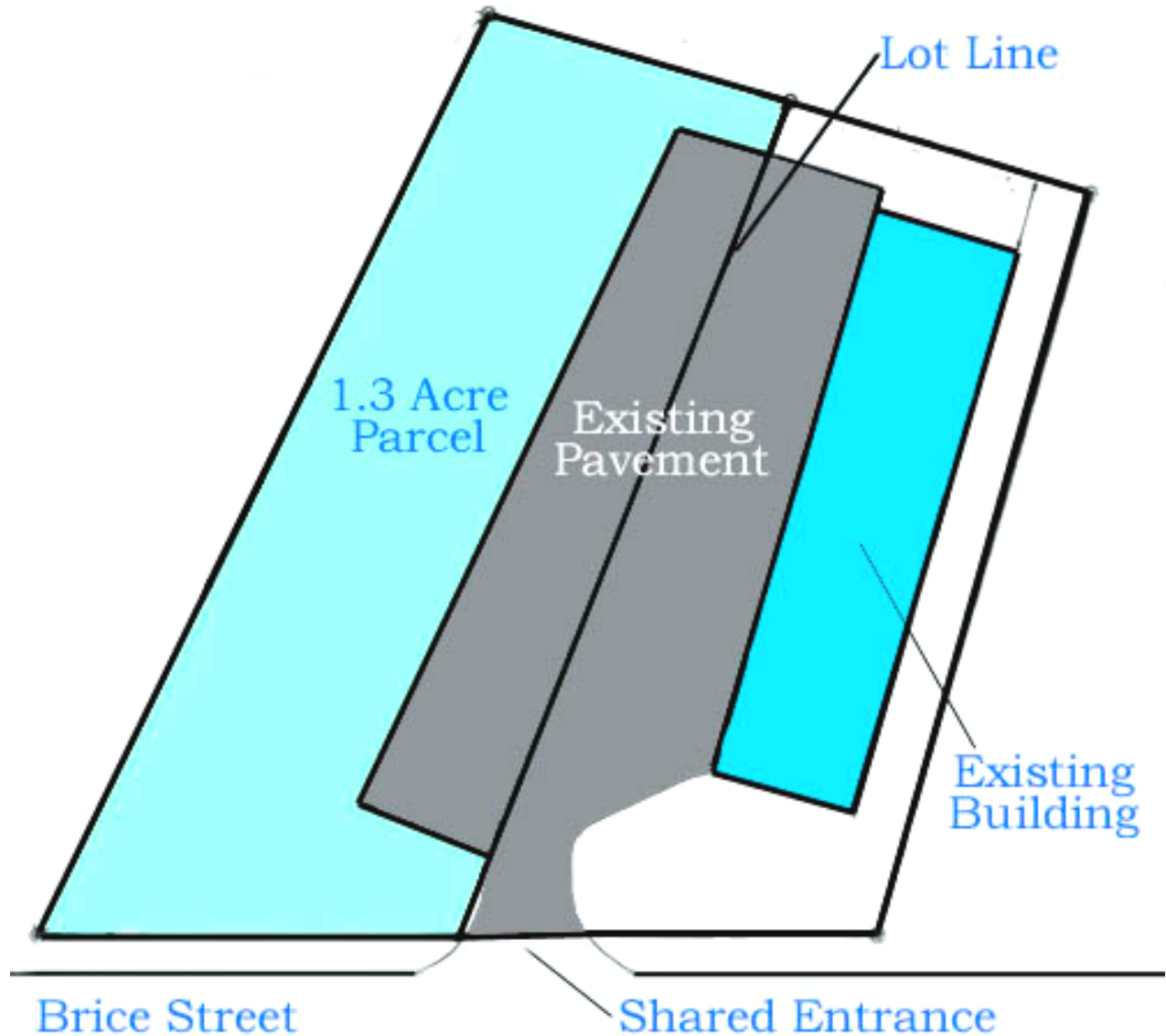
**Dave Anderson (Owner/Agent)**  
 tel 740 349 7844 ext. 23  
 danderson@ohioequities.com

**Steve Layman**  
 tel 740 349 7844 ext. 22  
 slayman@ohioequities.com

**Main Office**  
 605 S Front St Suite 200  
 Columbus, Ohio 43215  
 tel 614 224 2400  
 fax 614 224 5436  
 www.ohioequities.com

# AERIAL IMAGERY & LOCATION MAPS

4355 Williams Road – Groveport, OH 43125



## contact information

**Dave Anderson (Owner/Agent)**

tel 740 349 7844 ext. 23

danderson@ohioequities.com

**Steve Layman**

tel 740 349 7844 ext. 22

slayman@ohioequities.com

**Main Office**

605 S Front St Suite 200

Columbus, Ohio 43215

tel 614 224 2400

fax 614 224 5436

www.ohioequities.com



The information contained herein has been given to us by the owner of the property or other sources we deem reliable. We have no reason to doubt its accuracy, but we do not guarantee it. All information should be verified prior to purchase or lease.