



FOR SUBLEASE INDUSTRIAL/WAREHOUSE

7280 E-J Alum Creek Drive – Columbus, OH 43217



PROPERTY DESCRIPTION

- 57,600 TOTAL SF BUILDING
- 28,800 SF AVAILABLE
- 10 – 10' X 10' DOCKS
- 2 – 12' X 12' DRIVE-INS
- 40' X 40' COLUMN SPACING
- 1,360 SF OFFICE SPACE
- 22' – 24' CLEAR HEIGHT
- 3 PHASE | 240V | 225 AMPS

SUBLEASE RATE \$4.25 PSF GROSS

contact information

Curt Berlin SIOR | tel 614 629 5221
cberlin@ohioequities.com

Matt Osowski | tel 614 629 5229
mosowski@ohioequities.com

Main Office

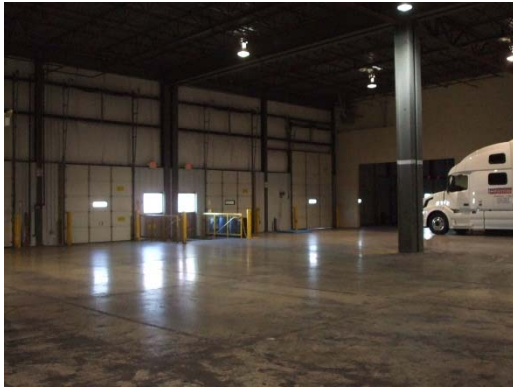
605 S Front St Suite 200
Columbus, Ohio 43215
tel 614 224 2400 | fax 614 224 5436
www.ohioequities.com

NAI Ohio Equities REALTORS®
Commercial Real Estate Services, Worldwide.

The information contained herein has been given to us by the owner of the property or other sources we deem reliable. We have no reason to doubt its accuracy, but we do not guarantee it. All information should be verified prior to purchase or lease.

PROPERTY PHOTOGRAPHS

7280 E-J Alum Creek Drive – Columbus, OH 43217



NAI Ohio Equities^{REALTORS®}
Commercial Real Estate Services, Worldwide.

The information contained herein has been given to us by the owner of the property or other sources we deem reliable. We have no reason to doubt its accuracy, but we do not guarantee it. All information should be verified prior to purchase or lease.

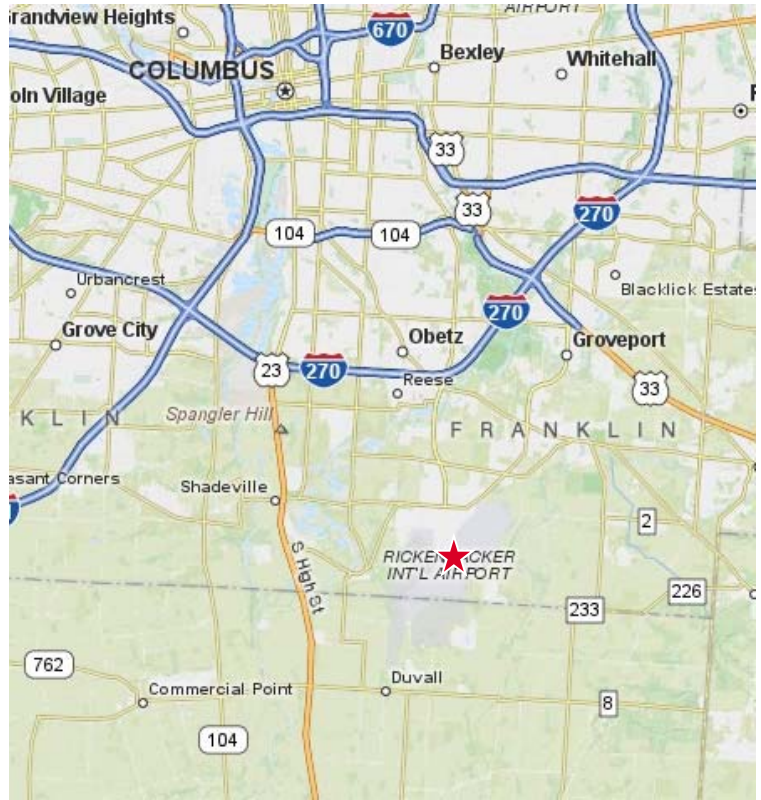
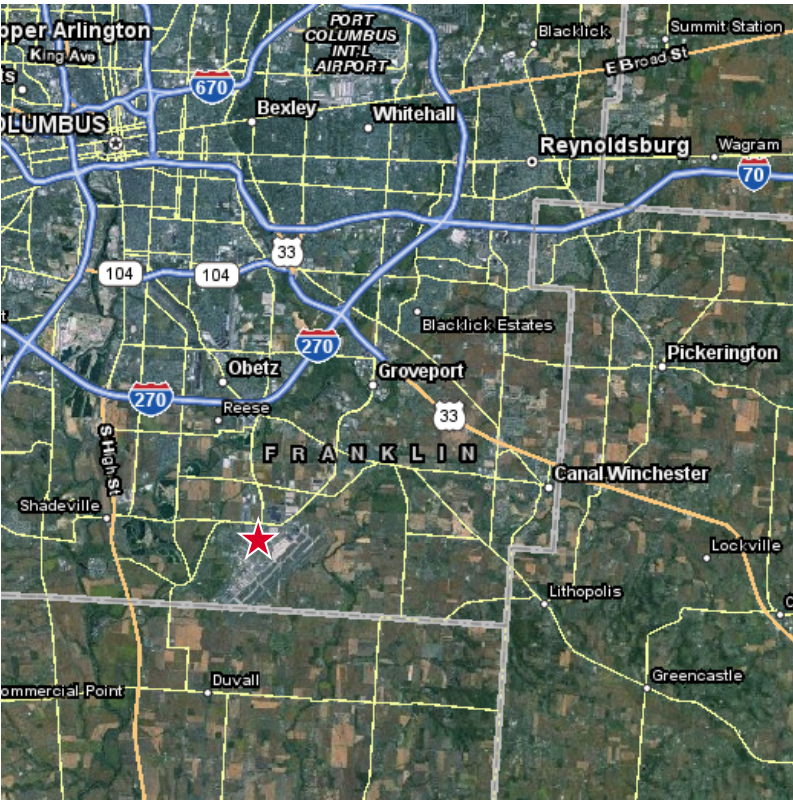
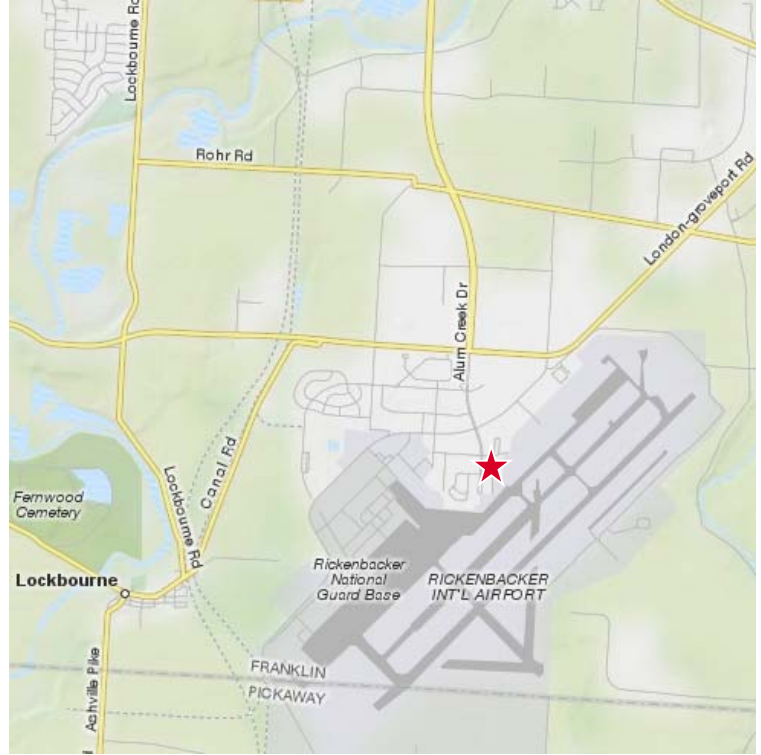
contact information

Curt Berlin SIOR | tel 614 629 5221
cberlin@ohioequities.com

Matt Osowski | tel 614 629 5229
mosowski@ohioequities.com

AERIAL IMAGERY & LOCATION MAPS

7280 E-J Alum Creek Drive – Columbus, OH 43217



NAI Ohio Equities REALTORS®
Commercial Real Estate Services, Worldwide.

The information contained herein has been given to us by the owner of the property or other sources we deem reliable. We have no reason to doubt its accuracy, but we do not guarantee it. All information should be verified prior to purchase or lease.

contact information

Curt Berlin SIOR | tel 614 629 5221
cberlin@ohioequities.com

Matt Osowski | tel 614 629 5229
mosowski@ohioequities.com