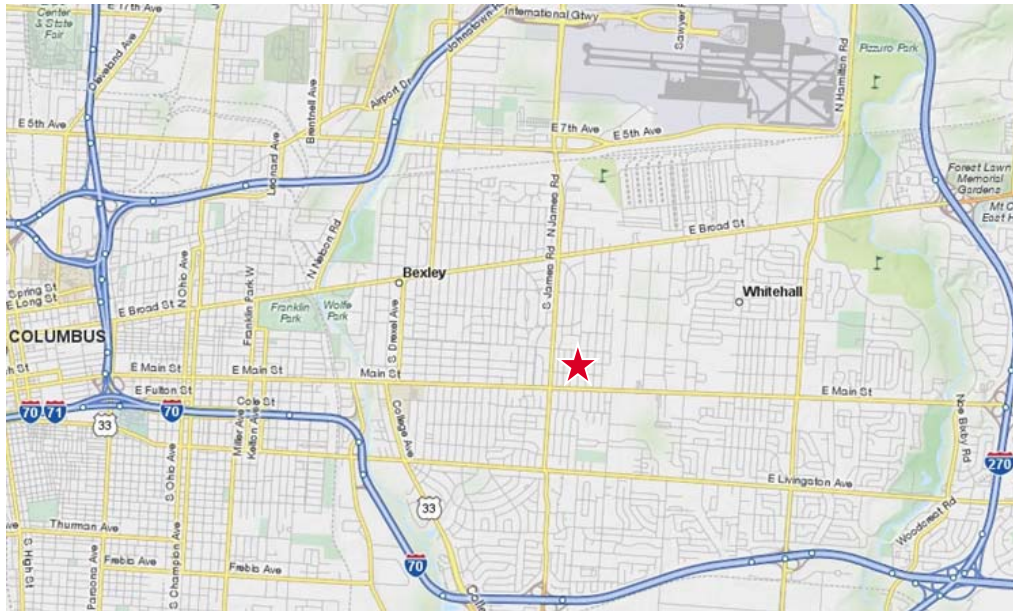




FOR LEASE

# OFFICE SPACE AVAILABLE

3242-3280 E. Main Street – Columbus, OH 43213



## PROPERTY DESCRIPTION

- 18,044 SF OFFICE BUILDING
  - SUITE 1 (FIRST FLR) - 1,508 SF
  - SUITE 2 (SECOND FLR) - 3,468 SF
  - AFFORDABLE OFFICE SPACE
  - NEAR INTERSECTION OF E. MAIN STREET AND JAMES ROAD
  - BUILDING HAS BUS STOP AND ABUNDANT FREE PARKING
  - TENANT PAYS UTILITIES AND JANITORIAL
  - OWNER MAY CONSIDER DIVIDING
- LEASE RATE \$8.00-\$10.00 PSF MG**

### contact information

Bob Monahan | tel 614 629 5222  
bmonahan@ohioequities.com

### Main Office

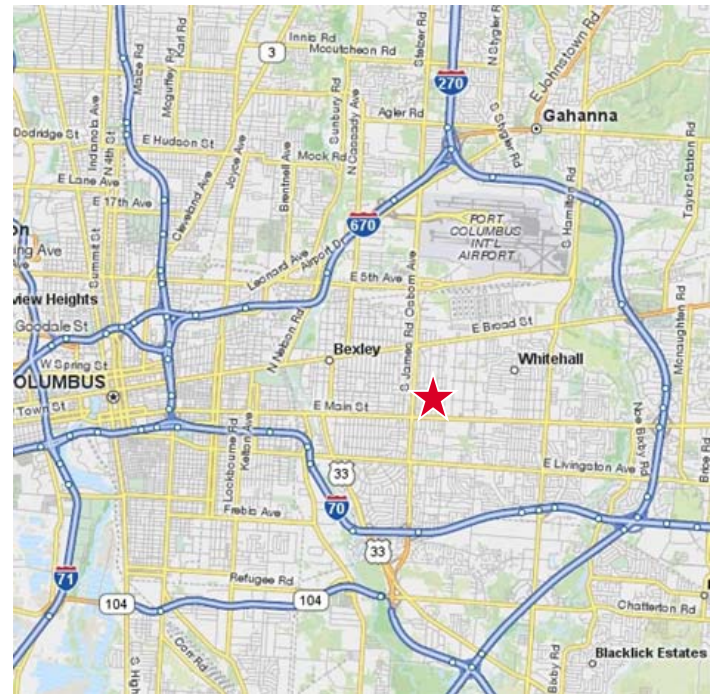
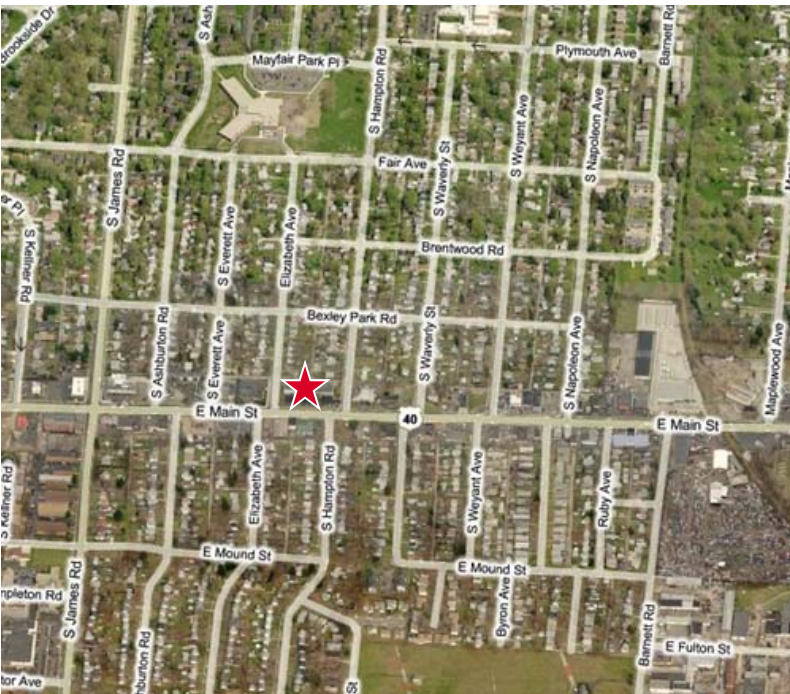
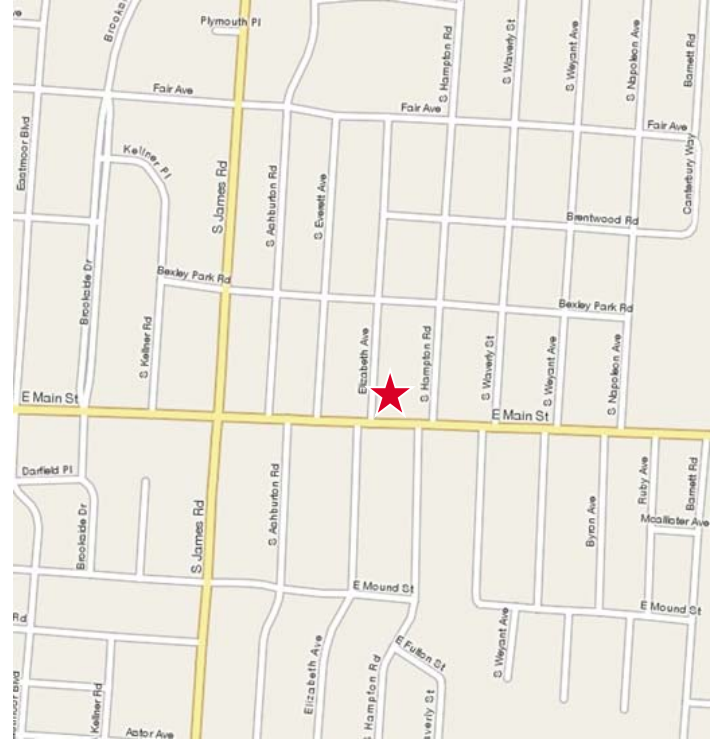
605 S Front St Suite 200  
Columbus, Ohio 43215  
tel 614 224 2400 | fax 614 224 5436  
www.ohioequities.com

**NAI** Ohio Equities<sup>®</sup> REALTORS<sup>®</sup>  
Commercial Real Estate Services, Worldwide.

The information contained herein has been given to us by the owner of the property or other sources we deem reliable. We have no reason to doubt its accuracy, but we do not guarantee it. All information should be verified prior to purchase or lease.

# AERIAL IMAGERY & LOCATION MAPS

3242-3280 E. Main Street – Columbus, OH 43213



**NAI** Ohio Equities<sup>REALTORS</sup><sup>®</sup>

Commercial Real Estate Services, Worldwide.

The information contained herein has been given to us by the owner of the property or other sources we deem reliable. We have no reason to doubt its accuracy, but we do not guarantee it. All information should be verified prior to purchase or lease.

contact information

Bob Monahan | tel 614 629 5222  
bmonahan@ohioequities.com