



WOODWARD PARK SPACE FOR LEASE

RETAIL SPACE AVAILABLE

1230-1274 Morse Road – Columbus, OH 43229



PROPERTY DESCRIPTION

- 43,500 SF RETAIL STRIP CTR. – CLOSE TO I-71
- ANCHORED BY SAVE-A-LOT GROCERY STORE; OTHER TENANTS INCLUDE FAMILY DOLLAR AND MCDONALD'S
- 3,000 SF SPACE WITH 800 SF BONUS ROOM
- DENSELY POPULATED AREA: 131,000 PEOPLE IN 3 MILE RADIUS
- HIGH VOLUME TRAFFIC COUNTS: 42,000 CARS PER DAY ON MORSE ROAD
- EXCELLENT VISIBILITY, EASY ACCESS AND OUTSTANDING SIGNAGE

LEASE RATE \$12.00 PSF

contact information

Bob Monahan | tel 614 629 5222
 bmonahan@ohioequities.com

Main Office

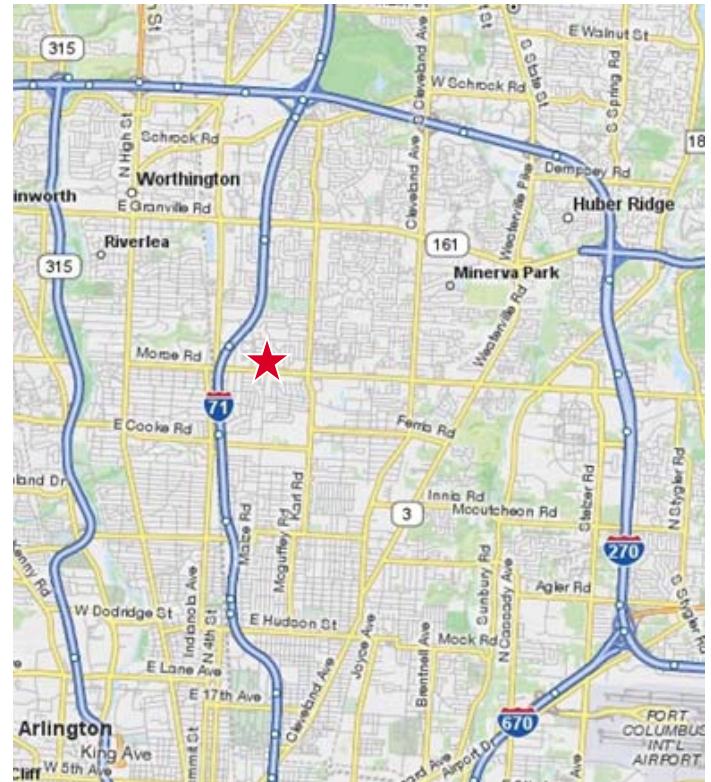
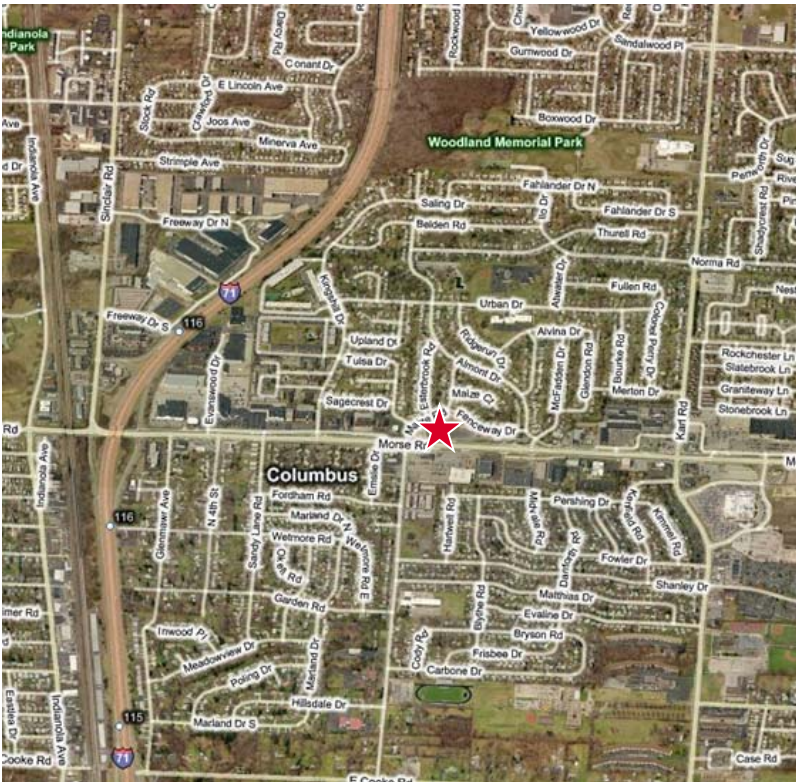
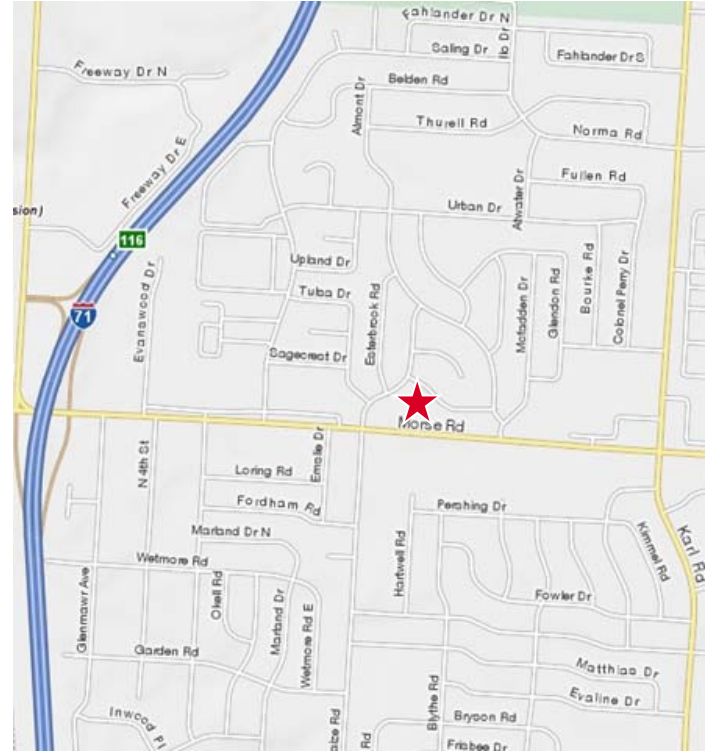
605 S Front St Suite 200
 Columbus, Ohio 43215
 tel 614 224 2400 | fax 614 224 5436
 www.ohioequities.com



The information contained herein has been given to us by the owner of the property or other sources we deem reliable. We have no reason to doubt its accuracy, but we do not guarantee it. All information should be verified prior to purchase or lease.

AERIAL IMAGERY & LOCATION MAPS

1230-1274 Morse Road – Columbus, OH 43229



NAI Ohio Equities[®] REALTORS[®]
Commercial Real Estate Services, Worldwide.

The information contained herein has been given to us by the owner of the property or other sources we deem reliable. We have no reason to doubt its accuracy, but we do not guarantee it. All information should be verified prior to purchase or lease.

contact information

Bob Monahan | tel 614 629 5222
bmonahan@ohioequities.com