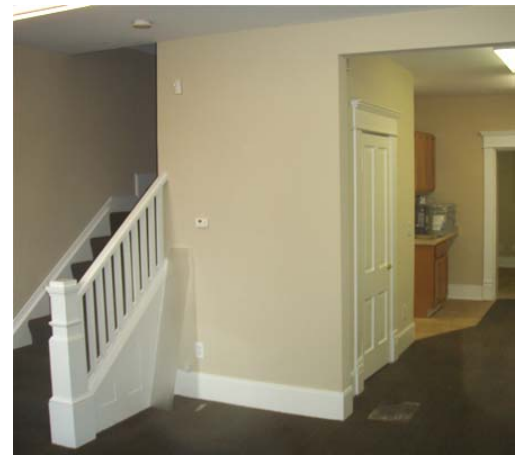


FOR SALE – GERMAN VILLAGE OFFICE AND DWELLING

325 E. Livingston Avenue – Columbus, OH 43215



PRICE REDUCED!!!



PROPERTY OVERVIEW

- TWO BUILDINGS TOTALING 1,979 SF
- GERMAN VILLAGE OFFICE PROPERTY FOR SALE
- PRIVATE PARKING LOT
- PRE-WIRED FOR NETWORK SET-UP
- GREAT SIGNAGE ON E. LIVINGSTON

BUILDING A

- 1,152 SF
- 1ST FLOOR – OPEN OFFICE SPACE WITH PRIVATE RESTROOM AND KITCHENETTE
- 2ND FLOOR – HALF OPEN OFFICE SPACE WITH A PRIVATE OFFICE AND RESTROOM

BUILDING B

- 827 SF
- 1ST FLOOR – OPEN OFFICE SPACE WITH PRIVATE RESTROOM AND KITCHENETTE
- 2ND FLOOR – LOFT AREA PERFECT FOR STORAGE

LISTING PRICE \$149,000

contact information:

Andy Dutcher | tel 614 629 5266
adutcher@ohioequities.com

Dan Sheeran | tel 614 629 5216
dsheeran@ohioequities.com

Mike Semon | tel 614 629 5217
mjsemon@ohioequities.com

Main Office

605 S Front St Suite 200
Columbus, Ohio 43215
tel 614 224 2400 | fax 614 224 5436
www.ohioequities.com

NAI Ohio Equities REALTORS®

Commercial Real Estate Services, Worldwide.

The information contained herein has been given to us by the owner of the property or other sources we deem reliable. We have no reason to doubt its accuracy, but we do not guarantee it. All information should be verified prior to purchase or lease.

PROPERTY PHOTOGRAPHS

325 E. Livingston Avenue – Columbus, OH 43215



NAI Ohio Equities REALTORS®
Commercial Real Estate Services, Worldwide.

The information contained herein has been given to us by the owner of the property or other sources we deem reliable. We have no reason to doubt its accuracy, but we do not guarantee it. All information should be verified prior to purchase or lease.

contact information

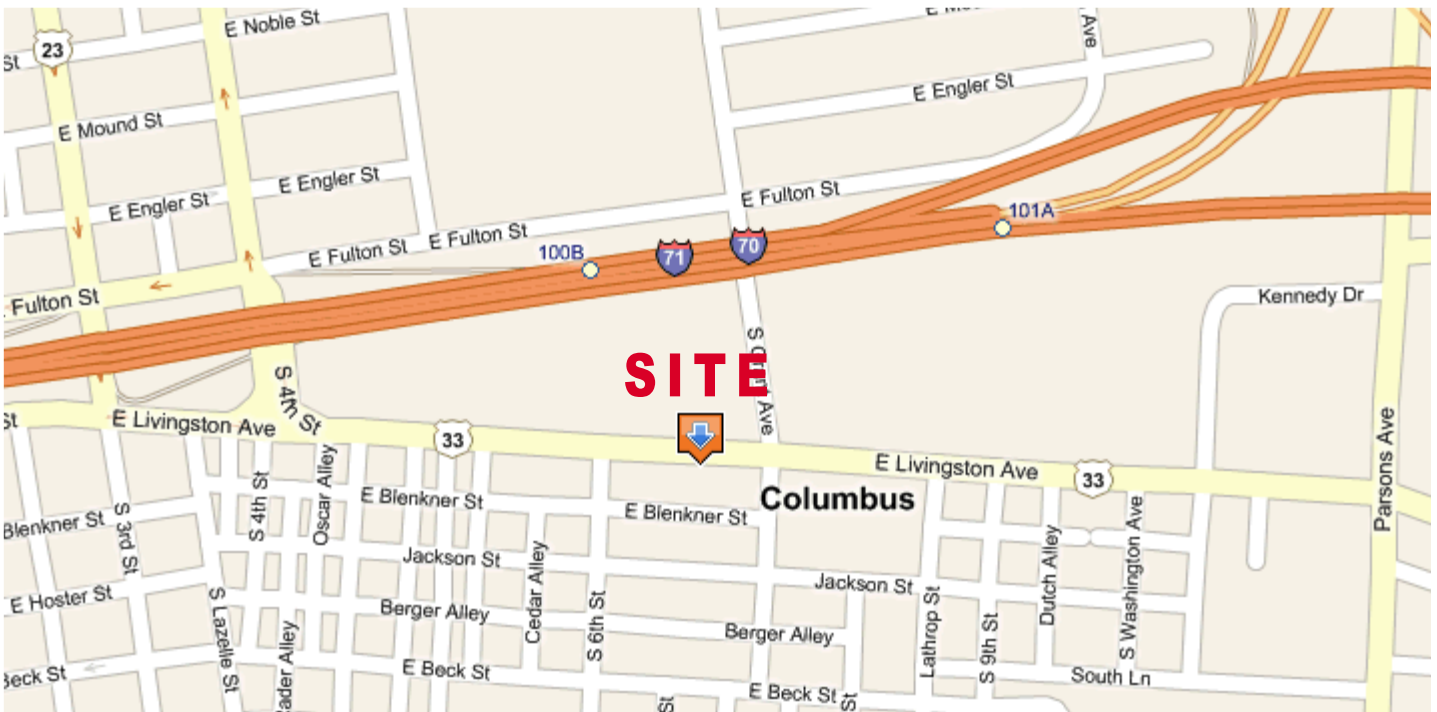
Andy Dutcher | tel 614 629 5266
adutcher@ohioequities.com

Dan Sheeran | tel 614 629 5216
dsheeran@ohioequities.com

Mike Semon | tel 614 629 5217
mjsemon@ohioequities.com

AERIAL IMAGERY & LOCATION MAP

325 E. Livingston Avenue – Columbus, OH 43215



Commercial Real Estate Services, Worldwide.

The information contained herein has been given to us by the owner of the property or other sources we deem reliable. We have no reason to doubt its accuracy, but we do not guarantee it. All information should be verified prior to purchase or lease.

contact information

Andy Dutcher | tel 614 629 5266
adutcher@ohioequities.com

Dan Sheeran | tel 614 629 5216
dsheeran@ohioequities.com

Mike Semon | tel 614 629 5217
mjsemon@ohioequities.com